

# Earnings, Health Outcomes and the Role of Minimum Wages in the U.S.

Focusing on the Future of Work: Connections to Health  
Sharing Knowledge Conference  
P4A

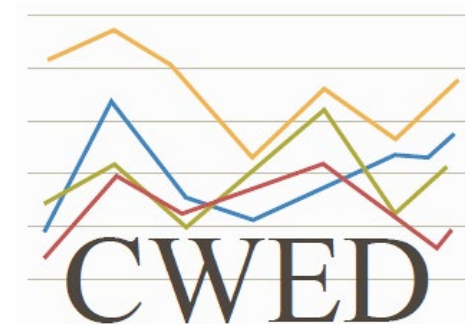
March 9, 2018  
Chandler, Arizona

Sylvia A. Allegretto, PhD

 @Sly21

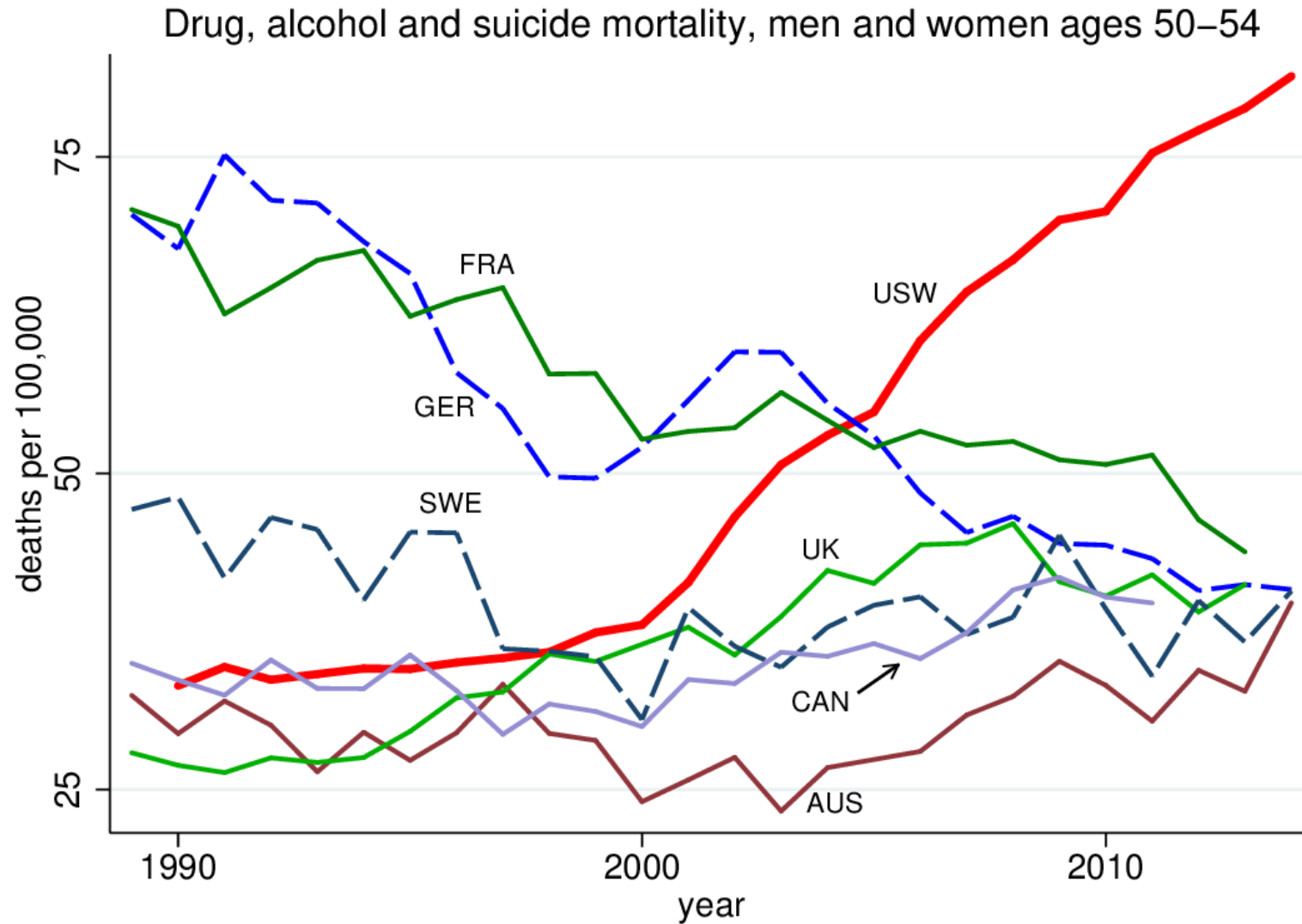
Co-Chair, Center on Wage & Employment Dynamics

University of California, Berkeley



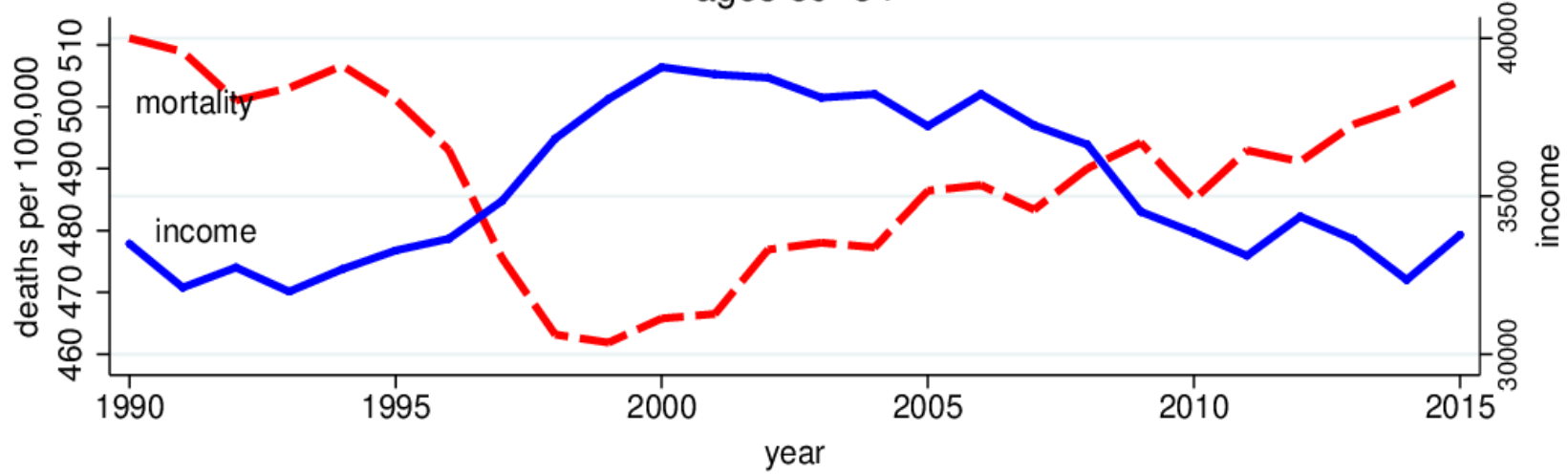
Motivation:  
Health Outcomes and Income

# Case & Deaton paper



# Median household income per member (2015\$) and mortality

## ages 50–54



## ages 65–69

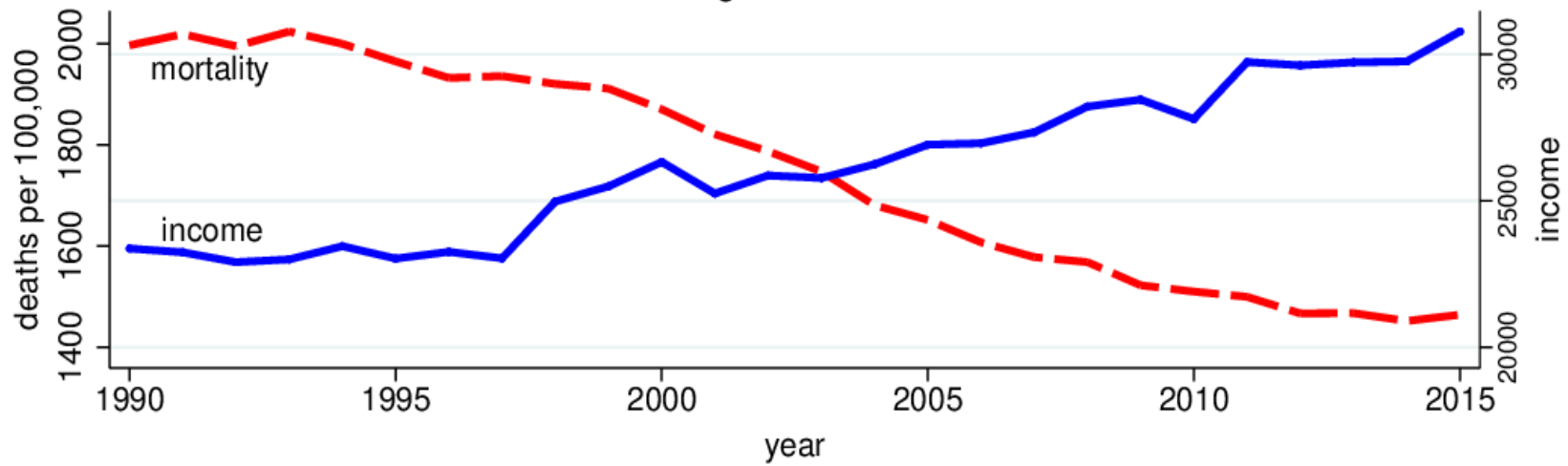
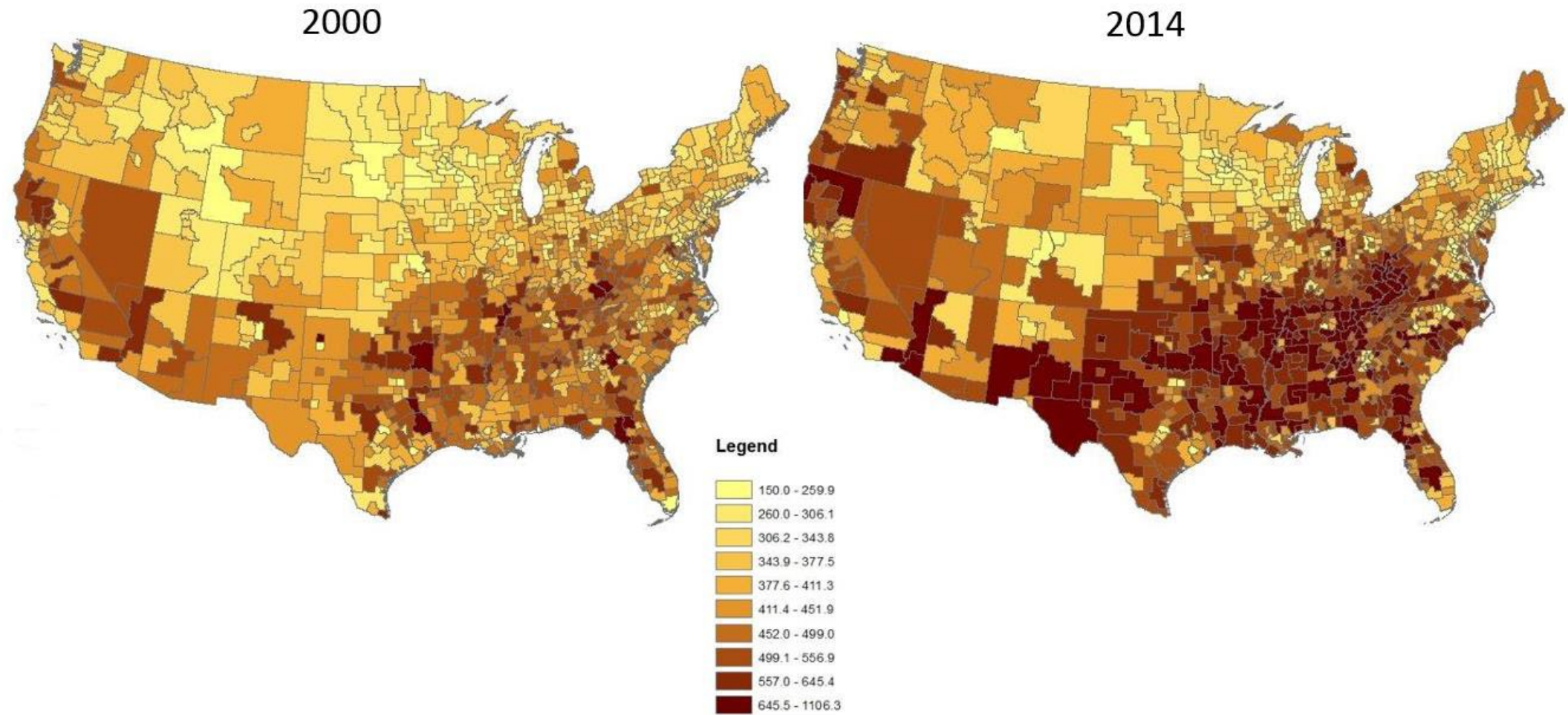
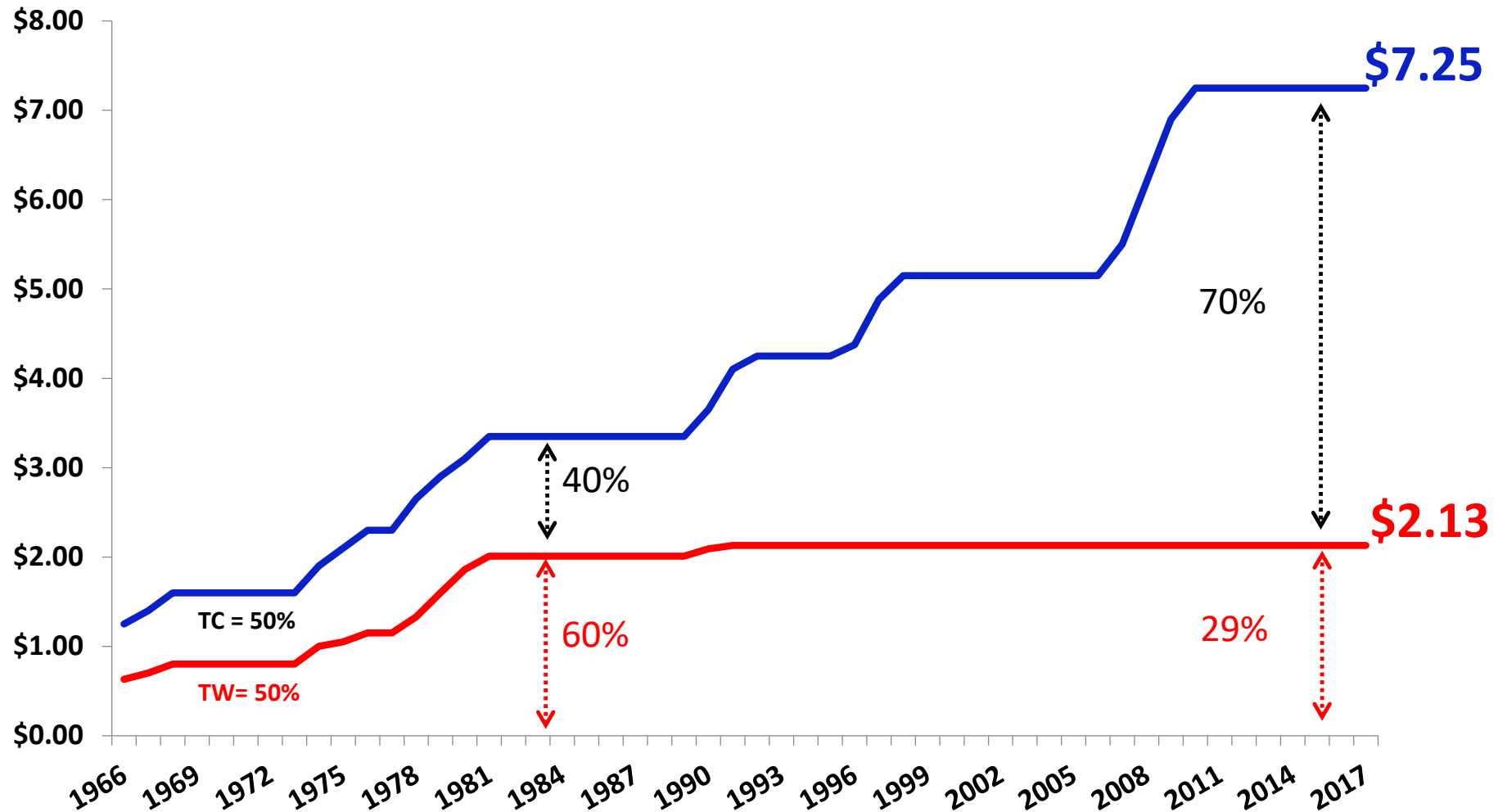


Figure 1.9 All-cause mortality, white non-Hispanics, ages 45-54

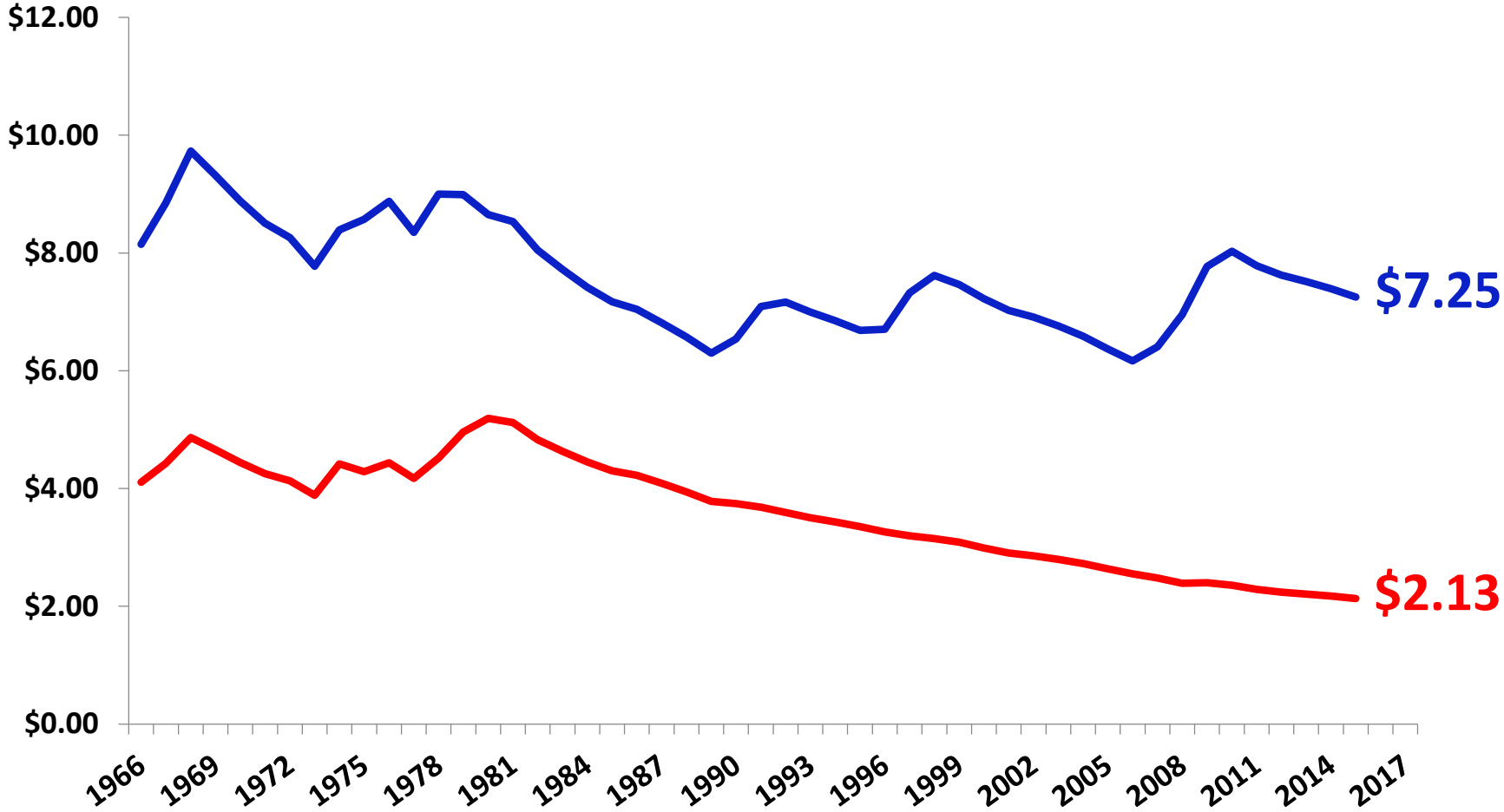


Background:  
Wage Floors in the U.S.

# 1966 FLSA & the Two-tiered System

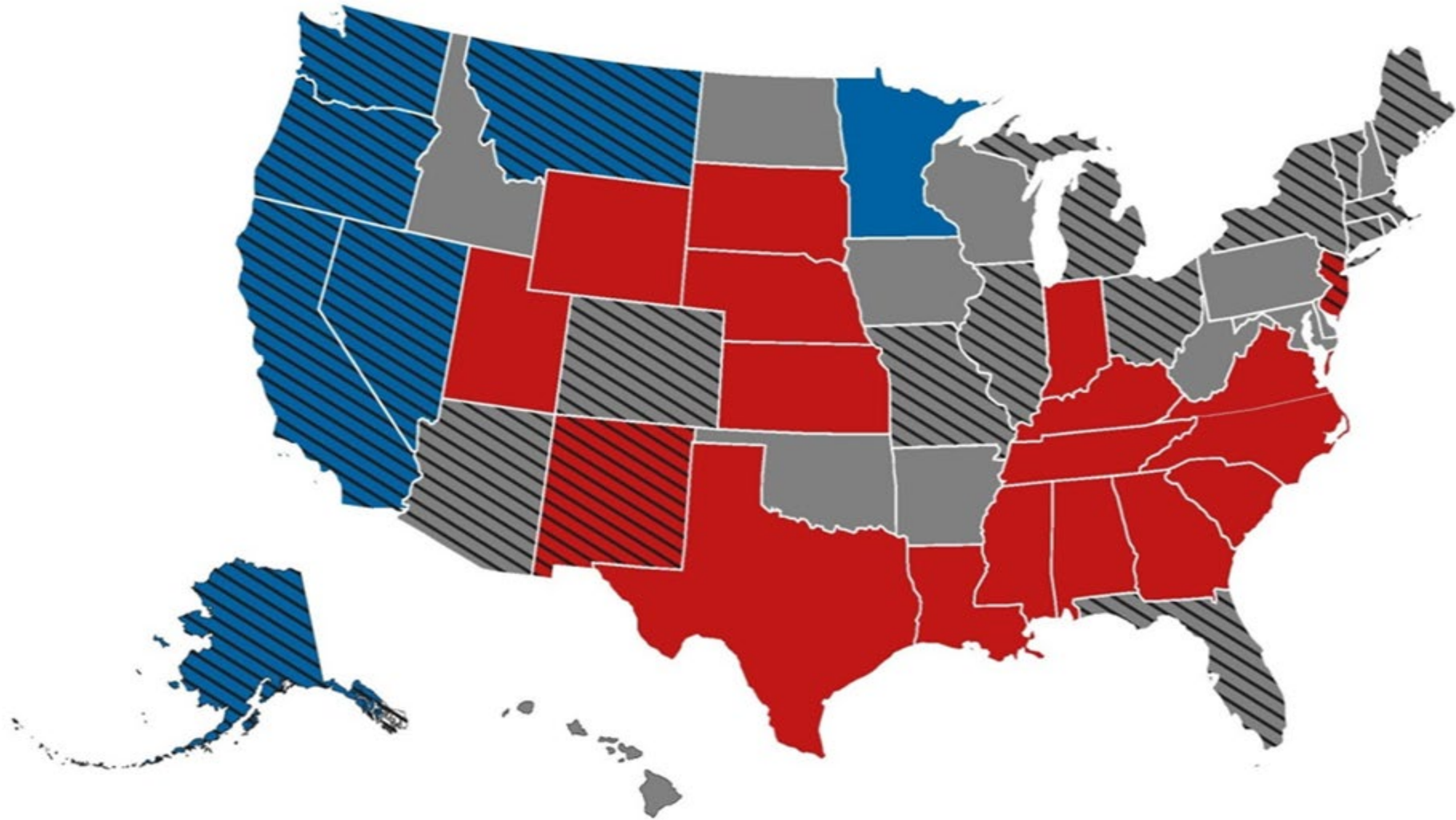


# After adjusting for prices



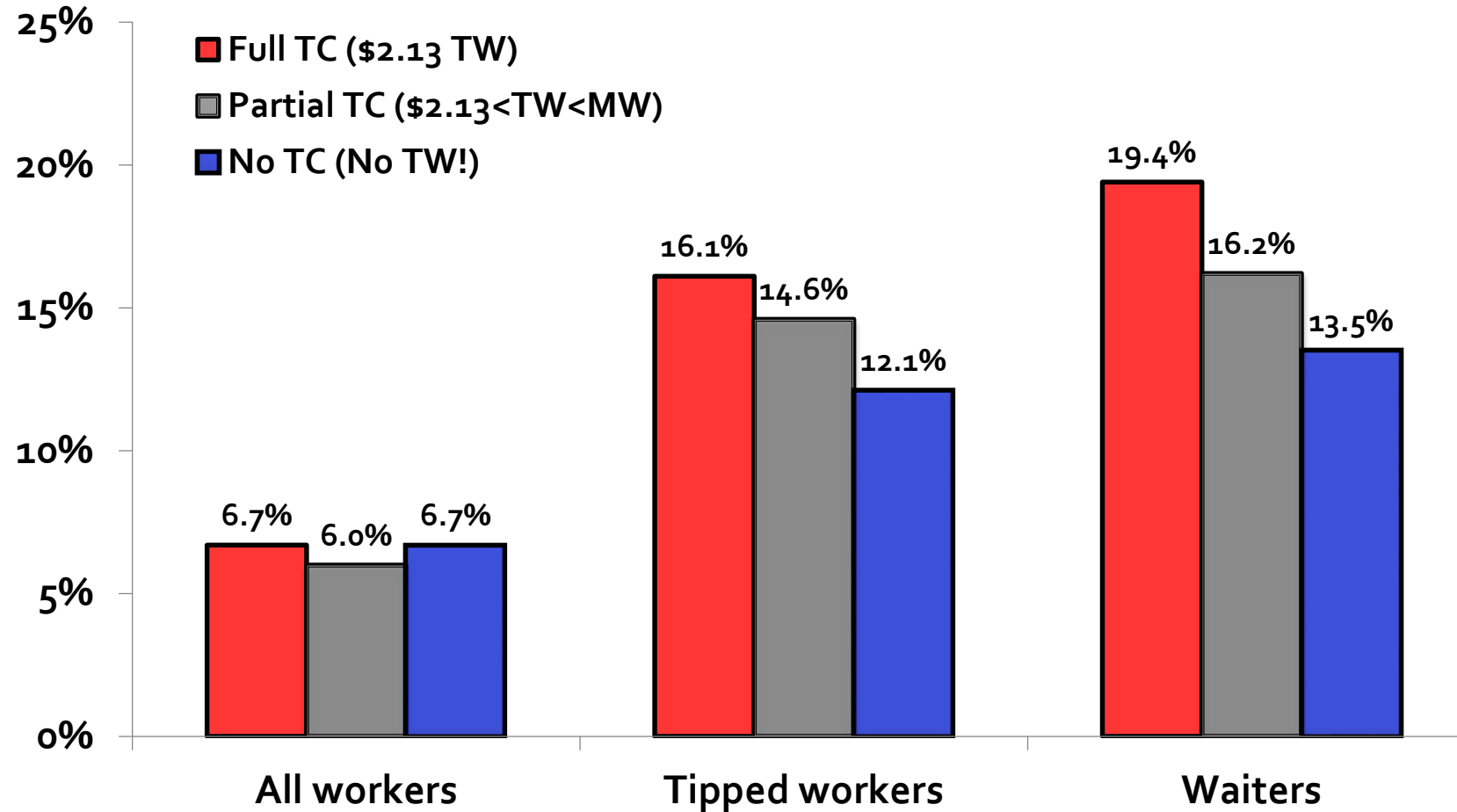


# Quasi-natural experiment



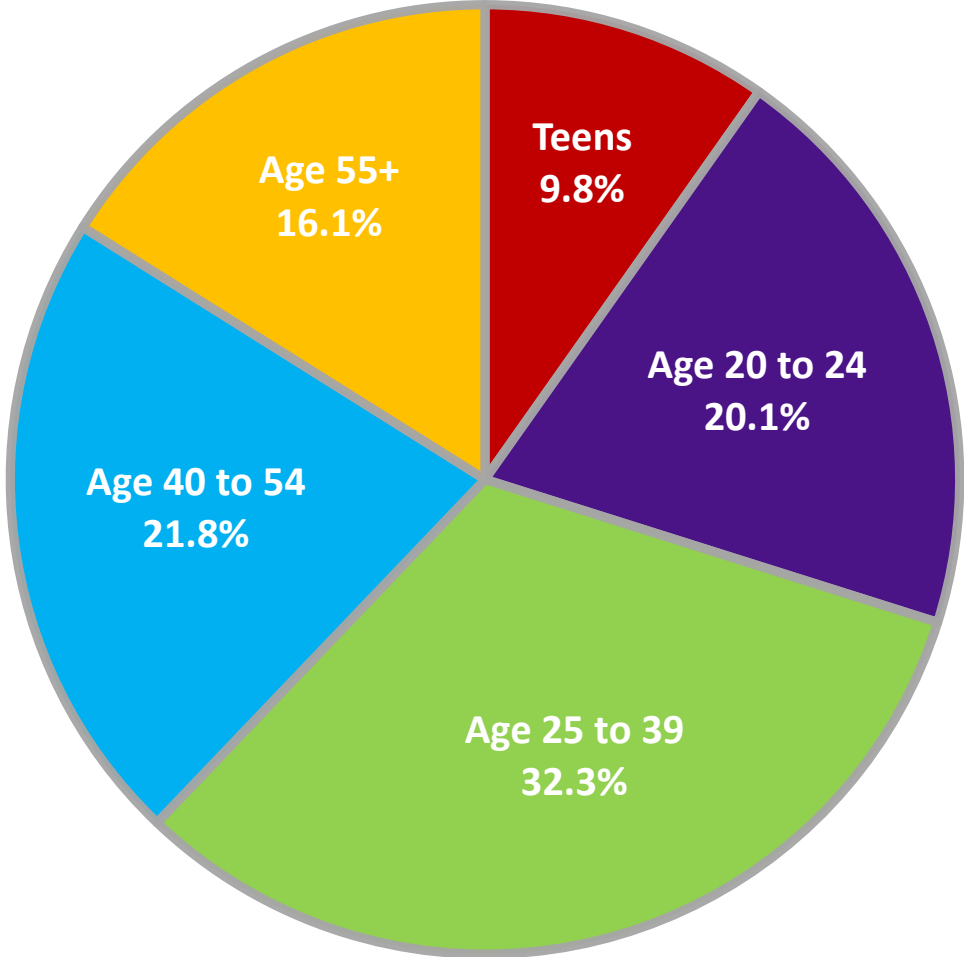
Backdrop:  
Economic Conditions in the U.S.

# Poverty rates





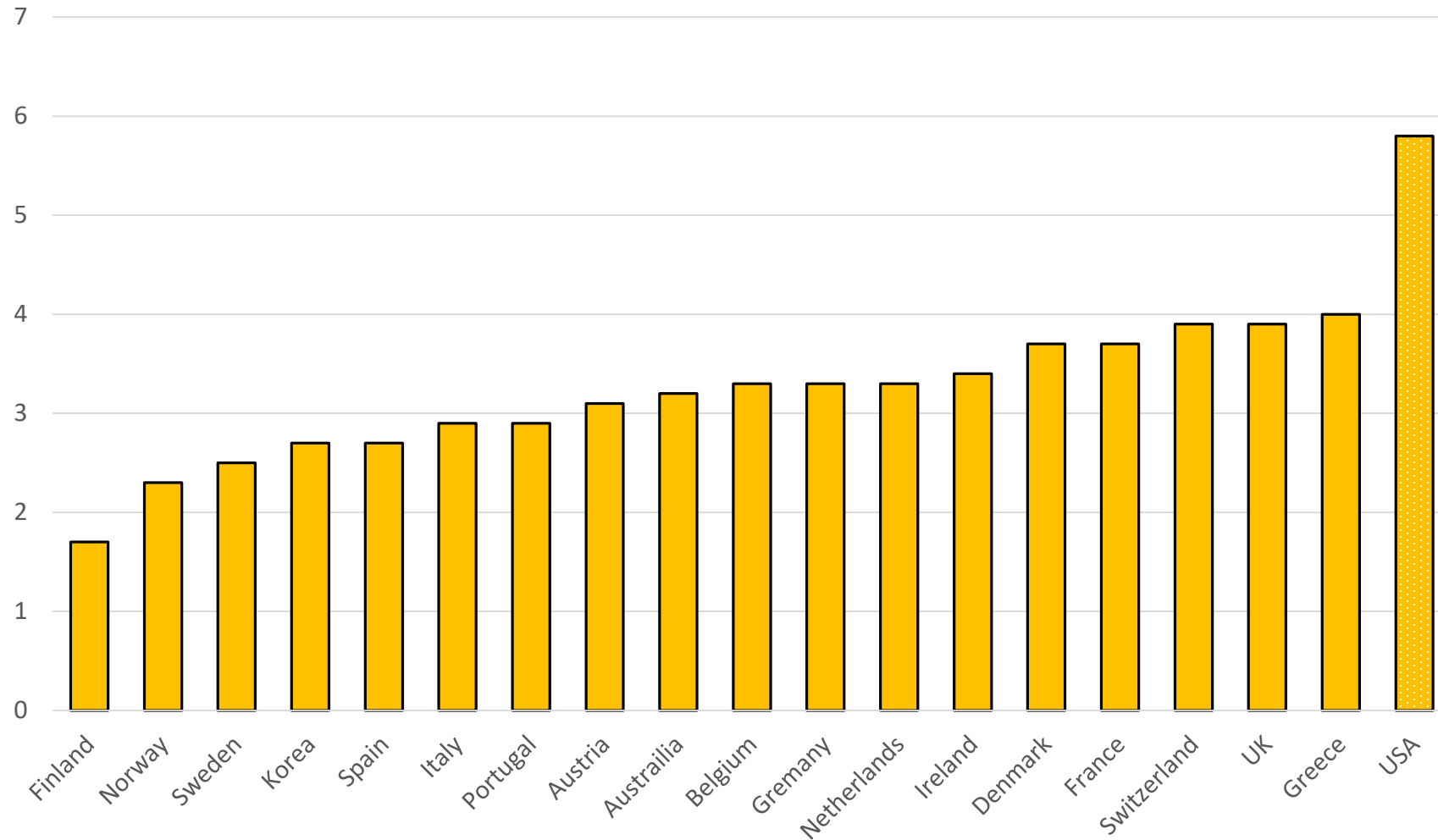
# MW Policy in the U.S. to \$15



Source: David Cooper, Economic Policy Institute, Briefing Paper April 2017.

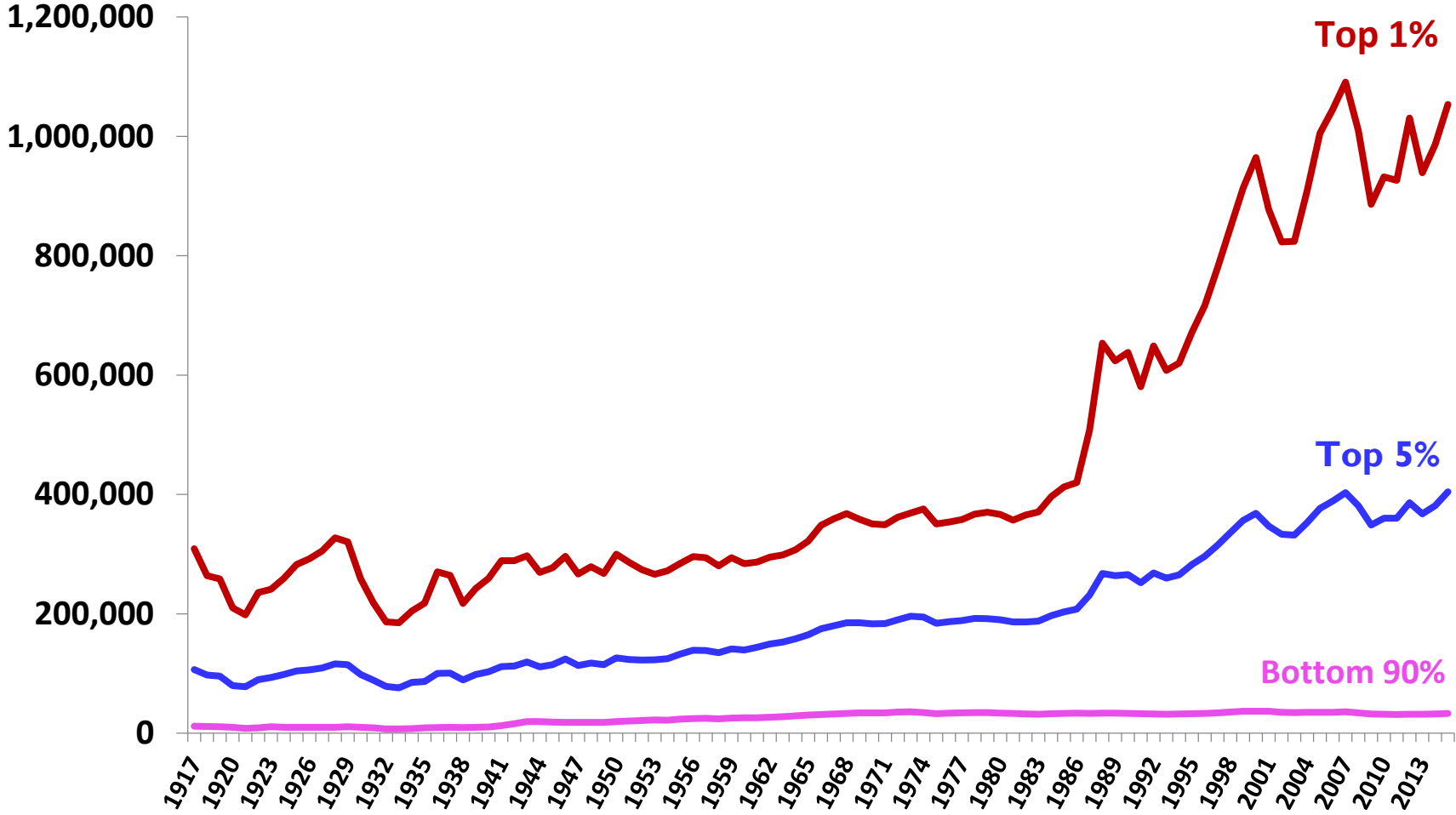


# Infant mortality



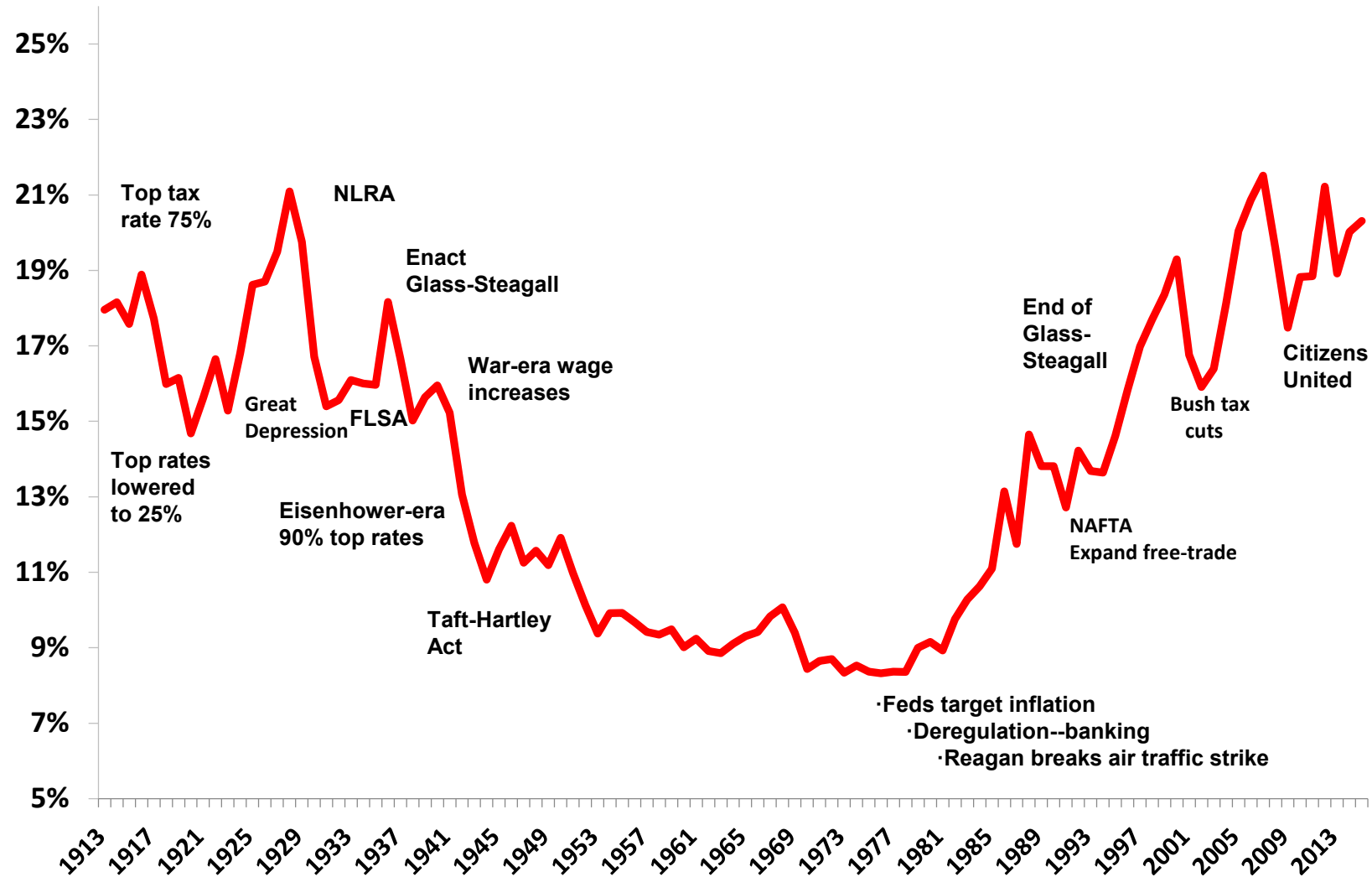
Source: Allegretto's analysis of OECD data, 2015. Per 1,000 live births.

# A stark visual of growing inequality

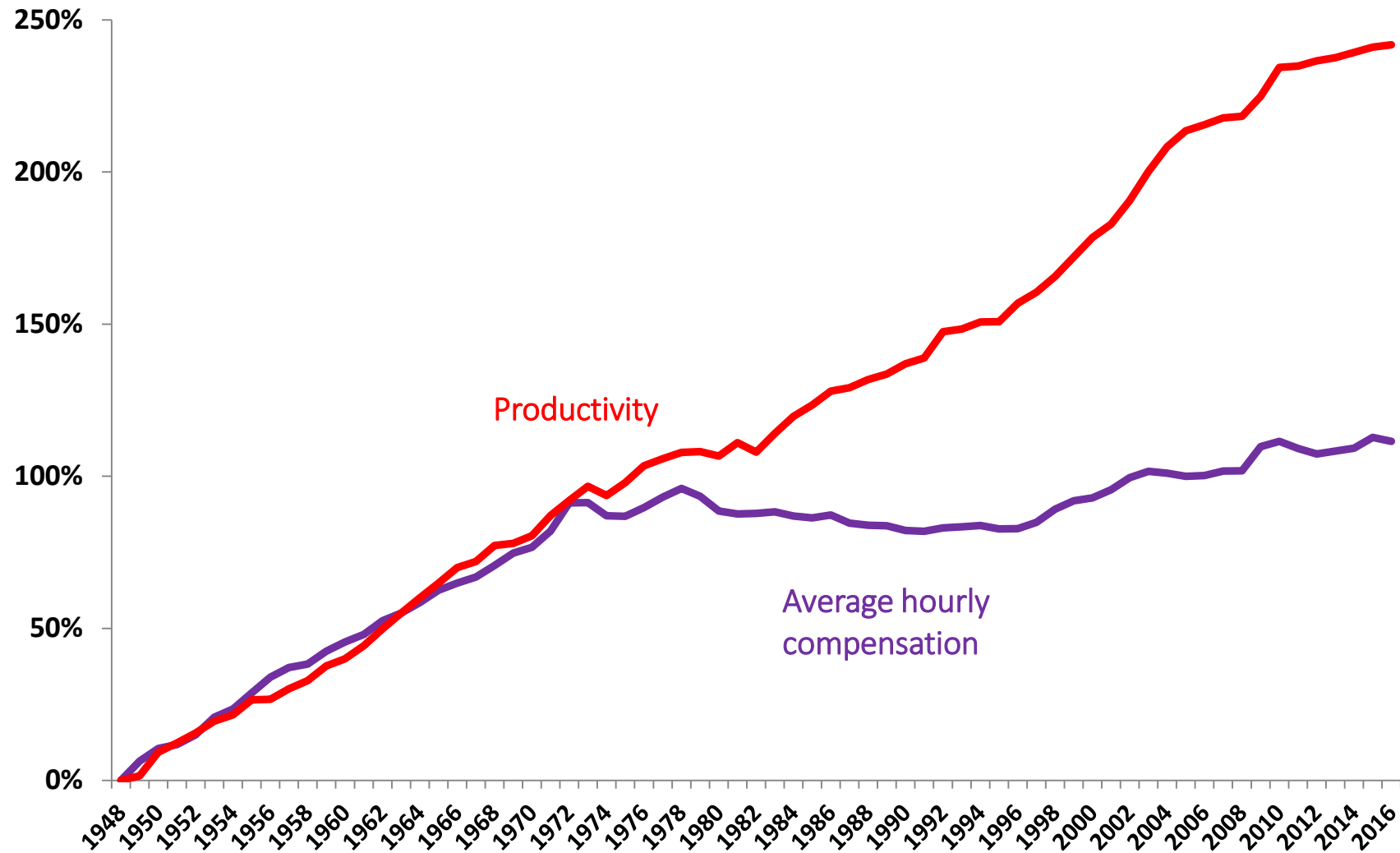


Source: Piketty, T. and Saez, E., The World Top Incomes Database. U.S. before-tax income, excluding K-gains.

# The 'free market' fallacy (Top 1% income share)

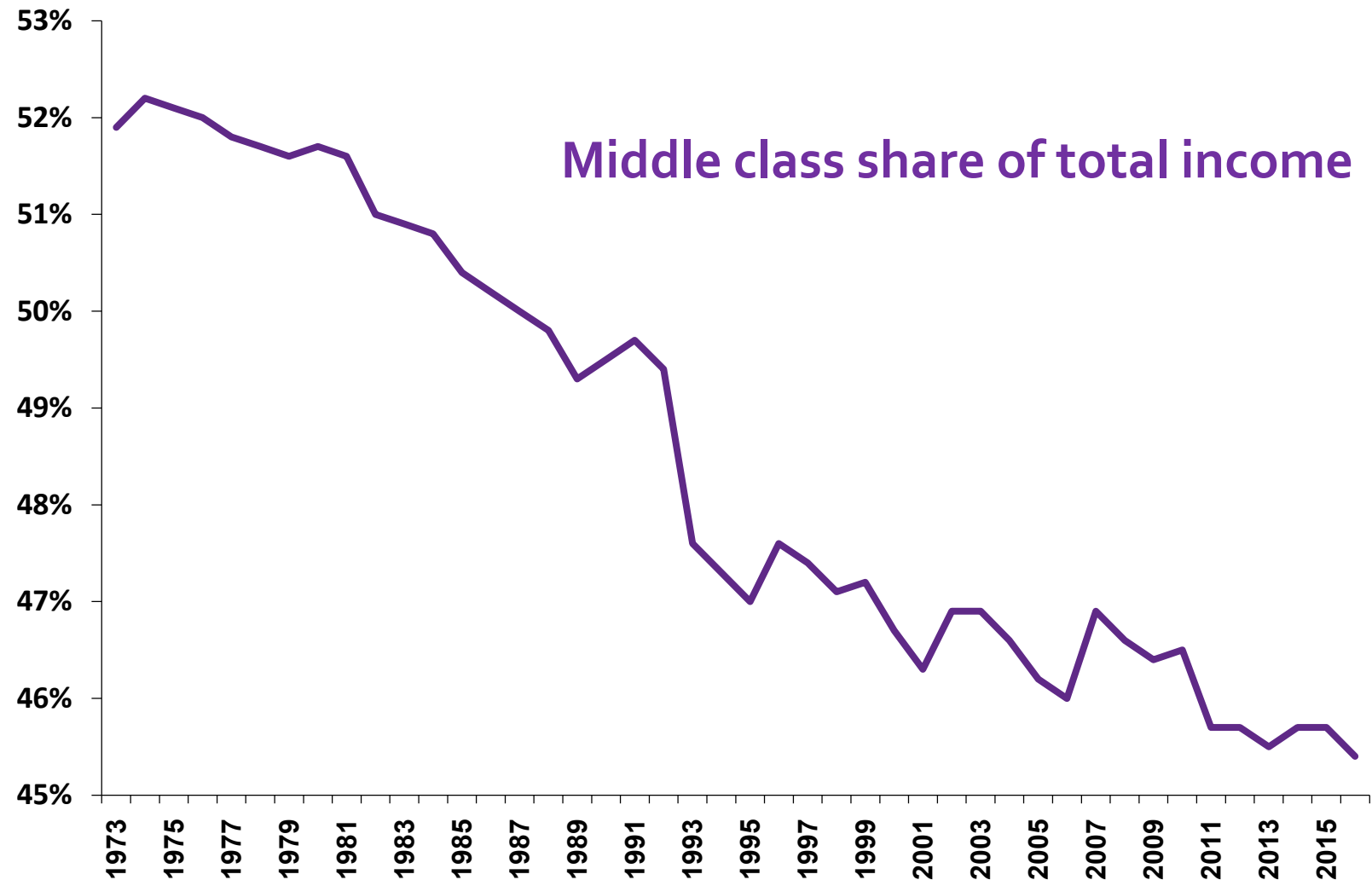


# Growing together, growing apart





# Bigger economic pie—smaller slice



# Downstream effects of the MW

- Broaden the research & discourse beyond employment outcomes
  - Wages, Employment, Menu Prices, Turnover, Working Poverty
- Vital Statistics Data from the CDC (proprietary)
  - Infant birth weight, gestation, infant mortality
    - \*Komro et al. 2016; \*Wehby et al. 2016
- Behavioral Risk Factor Surveillance System
  - Worker outcomes: Obesity, BMI, stress, access to medical care, unmet medical needs
    - \*McCarrier et al. 2011; \*Meltzer & Chen 2011; Horn et al. 2016
- CWEDs added value
  - Experts at modeling MWs – causation
  - Use other data to help ID low wage workers
  - Exploit recent, higher wage floors

