



IRLE WORKING PAPER  
#100-16  
Revised July 2016

## School Finance Reform and the Distribution of Student Achievement

Julien Lafortune, Jesse Rothstein, and Diane Whitmore Schanzenbach

Cite as: Julien Lafortune, Jesse Rothstein, and Diane Whitmore Schanzenbach. (2016). "School Finance Reform and the Distribution of Student Achievement". IRLE Working Paper No. 100-16.  
<http://irle.berkeley.edu/workingpapers/100-16.pdf>

# School Finance Reform and the Distribution of Student Achievement\*

July 2016

Julien Lafortune  
University of California, Berkeley  
[julien@econ.berkeley.edu](mailto:julien@econ.berkeley.edu)

Jesse Rothstein  
University of California, Berkeley  
and NBER  
[rothstein@berkeley.edu](mailto:rothstein@berkeley.edu)

Diane Whitmore Schanzenbach  
Northwestern University  
and NBER  
[dws@northwestern.edu](mailto:dws@northwestern.edu)

## ABSTRACT

We study the impact of post-1990 school finance reforms, during the so-called “adequacy” era, on absolute and relative spending and achievement in low-income school districts. Using an event study research design that exploits the apparent randomness of reform timing, we show that reforms lead to sharp, immediate, and sustained increases in spending in low-income school districts. Using representative samples from the National Assessment of Educational Progress, we find that reforms cause increases in the achievement of students in these districts, phasing in gradually over the years following the reform. The implied effect of school resources on educational achievement is large.

---

\* This research was supported by funding from the Spencer Foundation and the Washington Center for Equitable Growth. We are grateful to Apurba Chakraborty, Elora Ditton, and Patrick Lapid for excellent research assistance. We thank Julie Cullen, Tom Downes, Kirabo Jackson, Rucker Johnson, Richard Rothstein, Max Schanzenbach, and conference and seminar participants at APPAM, AAFP, Bocconi, Brookings, Chicago, Erasmus, Wisconsin (IRP), LSE, New York University, Northwestern, Princeton, RAND, Teachers’ College, Texas A&M, Warwick, and the 2015 Stavanger-Bergen-Berkeley workshop for helpful comments and discussions.

Economists have long been skeptical of resource-based education policies, based in part on observational studies showing small or zero effects of additional funding (see, e.g., Coleman et al. 1966, Hanushek 1986, Hanushek 2006).<sup>2</sup> Hanushek, for example, writes: “Simply providing more funding or a different distribution of funding is unlikely to improve student achievement (even though it may affect the tax burdens of school financing across the citizens of a state)” (1997, p. 153). Accordingly, recent policy discussions have focused on ways to improve the productivity of existing inputs rather than on changes in school resource levels.

Nevertheless, states have continued to implement aggressive resource-based policies, aimed in part at reducing achievement gaps. Between 1990 and 2011, average real spending per pupil in K-12 schools rose by nearly 40 percent. This increase was concentrated in low-income school districts. Figure 1 shows the evolution of average revenues per pupil, in 2013 dollars, in the lowest-income school districts (defined as the bottom fifth of each state’s district-level mean household income distribution) and the highest-income districts (the top fifth), from 1990 to 2012.<sup>3</sup> Over this period, real per-pupil revenues rose by roughly 30% in the highest-income districts, and by over half in the lowest-income districts. Thus, while low-income districts collected about 20% less than high-income districts in 1990, they have been in rough parity since around 2001.

Much of this change came via reforms to state education funding formulas. Figure 2 shows revenues of low-income districts relative to high-income districts, each defined as in

---

<sup>2</sup> There are also observational (Card and Krueger 1992a) and experimental (Krueger 1999; Dynarski, Hyman & Schanzenbach 2013) studies pointing to positive school resource effects. There is no consensus about how to reconcile these (see, e.g., Burtless 1996; Hanushek 2003; Krueger 2003).

<sup>3</sup> Hawaii and the District of Columbia are excluded. State means weight districts by log enrollment, then are averaged without weights in Figure 1. Numbers in the text weight states by enrollment for comparability with national aggregates. We discuss data sources and definitions in Section III.

Figure 1, separately for the 26 states that have implemented school finance reforms—typically but not always under court order—since 1990 and for 23 states that have not. Growth in low-income districts’ relative revenues has been more than twice as rapid in the former states than in the latter.

The implications of school finance reforms (SFRs) for school funding have been much studied (see, e.g., Hanushek and Lindseth, 2009; Card and Payne, 2002; Murray, Evans, and Schwab, 1998; Ladd and Fiske 2015). The existing research focuses on so-called “equity” reforms in the 1970s and 1980s, which aimed to reduce resource disparities across districts. But most reforms since 1990 have been “adequacy” reforms that aim to achieve sufficient funding in low-income districts, regardless of the implications for equity. Adequacy reforms have been more numerous than the earlier equity reforms, but have been much less studied.

SFRs are arguably the most substantial national policy effort aimed at promoting equality of educational opportunity since the turn away from school desegregation in the 1980s. But there is little evidence about their effects on student achievement. What evidence there is derives from non-representative data on students who took the SAT college entrance exam (Card and Payne 2002); from long-run outcomes measured in the relatively small Panel Study of Income Dynamics sample (Jackson, Johnson, and Persico 2016); or from case studies of individual reforms (Clark 2003; Hyman 2013; Guryan 2001).<sup>4</sup> These studies primarily examine pre-1990, equity-based SFRs, and generally find positive effects on student outcomes. But funding levels were much higher by 1990 than

---

<sup>4</sup> Cascio and Reber (2013) and Cascio, Gordon, and Reber (2013) examine the introduction of federal Title I funding to low-income schools via the 1965 Elementary and Secondary Education Act.

earlier, and the most severe inequities in school resources had been addressed. Thus, there may have been less scope for more recent, adequacy-based SFRs to benefit students.

The literature regarding whether “money matters” in education (Card and Krueger 1992a; Hanushek 1986, 2003, 2006; Burtless 1996) is contentious and does not offer clear guidance. State funding formulas are the main policy tool available to address inequities in academic outcomes, so funding shifts deriving from changes in these formulas are the most policy-relevant variation in school resources. The very limited evidence on the impacts of early SFRs, and the near-total lack of evidence regarding more recent reforms, represents a major shortcoming in the literature.

We provide the first evidence from nationally representative data regarding the impact of SFRs on student achievement. We exploit little-used data from the National Assessment of Educational Progress (NAEP), also known as “the Nation’s Report Card.” NAEP has administered tests in math and reading to state-representative samples of 100,000-200,000 students in the fourth and eighth grades every two to four years since 1990. Importantly, the tests have been uniform across the country and over time, facilitating comparisons.<sup>5</sup>

We use the NAEP data to construct a state-by-year panel of relative achievement in low-income school districts, covering 1990 to 2011. Conveniently, the beginning of our NAEP panel coincides with the onset of the adequacy era of school finance, which dates to the 1990 Kentucky Education Reform Act (KERA). Figure 3 shows the NAEP score gap (in standard deviation units) between low- and high-income districts over time, using the

---

<sup>5</sup> Several studies (e.g., Dee and Jacob 2011, Levine and Schanzenbach 2009) exploit state mean scores. Microdata are available under restricted-use data licenses from the National Center for Education Statistics (NCES). We are grateful to Bruce Kaplan, Kate Pashley, and Fatih Unlu for their assistance in locating the crosswalk from the older NAEP data to schools and districts.

same definitions as in Figures 1 and 2. It shows that the test score gap has narrowed in states that implemented reforms but has been stable in states that did not.

Figures 2 and 3 can be seen as long-difference estimates of the effects of SFRs, and indicate that SFRs led to increases in funding and test scores in low-income school districts. But these patterns could be driven by other trends that differ between states that did and did not implement reforms. To test this, we use an event study framework, taking advantage of plausibly random variation in the location and timing of post-1990 SFRs. We find no sign of systematic changes in either funding or test scores in the period leading up to a reform, supporting our assumption that reform timing is exogenous. Following reforms, we document sharp increases in state revenues, with larger increases in low-income districts and smaller but still positive increases in high-income districts.<sup>6</sup> These changes occur quickly after reform events, persist for many years, and are not offset by reductions in local revenues. Absolute and relative funding in low-income districts rises by approximately \$1,200 and \$700 per pupil per year, respectively.

Not surprisingly, we find no immediate effect of reforms on achievement. But we do find clear changes in achievement trends following events. These cumulate over time: Ten years after a reform, relative achievement of students in low-income districts has risen by roughly 0.1 standard deviation, approximately one-fifth of the baseline gap between high- and low-income districts. The implied impact is between 0.12 and 0.24 standard deviations per \$1,000 per pupil in annual spending. This is at least twice the impact per dollar that is

---

<sup>6</sup> Anecdotally, legislators facing court orders to increase funding to low-income districts often respond by increasing overall funding, as a way of disguising the resulting redistribution. Reforms are associated with sharp increases in total state education expenditures and tax collections.

implied by the Tennessee Project STAR class size experiment.<sup>7</sup> Given existing estimates of the relationship between test scores and students' subsequent earnings, our results imply that the benefits of marginal increases in school resources in low-income, poorly resourced school districts, in terms of students' increased eventual earnings, exceed the costs.

Our paper makes three primary contributions. First, we present the first comprehensive evidence regarding the fiscal impacts of post-1990, adequacy SFRs.<sup>8</sup> We show that these reforms lead to increased progressivity of state aid and total school finance, with little if any of the additional state funding dissipated through reduced local effort and with no sign of reactions that reduce overall funding.

Second, we present the first national evidence regarding the effect of *any* finance reforms on the achievement of a representative sample of students. Our estimates imply that additional funding distributed through court-mandated changes in finance formulas is highly productive in low-income school districts.

Finally, we present the first analysis of the impact of finance reforms on overall educational equity. We find no discernable effect of reforms on either the gap in achievement between high- and low-income students or the minority-white gap. This is not because funding is unproductive. Rather, low-income and minority students are not very highly concentrated in school districts with low mean incomes, so are not closely targeted by district-based finance reforms. Thus, while our analysis suggests that finance reforms can be quite effective at reducing between-district inequities, other policy tools aimed at

---

<sup>7</sup> STAR raised costs by about 30% in K-3, and raised test scores by 0.17 SDs (Krueger and Whitmore 2001). Current spending per pupil in Tennessee is around \$9,000, so comparable proportional class size reductions would cost around \$2,700 per pupil per year. The implied effect is thus around 0.06 SDs per \$1,000 per pupil. This comparison implicitly assumes that maintaining the smaller STAR class sizes beyond 3rd grade would yield no additional growth in test scores.

<sup>8</sup> Sims (2011a) and Corcoran and Evans (2015) contrast fiscal impacts of equity and adequacy reforms. But their samples end in 2002, and thus reflect only the beginning of the adequacy era.

*within*-district resource and achievement gaps will be needed to address overall equity concerns.

## I. School finance reforms<sup>9</sup>

Historically, American public schools were locally managed and financed primarily via local property taxes. As school districts vary widely in both their tax bases and their voters' willingness to tax themselves to fund schools, this meant that school resources varied substantially across districts.

In the 1960s, a group of legal scholars argued that local school finance violates federal and state constitutional provisions that guarantee equal access to public services (see, e.g., Wise 1967; Horowitz 1966; Kirp 1968; and Coons, Clune, and Sugarman 1970). Advocates brought and won suits in many states demanding more equitable school finance systems; in other states, legislatures acted without court decisions (often to stave off potential rulings).<sup>10</sup>

The resulting finance regimes often involved substantial increases in state transfers to districts that depended either on local fiscal capacity ("power equalization") or realized local revenues ("matching" or "variable" grants). An extensive "fiscal federalism" literature examines the effects of these reforms on the distribution of school funding (see, e.g., Hanushek and Lindseth, 2009; Corcoran and Evans, 2015; Card and Payne, 2002; Murray, Evans, and Schwab, 1998). A particular focus is whether formulas that raise the marginal

---

<sup>9</sup> Our discussion here draws heavily on Koski and Hahnel (2015).

<sup>10</sup> An early U.S. Supreme Court decision, *San Antonio Independent School District v. Rodriguez* (411 US 1, 1973) held that education is not a fundamental right under the U.S. Constitution. Subsequent suits focused on state constitutions, which often articulate responsibility for a system of public education.



local cost of additional school spending affect voters' choices about the local spending level (e.g., Hoxby 2001).

A second wave of finance reforms—the focus of this paper—is commonly dated to a 1989 Kentucky Supreme Court ruling. Here, the Court found that the state constitution, which as in many other states dictates an “efficient system” of public schools, requires that “[e]ach child, *every child*, ... must be provided with an equal opportunity to have an adequate education” (*Rose v. Council for Better Education*<sup>11</sup>; emphasis in original). The ruling emphasized that equal funding was not sufficient, and articulated a standard closer to equality of outcomes for students in low-income districts (“sufficient levels of academic or vocational skills to enable public school students to compete favorably with their counterparts in surrounding states, in academics or in the job market”). The Kentucky legislature responded with the Kentucky Education Reform Act of 1990 (KERA), which revamped the state’s educational finance, governance, and curriculum. Clark (2003) and Flanagan and Murray (2004) find KERA substantially increased spending in low-income districts.

Since 1990, courts in many other states have found adequacy requirements in their own constitutions. In many cases reforms have aimed at *higher* spending in low-income than in high-income districts, to compensate for the out-of-school disadvantages that low-income students face.<sup>12</sup>

Reform advocates have consciously imitated the legal campaign for school desegregation in the 1950s-1980s, and like that movement have operated

---

<sup>11</sup> 790 SW 2d 186. *Rose* was not the first adequacy ruling, but earlier rulings attracted less attention.

<sup>12</sup> A small industry has developed to calculate the spending level needed to satisfy an adequacy standard. See, e.g., Downes and Steifel (2015) and Duncombe, Nguyen-Hoang, and Yinger (2015).

opportunistically, taking advantage of variation in legal precedent and the availability of sympathetic judges to advance a national effort. Courts in different states have interpreted seemingly similar state constitutional language quite differently, either imposing or ruling out adequacy requirements.<sup>13</sup> There is little reason to think that the cases are brought in response to political or other developments that would have independently affected achievement gaps in a state. Moreover, the vagaries of the judicial process—cases are typically appealed upward through several levels of review—and decisions in some states to implement legislative reforms to settle ongoing cases or forestall feared court rulings generate additional quasi-random variation in timing. Our analytic strategy, developed below, is premised on the assumption that reform timing is uncorrelated with other determinants of trends in (relative) spending and achievement in low-income districts. We present evidence in support of this assumption in Sections IV and V.

We have attempted to identify all major SFRs between 1990 and 2011. We began with lists of court-ordered reforms compiled by Jackson et al. (2016) and Corcoran and Evans (2015). We supplemented these with our own research into case histories, and updated them through 2011. We also tabulated major legislative SFRs. In some important cases (e.g., Colorado, California), legislatures reformed finance systems without prior court decisions, often to forestall adverse judgments in threatened or ongoing lawsuits. Our primary analyses include these, though we also present results that focus exclusively on court orders.

---

<sup>13</sup> For example, the Illinois Supreme Court has found that school finance rules are not justiciable by the courts and must be addressed instead by the legislature (672 N.E.2d 1178 ). The relevant clause in the state’s constitution (“an efficient system of high-quality public educational institutions and services”) is similar to that in Ohio (“a thorough and efficient system of common schools throughout the State”), where the courts have intervened.

Appendix Table A1 presents a complete list of our events and compares it to those used in other studies. We identify a total of 64 school finance reform events in 26 states between 1990 and 2011.<sup>14</sup> 39 (61%) involve court orders; the remainder are legislative actions without a major court order in the same year.

Figure 4 shows the distribution of events over time, with legislative SFRs indicated by darker bars. There have been substantially more court-ordered SFRs during the adequacy era than in the prior, more studied equity era.<sup>15</sup> Figure 5 shows the geographic distribution. States with events are quite geographically diverse, though reforms are rare in the Deep South and upper Midwest.

18 states had multiple events in our period. These were generally closely spaced: 60% were three or fewer years apart. In these cases, we suspect that only one generated a major change in the state's finance rules and that others were procedural steps (e.g., court orders that were disregarded or legislation changes that were later found inadequate). Our analytical strategy is built with this idea in mind, though our results are not sensitive to how multiple events are treated.

As with earlier equity reforms, states under adequacy orders have varied in the finance systems that they have adopted. Despite this heterogeneity, there are two important reasons to expect that adequacy reforms had different impacts on the level and distribution of school funding than did earlier equity reforms. First, equity reforms often focused on districts' property tax bases, where adequacy reforms focused on student disadvantage; the two may not be strongly correlated (Fischel 1989). Second, where a state

---

<sup>14</sup> Our panel excludes the 1989 *Rose* decision but includes KERA, the legislature's response in 1990.

<sup>15</sup> Jackson et al. (2016) code 15 court-ordered SFRs from 1971 through 1989, and 48 since then. We code a few cases differently than have earlier authors. These are discussed in the Appendix.

might respond to an equity order by “leveling down” to stingy but equal funding, this would not satisfy an adequacy mandate. States seem instead to have increased funding to *all* districts to meet adequacy requirements while still allowing higher-income districts to differentiate themselves.

Overall, then, we expect that adequacy reforms caused higher spending, in general and particularly in low-income districts, than did equity reforms, but perhaps also yielded smaller reductions in the between-district dispersion (Baker and Green, 2015; Downes and Stiefel, 2015). We confirm these predictions below.

## **II. Analytic approach**

The primary challenge in estimating the causal effect of school funding is that it may be correlated with other factors that affect realized school finance or student outcomes. An important concern is that states that are more aggressive in targeting funding to low-income school districts may also differ in other ways—they may have better developed social welfare systems, more equitable housing price distributions, or different approaches to regulating school quality (Hanushek, Rivkin, and Taylor 1996a,b).

To address this, we leverage variation in the timing of reform events in an event-study framework. Our strategy is based on the idea that states without events in a particular year form a useful counterfactual for states that do have events in that year, after accounting for fixed differences between the states and for common time effects. The key assumption is that the exact timing of events is as good as random. We think this is plausible, given the idiosyncrasies of judicial processes discussed above. An attractive

feature of our approach is that it builds in placebo tests that should identify likely violations of this assumption.

Our simplest event study specification models events as permanent, immediate shifts in outcomes relative to other states:

$$(1) \quad \theta_{st} = \delta_s + \kappa_t + 1(t > t_s^*)\beta^{jump} + \varepsilon_{st}.$$

Here,  $\theta_{st}$  represents some summary of the distribution of funding or achievement in state  $s$  in year  $t$ . We discuss our particular measures below.  $\delta_s$  and  $\kappa_t$  represent state and year effects, respectively.  $t_s^*$  is the date on which state  $s$ 's event occurred. (For now, we assume that each state just one event; this term is set to zero for states that do not have events.) The coefficient estimate  $\beta^{jump}$  represents the change in the outcome following the event.

SFRs may not affect  $\theta_{st}$  immediately, but may develop more gradually. This is particularly true for student achievement outcomes, as the achievement of a student in year  $t$  likely depends in part on the quality of the schooling she received in prior years. In addition, if event timing is non-random, states with events may diverge from states without events even before the date of the event. To accommodate these ideas, we add two trend terms to (1):

$$(2) \quad \theta_{st} = \delta_s + \kappa_t + 1(t > t_s^*)\beta^{jump} + 1(t > t_s^*)(t - t_s^*)\beta^{phasein} + (t - t_s^*)\beta^{trend} + \varepsilon_{st}.$$

$\beta^{phasein}$  captures delayed event effects and represents the annual change in outcomes in state  $s$  after  $t_s^*$ , relative to the same state prior to the event.  $\beta^{trend}$ , which is identified from changes in  $s$  relative to other states in years *prior* to  $t_s^*$ , represents a falsification test:  $\beta^{trend} \neq 0$  would indicate that event timing is meaningfully non-random.

We also estimate non-parametric models that do not constrain the phase-in and prior trend effects to be linear:

$$(3) \quad \theta_{st} = \delta_s + \kappa_t + \sum_{r=k_{min}}^{k_{max}} 1(t = t_s^* + r) \beta_r + \varepsilon_{st}.$$

Here,  $\beta_r$  represents the effect of an event in year  $t_s^*$  on outcomes  $r$  years later (or previously, for  $r < 0$ ). These effects are measured relative to year  $r=0$ , which is excluded. We censor  $r$  at  $k_{min}=-5$ , so  $\beta_{-5}$  represents average outcomes five or more years prior to an event, relative to those in the event year.

Comparisons of the parametric and non-parametric estimates indicate that the simple specification (2) does a good job of capturing dynamics in finances and student achievement surrounding events, though the post-event “jump” is sometimes spread out over a few years following the event. The  $\{\beta_{-k}, \dots, \beta_{-1}\}$  pre-event terms in (3) are the equivalent of the pre-event trend coefficient  $\beta^{trend}$  in (2). In only one of the specifications that we estimate is either  $\beta^{trend}$  or the set of nonparametric pre-event coefficients significantly different from zero, and in this case it appears to be an idiosyncratic blip in a single  $\beta_r$  coefficient (see Figure 12, below). This supports our identifying assumption.

When we examine finance outcomes, all of the post-event effect appears to be nearly immediate, so we focus on the simpler specification (1). By contrast, in our student achievement analysis, the “jump” is never distinguishable from zero, and all of the effect that we estimate operates through the  $\beta^{phasein}$  coefficient. We thus emphasize specifications that allow for a phase-in effect but no post-event jump. In each case, these simple specifications fit the non-parametric results quite well.

### Difference-in-differences and triple-differences

The event study methodology outlined above is a form of difference-in-differences (DD), identifying the effect of events from deviations in the trend in “treated” states relative

to states that have not yet had events. The identifying assumption is that without finance reforms, outcomes would have moved in parallel in treated and untreated states. Hanushek et al. (1996a,b) are critical of this assumption with regard to the impacts of school spending in state-by-year panels. They argue the parallel trend assumption is unlikely to hold, biasing DD estimates.

Accordingly, while we present below DD estimates with mean spending or mean test scores in a state as the outcome, we believe that more credible estimates of the effect of funding reforms can be obtained from triple-difference (DDD) models that compare the impacts of SFR events on high- and low-income districts in a state. We implement these using the DD methodology above by using as the dependent variable  $\theta_{st}$  a measure of the achievement of low-income districts in a state *relative* to that in higher-income districts. With this type of dependent variable, the event study strategy is robust to arbitrary state-by-year shocks to spending or achievement, so long as they have similar effects on districts at different income levels. The identifying assumption is that the *relative* outcomes of low-income districts would have followed parallel trends across states in the absence of SFRs.

We consider two measures of relative spending or achievement in low-income districts. First, we use the gap between districts in the top and bottom quintiles of the state income distribution, as in Figures 2 and 3. These quintile gaps can be noisy, in part because they discard information on the middle 60% of districts. We thus emphasize a second measure, the slope of district-level outcomes with respect to log average income across all districts in the state.<sup>16</sup> A more negative slope corresponds to higher relative outcomes in

---

<sup>16</sup> Specifically, we regress district-level spending per pupil or mean achievement on log mean income, controlling for log enrollment. The regression is estimated separately for each state and year, and in

low-income districts. Appendix Figure A2 shows that the long-difference analysis from Figures 2 and 3 is robust to using our slope measures in place of quintile gaps, and yields even stronger results.

To illustrate, Figure 6 shows the scatterplot of per pupil state transfers to districts against log mean district income (measured in 1990) for each district in Ohio, first in 1990 and then in 2011. As the figure shows, state transfers rose dramatically over this period, particularly in the lower-income districts. We overlay two fitted series on top of this: One shows mean transfers across all districts in each income quintile, and the other shows the slope as described above. In this case, the log-linear specification fits the quintile means fairly well. Across states, the slope is correlated -0.73 with the first-quintile/fifth-quintile gap.

We show below that SFRs lead to higher absolute revenues in all districts in a state and to higher relative revenues in low-income districts, as seen for Ohio in Figure 6. Each of these could affect the relative achievement of students in low-income districts. First, if money matters, then the increase in relative spending should raise low-income districts' achievement. Second, the marginal effect of extra funds may be higher in low-income districts, perhaps due to declining marginal productivity of additional resources. If so, even an across-the-board spending increase would raise their relative achievement. Given these two channels, and timing issues that will become clear below, we are cautious in converting our estimated effects on achievement into estimates of output per dollar, as it is not clear what is the appropriate denominator for our DDD treatment effects.

---

achievement models for each subject and grade. The district log income coefficients are used as  $\theta_{st}$  for subsequent analyses at the state-year-(subject-grade) level. See the Appendix for further detail.



### Event studies with multiple events

As noted above, many states had multiple events (court orders or legislation) over our period. Unfortunately, there is no accepted strategy for conducting event studies with multiple events per unit.

Ohio illustrates both the challenge and our proposed solution. The state Supreme Court ruled four times on the *De Rolph v. State* case, in 1997, 2000, 2001, and 2002. The 1997 ruling declared the state's finance system unconstitutional on adequacy grounds, and specifically rejected the state's reliance on local property taxes. The Court ordered a "complete systematic overhaul" of the school funding system. In 2000, the Court determined that the legislature had failed to act and that funding levels remained inadequate. The same year, the legislature revised the system, and a subsequent ruling in 2001 determined that the new system, with a few minor changes, satisfied constitutional requirements. This decision was reversed in 2002, by the same Court (albeit with a different makeup of judges), and the legislature ordered to make further changes. To our knowledge, the legislature did nothing to comply with this.

Our reform database includes Ohio events in 1997, 2000, and 2002. Based on the above case history, we might expect only the 2000 event to be associated with major changes in school finance in Ohio. But the data tell a different story. Figure 7 shows the time series of our two measures of the progressivity of state aid in Ohio: The difference in average state transfers per pupil between the lowest-income and highest-income fifths of Ohio school districts (black) and the slope of state transfers with respect to log income, multiplied by -1 for comparability (gray). Vertical lines indicate the reform events. The figure shows that state transfers were progressive in 1990 and slowly became more so in

the first few years of our data. Around 1998, the trend became notably steeper, and by 2002 average state aid per pupil was \$4,851 higher in low-income than in high-income districts. If anything, relative funding has declined since 2002. This pattern appears consistent with a gradual reaction to the initial 1997 ruling. There is less visual evidence of the 2000 event, which did not interrupt the previous trend, while the 2002 ruling seems to coincide with an *end* to the increases in progressivity.

Based on the patterns in Ohio and elsewhere, we adopted two analytical decisions for our primary estimates. First, we choose a single event in each state. Our idea here is that when states have multiple events, they often represent jockeying between the legislature and the courts with only minor changes in school finance until the legislature finally enacts a major reform, and then continued jockeying afterward as advocates continue to push for smaller additional changes.

Second, we do not rely on reviews of case histories to identify the consequential events, as the rhetoric in court orders and preambles to bills is often (as in Ohio) misleading about the magnitude of the change being made. Rather, we use the state aid data to identify a regime change in the progressivity of a state's finance system, relying on methods for the identification of change points in time series data (e.g., Bai 1997; see also Card, Mas, and Rothstein 2008).

Specifically, let  $\theta_{st}$  be our slope measure of the progressivity of state aid. For each state and each potential event date  $t_s^*$ , we estimate a time series regression using as the only explanatory variable an indicator for observations after that date:

$$(4) \quad \theta_{st} = \alpha + 1(t > t_s^*)\kappa + \varepsilon_{st}.$$

We select the date that yields the largest  $t$  statistic for  $\kappa$  – or, equivalently, the smallest mean squared error – for this time series regression.<sup>17</sup> We treat the selected date as the single event in state  $s$ . Bai (1997) shows that this method is super-consistent (with faster than  $\sqrt{N}$  convergence) for the location of a structural break in a time series, permitting inference regarding the magnitude of the break to treat its location as known.

We present estimates from two additional approaches to multiple events. One includes all events, without judgment about their relative importance. We create a separate copy of the time series for the state for each event, using a different value of  $t_s^*$  for each copy. We then stack the copies, replacing the state effects in equations (1)-(3) with state-by-event effects.<sup>18</sup> In Monte Carlo simulations, this method works well to identify the average effect of events both when each event has the same effect and when only one event in a state has a non-zero effect.

Our final approach follows the prior literature by focusing on the initial court order in each state. Past authors have argued that the timing of initial court orders is effectively random but that legislative events and subsequent court orders may not be. The drawback to this approach is that there can be long lags between the initial court order and the implementation of a reform. It is thus better suited to simple models like (1) that are not sensitive to mis-timing the structural break—most past work using this approach has focused on such models—than to more flexible models like our non-parametric specification (3).

---

<sup>17</sup> We restrict attention to  $t^*$  for which the estimated  $\kappa$  has the expected sign.

<sup>18</sup> Results are unchanged when data are reweighted to offset the overrepresentation of states with multiple events.

In appropriate specifications, results are quite robust across all three methods. Accordingly, we do not view multiple events as a major issue in practice.

### **III. Data**

Our analysis draws on data from several sources. We begin with our database of state SFR events, discussed above. We merge this to district-level school finance data, from the National Center for Education Statistics' (NCES) annual census of school districts (the Common Core of Data, or CCD, district finance files, also known as the "F-33" survey) and the Census of Governments; mean household income by district from the 1990 Census; and NAEP achievement.

The CCD district finance data report enrollment, revenues and expenditures annually for each local education agency (LEA).<sup>19</sup> We convert all dollar figures to 2013 dollars per pupil, and exclude very small districts and those with highly volatile enrollment or implausible per-pupil funding. Details are in the appendix.

Our student outcome measures come from the National Assessment of Educational Progress (NAEP). We use restricted-use microdata from the "State NAEP," designed to produce state-representative samples. State NAEP began in 1990, with 42 states participating. It has been administered roughly every two years since. Since 2003, all states have participated in 4<sup>th</sup> and 8<sup>th</sup> grade assessments in math and reading in every odd-numbered year.<sup>20</sup> Table 1 shows the schedule. Tests are administered to around 100,000 students (more in later years) in each subject-grade-year. These consist of representative samples of about 2,500 students per state, spread across about 100 schools.

---

<sup>19</sup> Census data are available in 1989-90 and 1991-92, and annually since 1994-95. We use samples from the Census Bureau's Annual Survey of Government Finances for 1992-93 and 1993-94.

<sup>20</sup> The NAEP also tests 12<sup>th</sup> graders, but samples are smaller, and other subjects.

The NAEP uses a consistent scoring scale across years for each subject and grade. We standardize scores to have mean zero and standard deviation one in the first year that the test was given for the grade and subject, but allow both the mean and variance to evolve afterward. We then aggregate to the district-year-grade-subject level and merge to the CCD and SDDB.<sup>21</sup>

Table 2a presents district-level summary statistics, pooling data from 1990-2011. Table 2b presents summary statistics for the state-year panel.

#### **IV. Finance reforms and school finance**

We begin our empirical analysis by documenting the implications of SFR events for school finance. We use the approach discussed in Section II to identify a single SFR event in each state, selecting among candidate events the one that best explains the time series of the state aid – log district income slope in the state.

Figure 8, panel A graphs event study results for average state transfers per pupil in the state, pooling all districts. We present a number of plots of this basic form. The solid line presents estimates of the non-parametric event study specification (3), while dotted lines show pointwise 95% confidence intervals. The dashed line shows the parametric specification (2).

Point estimates indicate that average state transfers to districts rise in the years leading up to an event, though this could be just sampling error – the p-value for equality across all years prior to the events is 0.31. By contrast, in the four years following the event average state transfers rise by roughly \$1,000. They decline somewhat in subsequent

---

<sup>21</sup> The pre-2000 NAEP data do not use the same district codes as the CCD. We crosswalk using a link file produced for NCES by Westat (and obtained from the Educational Testing Service), using district names to check and supplement the crosswalk.

years, but even 15 years after the focal event remain approximately \$500 above what would have been expected without the event. The differences from the event year are significant both collectively ( $p < 0.001$ ) and individually for relative years 1-10. The parametric specification fits the nonparametric results well. Panel B of Figure 8 repeats the exercise, this time using total per-pupil revenues (inclusive of local revenues and federal transfers) as the dependent variable. The pattern is quite similar here, with little indication that increases in state revenues are offset by reductions in local effort on average.

Columns 1 and 3 of Table 3 present coefficients from our simplest one-parameter event study specification (1), first for state revenues and then for total revenues. Events are associated with increases in state aid of \$912 per pupil, and with slightly smaller increases (\$829 per pupil) in total revenues. Columns 2 and 4 present the three-parameter specification (2). Post-event effects are quite similar to those seen in the one-parameter models; while point estimates indicate that they trend down over subsequent years, these are not distinguishable from zero. In column 2, the upward trend preceding events that was visible in Figure 8a is small and insignificant, supporting our assumption that event timing is random.

These results preview a general pattern we see throughout our finance analyses. Nonparametric models show a large jump over the first three to four years following the event, with relatively small trends before and after. Pre-event trends are never statistically significant, and while we can generally reject zero effect of events on all post-event outcomes, we can never (in the three-parameter model) reject a single jump following the event that persists unchanged thereafter. Accordingly, we focus on the one-parameter model for subsequent finance analyses.

In additional analyses of state budgets, (Appendix Table A2) we have found no indication that growth in educational spending following events crowds out state spending on other programs; rather, SFRs are associated with increases in state tax collections large enough to fully fund the increase in state transfers to districts.

We turn next to examining the impact of SFRs on the *distribution* of funding across school districts. Figure 9 presents event study analyses, similar to those in Figure 8, for average state aid and total revenues per pupil in districts in the top and bottom quintiles of the state income distribution. There is again some indication of pre-event upward trends in state revenues, but again we cannot reject the null hypothesis of zero pre-event differences. Both low- and high-income districts see increases in state and total revenues following the event, but the increases are larger in low-income districts: Roughly \$1,300 by the 4<sup>th</sup> post-event year, vs. less than half that (and not robustly significant) in high-income districts. Though out-year estimates are noisy, impacts appear to persist through the end of our sample. Patterns for total revenues are very similar to those for state revenues, and show little sign that state revenue increases are offset by reductions in local revenues.

Panels B and C of Table 3 present the parametric estimates for the lowest- and highest-income districts. Average state funding is \$1,225 higher after events in first quintile districts and \$527 (not significant) higher in fifth quintile districts; in each case, total revenue changes are of similar magnitude, and the more flexible specification yields similar results.

Figure 10 shows estimates of impacts on the progressivity of total revenues, using in the top panel the difference in funding between bottom- and top-quintile districts and in the lower panel the slope of funding with respect to log district income. Parametric models

for these outcomes are shown in Column 4 of Table 4. Using each measure, we see sharp increases in relative state funding for low-income districts following events that are sustained (though not always precisely estimated) for many years. In no case is there any sign of a pre-event trend that would suggest a violation of our random timing assumption. Nor is there any sign in Table 4 that increased progressivity of state aid is offset by local revenues.<sup>22</sup>

A natural question is how the additional funds are spent. Table 5 presents event-study coefficients from our one-parameter model for per-pupil revenues and spending in various categories. There is no apparent impact of SFRs on local or federal revenues. We see substantial impacts of SFRs on average instructional spending, both overall and in Q1 districts (columns 2 and 3). We also see effects on teachers per pupil, suggesting that districts use additional funds to reduce class size, though we find no sign of impacts on teacher pay.<sup>23</sup> We also see large increases in non-instructional expenditures, particularly capital outlays.

Columns 4 and 5 show results for *relative* spending in low-income districts. Little of the increase in relative funding goes to instructional expenditures, while roughly half goes to capital spending. The capital spending effect is not surprising; many lawsuits specifically concern dreadful conditions in low-income schools, and SFR remedies often created funds to support renovation of schools in poor shape.<sup>24</sup>

---

<sup>22</sup> When we estimate specifications similar to Card and Payne's (2002) closely related analysis of earlier SFRs (Appendix Table A3), estimated SFR effects are slightly larger but imprecise, and well within the earlier confidence intervals. Where Card and Payne find that total revenues rise by about \$0.50 per extra \$1 in state aid, our estimates indicate much more stickiness for the recent reforms.

<sup>23</sup> Using a different research design, Sims (2011b) finds effects of SFRs on teacher pay.

<sup>24</sup> Neilson and Zimmerman (2014) find that school reconstruction causes increases in student achievement. Cellini et al. (2010) and Martorell, Stange, and McFarlin (2015) fail to find significant effects, but each study is under-powered to detect effects of plausible magnitude.



## V. Finance reforms and district-level student achievement

We can now turn to our main analysis, examining the effect of SFRs on student achievement. The above results establish that reform events are associated with sharp, immediate increases in the progressivity of school finance, with absolute and relative increases in revenues in low-income school districts. If additional funding is productive, we might expect to see impacts on student outcomes.

Where the  $\theta_{st}$  school finance measures formed a state-by-year panel, for test scores we have two additional dimensions: Grade and subject. We replace the year fixed effects ( $\kappa_t$ ) in (1)-(3) with subject-grade-year effects. These capture any differences in tests between administrations, as well as changes in student performance by grade and/or subject that are common across states. To avoid confounding from state-level shocks, we focus on DDD specifications that use the achievement gap between low- and high-income districts as the dependent variable.

Sharp, permanent changes in funding, if used productively, should increase the flow of educational services. Achievement is cumulative, so these services are unlikely to have immediate impacts on test scores, but should raise scores gradually as students are exposed for longer. Effects should grow at least until students have been exposed to the new funding levels for their entire careers. They may even continue to grow beyond this point. For example, consider a state that responds to a court order by creating a new permanent facility to fund several school renovation and construction projects each year. Initially, only a few students benefit, but over time growing shares of students are exposed to funded projects. Insofar as better facilities promote student learning, achievement effects would continue to grow until several years after the last project is complete,

potentially decades after the initial policy change. We thus emphasize the phase-in coefficient from equation (2) as the primary measure of SFR effects on test scores.

Figure 11 presents our event-study analysis of the slope of achievement with respect to district income. As before, we present non-parametric results (equation 3) as a solid line and estimates of our three-parameter model (equation 2) as a dashed line. There is no indication of a differential trend in reform states prior to events. Following events, the non-parametric series does not react immediately, but begins trending noticeably downward starting in about the fifth post-event year. The downward trend continues through the end of our sample.<sup>25</sup>

Table 6 presents parametric estimates. We begin in Column 1 with our three-parameter model, as shown in Figure 11. Again, the estimated pre-event trend is essentially zero and the post-event jump is also small, but the post-event change in trend is large and statistically significant. Column 2 presents a specification that discards the other two coefficients. Results are quite similar. The estimated change in the slope is -0.010 per year. This implies that each year after an event, a district with log mean income one unit (about two thirds) below the state average sees its scores rise relative to the state average by 0.010 standard deviations, accumulating to 0.10 SDs over ten years. This is quantitatively meaningful – on average in our sample the slope of test scores with respect to log income is 0.96 so SFRs reduce this gradient by approximately one-tenth within ten years.

As discussed above, the pattern of gradually growing effects in Figure 11 is consistent with a view of achievement as a stock reflecting accumulated past input flows. The pattern deviates from expectations in one respect, however: There is no indication that

---

<sup>25</sup> The sawtooth pattern at the end of the sample likely reflects the biannual NAEP testing schedule.

the phase-in of the effect slows five or nine years after the event, when the 4<sup>th</sup> and 8<sup>th</sup> graders, respectively, will have attended school solely in the post-event period.<sup>26</sup> This may reflect the use of some additional funds for durable investments, as discussed above. We do not have enough precision, however, to rule out a flattening of the effect at the expected time.

Figure 12 presents estimated test score impacts for the lowest- and highest-income districts. The effects on the income gradient are driven by dramatic increases in test scores in the lowest-income districts.<sup>27</sup> In higher-income districts, there is little sign of a systematic post-event change. Parametric estimates are shown in Columns 3 and 4 of Table 6; Column 5 shows that the impact of events on the test score gap between bottom- and top-quintile districts is 0.008 SDs per year. This grows when trend terms are included (column 6). The gap in mean log incomes between the top and bottom quintiles averages 0.65, so the quintile point estimate is a bit larger than what we obtain for our income slope measure in columns 1-2. Our earlier finance analyses also indicated larger effects for quintile gaps than for slopes.

Appendix Figure A3 presents estimates of the phase-in coefficient for all five quintiles. Only the first quintile effect is large or distinguishable from zero. The ratio of test score effects to spending effects is larger at the bottom of the income distribution, consistent with the idea that funding is more productive in low-income districts, but equal ratios cannot be ruled out.

---

<sup>26</sup> We have estimated separate non-parametric models for 4<sup>th</sup> and 8<sup>th</sup> grade scores. Both sets of effects grow roughly linearly through the end of our panels. See Appendix Figure A4.

<sup>27</sup> For the lowest-income districts (Figure 12A), we can reject the null hypothesis of zero pre-event effects. This is driven by what appear to be a blip in test scores two years prior to events. A similar blip is apparent for high-income districts in Panel B. There is no sign of systematic pre-event trends.

Table 7 presents estimates separately by grade and subject. We cannot reject the null hypothesis of equal effects across each dimension.

### Robustness

Table 8 presents estimates of our key specifications from our two alternative approaches to event multiplicity. Column 1 repeats the estimates from our preferred approach from Tables 4 and 6. In Column 2, we include all identified events, creating separate panels for each; in Column 3, we focus only on the first court order in each state. Results are similar to those from our main specifications, though the initial court order approach yields less precise, insignificant estimates of finance effects.

One potential explanation for the achievement impacts that we identify is that they reflect changes in population stratification rather than changes in educational production. SFRs that flatten the gradient of school funding with respect to district income and that reduce the local share of school finance reduce the value of living in a high-income district, and may lead some high-income families to relocate to previously low-income districts. This could lead to rising achievement in these districts with no change in school effectiveness.

We assess this possibility in three ways. First, we have tested whether between-district income gaps narrow in the years following SFRs. We have found no evidence for this – district log incomes in 2011 are highly correlated with those in 1990, and there is no sign that gaps narrow in states that had reforms vs. those that didn't. Second, we have conducted event study analyses, parallel to those for test scores, for district income or the district non-white or free- or reduced-price lunch eligible share (Appendix Table A5). In only one specification – for the between-quintile gap in the free lunch share – do we find

evidence that the demographic composition of (initially) low-income districts changes following SFRs. This result is not robust, and is small relative to the test score impacts that we estimate.

Third, we decompose test scores into two components, and estimate separate SFR effects on each. Specifically, we estimate an individual-level regression of test scores on student demographic characteristics, pooling NAEP data across years for each grade-subject pair and including year fixed effects. We then construct separate achievement-log district income gradients from the fitted values (excluding the fixed effects) for this regression, representing student characteristics that would be affected by SFRs only through changes in sorting, and from the residuals. Table 9 presents results of our event study analyses of these gradients. We present two decompositions: The first panel uses only race and gender, which are consistently available in each NAEP wave, along with school means of these. The next uses additional covariates, parental education and free lunch status, that are less consistently available, including indicators for years in which each is unavailable. The first set of variables explains 22% of the variance in student test scores (net of the subject-grade-year effects), while the second set explains 28%.

We find no evidence that reforms affect the demographic component of our test score progressivity measures. Point estimates are less than half the size of our overall test score impacts, and are never significantly different from zero. By contrast, estimated effects on the residual component of test scores are significant and about two-thirds the size of the overall impacts. Thus, while we cannot rule out small effects of SFRs on student sorting, the robustness of effects on the residual component supports our interpretation that our results primarily reflect changes in educational production in low-income school districts.

As a final robustness exercise, we have tested whether the SFR effect on achievement is sensitive to including controls for the presence of a school accountability policy in a state, or whether the SFR effect varies with school accountability. We found evidence for neither.

## **VI. Finance reforms and statewide achievement gaps**

The final topic that we investigate is whether finance reforms closed overall test score gaps between high- and low-achieving, minority and white, or low-income and non-low-income students in a state. These are perhaps better measures than our slopes and quintile gaps of the overall effectiveness of a state's educational system at delivering equitable, adequate services to disadvantaged students (Krueger and Whitmore 2002; Card and Krueger 1992b). However, because most inequality is within districts, changes in the distribution of resources across districts may not be well enough targeted to meaningfully close these gaps.

Table 10 presents estimates of effects on mean test scores across different subgroups of interest. The first panel shows a DD estimate of the effect on mean (pooled) test scores. The point estimate (not insignificant) implies a smaller impact per dollar than do our between-district contrasts, though we cannot rule out comparable effect sizes. In any event, our research design is more credible for outcome *disparities* than for the *level* of outcomes, as the latter would be confounded by unobserved shocks to average outcomes in a state that are correlated with the timing of school finance reforms (Hanushek, Rivkin, and Taylor 1996a,b). For example, if SFRs follow negative shocks to mean student achievement,

this effect would be downward-biased. Another interpretation is that the marginal productivity of revenues is in fact higher in low-income districts.

The second panel shows impacts on the standard deviation or interquartile range of achievement within states, while the third and fourth panels present results by race and income, respectively. There is no discernible effect on achievement gaps by race or income or on the overall dispersion of test scores. Point estimates are all roughly a full order of magnitude smaller than the earlier estimates for district-level progressivity of mean scores.

Appendix Tables A6 and A7 resolve the discrepancy. While non-white, low-income, and low-scoring students are more likely than their white, higher-income, and higher-scoring peers to attend school in low-income school districts, the differences are not very large. Roughly one-quarter of non-white and low-scoring students, and one-third of low-income students, live in first-quintile districts, while about 10% of each live in fifth-quintile districts. This leaves little room for SFRs to substantially affect the relative resources to which the typical minority, low income, or low scoring student is exposed.

To assess this more carefully, we assigned each student the mean revenues for his/her district and estimated event study models for the black-white, income, or test score gap in these imputed revenues. Results, in Appendix Table A7, indicate that finance events raise relative per-pupil revenues in the average black student's school district by only \$195 (S.E. 164), in the average low-income student's district by \$23 (S.E. 195), in the average low-scoring student's district by 193 (S.E. 101). Even if funding was much *more* productive than the average effect implied by our analysis, the funding changes seen here would still not be enough to yield effects on black or low-income students' average test scores large enough to detect with our research design. Thus, while reforms aimed at low-income

districts appear to have been successful at raising resources and outcomes in these districts, we conclude that within-district changes would be necessary to have dramatic impacts on the average low-income, minority, or low-scoring *student*.

## **VII. Discussion**

After desegregation, school finance reform is perhaps the most important education policy change in the United States in the last half century. But while the effects of the early reforms on school finance have been well studied, there is little evidence about the finance effects of more recent “adequacy” reforms or about the effects of any of these reforms on student achievement. Our study presents new evidence on each of these questions.

We find that state-level school finance reforms enacted during the adequacy era markedly increased the progressivity of school spending. They did not accomplish this by “leveling down” school funding, but rather by increasing spending across the board, with larger increases in low-income districts. Using nationally representative data on student achievement, we find that this spending was productive: Reforms increased the absolute and relative achievement of students in low-income districts. Our estimates thus complement those of Jackson et al. (2016), who examine the long-run impacts of earlier school finance reforms and find substantial positive impacts on a variety of long-run outcomes.

The different time patterns of impacts on resources and on student outcomes, combined with the cumulative nature of the latter, prevents a simple instrumental variables interpretation of the reduced-form coefficients in terms of the achievement effect per dollar spent – it is not clear which years’ revenues are relevant to the accumulated



achievement of students tested  $r$  years after an event. To assess the magnitude of the impacts we estimate, we focus on estimated effects on student achievement ten years after an event. Because effects on school resources are stable in the years following events, these can be interpreted as the impact of a change in resources for every year of a student's career (through 8<sup>th</sup> grade). Nevertheless, the focus on the  $r=10$  estimate is arbitrary. We would obtain larger estimates of the achievement effect per dollar if we used impacts more than ten years after events, or smaller effects with a shorter window.

Our preferred estimates, based on the gradient of student achievement with respect to district income, indicate that an SFR raises achievement in a district with log average income one point below the state mean, relative to a district at the mean, by 0.1 standard deviations after ten years. Our finance estimates indicate that this district saw an increase in relative state aid of \$622 per pupil for each of those ten years, and an increase in total revenues of \$424 per pupil.

\$424 per pupil in spending each year from kindergarten through grade 8, discounted to the student's kindergarten year using a 3% rate, corresponds to a present discounted cost of \$3,400. Chetty et al. (2011) estimate that a 0.1 standard deviation increase in kindergarten test scores translates into increased earnings in adulthood with present value of \$5,350 per pupil. This implies a benefit-cost ratio of 1.5, even when only earnings impacts are counted as benefits.<sup>28</sup>

This ratio is not wholly robust. Our quintile analysis shows larger revenue effects, implying a benefit-cost ratio below one, while Jackson et al.'s (2016) study of the effects of

---

<sup>28</sup> The earnings effects of increases in 8<sup>th</sup> grade test scores are likely larger than those of increases in Kindergarten scores, so using estimates of the latter biases our benefit calculation downward. We do not count the cost of increased spending in grades 9-12, as we have no way to capture its benefits.

earlier finance reforms on students' adult outcomes implies much larger benefits per dollar than does our calculation. Thus, although these sorts of calculations are quite imprecise, the evidence appears to indicate that the spending enabled by finance reforms was cost-effective, even without accounting for beneficial distributional effects.

It is important to note that our research design is poorly suited to identifying the optimal allocation of school resources across expenditure categories, or to testing whether actual allocations are close to optimal. It allows us only to say that the average finance reform—which we interpret to involve roughly unconstrained increases in resources, though in some cases the additional funds were earmarked for particular programs or tied to other reforms—led to a productive (though perhaps not maximally productive) use of the funds.<sup>29</sup>

Our results thus show that money can and does matter in education, and complement similar results for the long-run impacts of school finance reforms from Jackson et al. (2016). School finance reforms are blunt tools, and some critics (Hanushek, 2006; Hoxby, 2001) have argued that they will be offset by changes in district or voter choices over tax rates or that funds will be spent so inefficiently as to be wasted. Our results do not support these claims. Courts and legislatures can evidently force improvements in school quality for students in low-income districts.

But there is an important caveat to this conclusion. As we discuss in Section VI, the average low-income student does not live in a particularly low-income district, so is not well targeted by a transfer of resources to the latter. Thus, we find that finance reforms

---

<sup>29</sup> Stronger school accountability may provide incentives to schools to allocate their resources more efficiently (Hanushek 2006). We investigated specifications that allowed for interactions between finance reform events and the state's accountability policy, but found no evidence for this.

reduced achievement gaps between high- and low-income school districts but did not have detectable effects on resource or achievement gaps between high- and low-income (or white and black) students. Attacking these gaps via school finance policies would require changing the allocation of resources *within* school districts, something that was not attempted by the reforms that we study.

## References

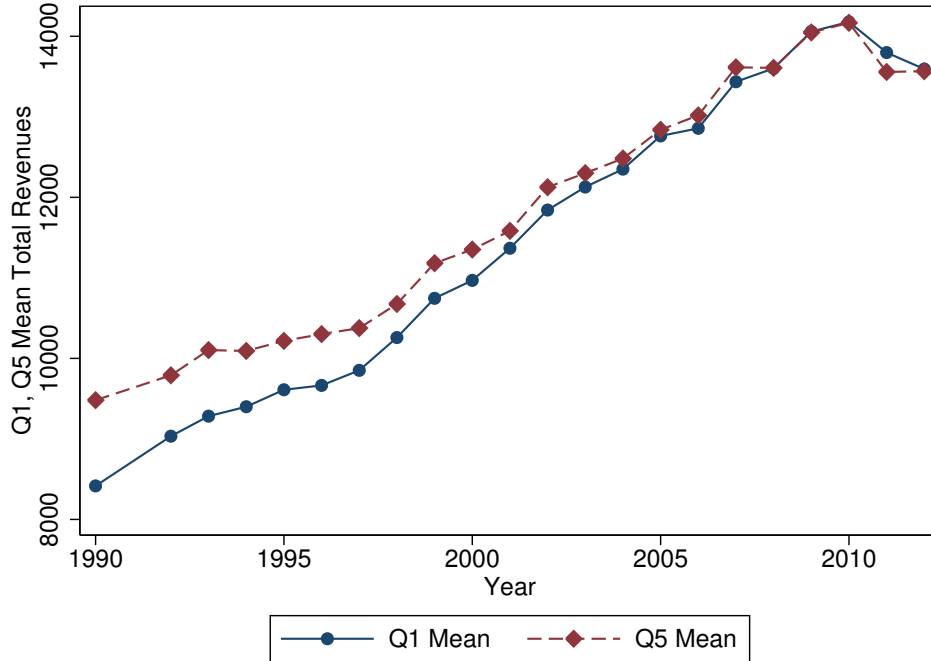
- Bai, J. (1997). Estimation of a change point in multiple regression models. *Review of Economics and Statistics*, 79(4), 551-563.
- Baker, B. D., & Green, P. C. (2015). Conceptions of equity and adequacy in school finance. In H. F. Ladd and M. E. Goertz, eds., *Handbook of Research in Education Finance and Policy*, 2<sup>nd</sup> edition. New York, NY: Routledge.
- Burtless, G. (1996). *Does Money Matter? The Effect of School Resources on Student Achievement and Adult Success*. Washington, D.C.: Brookings Institution Press.
- Card, D., & Krueger, A. B. (1992a). Does school quality matter? Returns to education and the characteristics of public schools in the United States. *Journal of Political Economy*, 100(1), 1-40.
- Card, D., & Krueger, A. B. (1992b). School quality and black-white relative earnings: A direct assessment. *Quarterly Journal of Economics*, 107(1), 151-200.
- Card, D.; Mas, A., & Rothstein, J. (2008). Tipping and the dynamics of segregation. *Quarterly Journal of Economics*, 123(1), 177-218.
- Card, D., & Payne, A. A. (2002). School finance reform, the distribution of school spending, and the distribution of student test scores. *Journal of Public Economics*, 83(1), 49-82.
- Cascio, E. U., Gordon, N., & Reber, S. (2013). Local responses to federal grants: evidence from the introduction of title I in the South. *American Economic Journal: Economic Policy*, 5(3), 126-159.
- Cascio, E. U., & Reber, S. (2013). The poverty gap in school spending following the introduction of Title I. *American Economic Review*, 103(3), 423-427.
- Cellini, S., Ferreira, F., & Rothstein, J. (2010). The value of school facility investments: Evidence from a dynamic regression discontinuity design. *Quarterly Journal of Economics* 125(1), 215-261.
- Chetty, R., Friedman, J. N., Hilger, N., Saez, E., Schanzenbach, D. W., & Yagan D. (2011). How does your Kindergarten classroom affect your earnings? Evidence from Project STAR. *Quarterly Journal of Economics*, 126(4), 1593-1660.
- Clark, M. A. (2003). Education reform, redistribution, and student achievement: Evidence from the Kentucky Education Reform Act. Unpublished working paper, Mathematica Policy Research, Princeton, NJ.
- Coleman, J. S., Campbell, E. Q., Hobson, C. J., McPartland, J., Mood, A. M., Weinfeld, F. D., & York, R. (1966). *Equality of Educational Opportunity*. Washington, DC, 1066-5684.

- Coons, J. E., Clune, W. H., & Sugarman, S. (1970). *Private Wealth and Public Education*. Cambridge, MA: Belknap Press.
- Corcoran, S. P., & Evans, W. N. (2015). Equity, adequacy, and the evolving state role in education finance. In H. F. Ladd and M. E. Goertz, eds., *Handbook of Research in Education Finance and Policy*, 2<sup>nd</sup> edition. New York: Routledge.
- Dee, T. S., & Jacob, B. (2011). The impact of No Child Left Behind on student achievement. *Journal of Policy Analysis and Management*, 30(3), 418-446.
- Downes, T., Stiefel, L. (2015). Measuring equity and adequacy in school finance. In H. F. Ladd & M.E. Goertz, eds., *Handbook of Research in Education Finance and Policy*, 2<sup>nd</sup> edition. New York, NY: Routledge.
- Duncombe, W.D., Nguyen-Hoang, P., & J. Yinger (2015). Measurement of cost differentials. In H. F. Ladd, & M.E. Goertz, eds., *Handbook of Research in Education Finance and Policy*, 2<sup>nd</sup> edition. New York, NY: Routledge.
- Dynarski, S., Hyman, J., & Schanzenbach, D. W. (2013). Experimental evidence on the effect of childhood investments on postsecondary attainment and degree completion. *Journal of Policy Analysis and Management*, 32(4), 692-717.
- Fischel, W.A. (1989). Did Serrano cause Proposition 13? *National Tax Journal* 42(4): 465-73.
- Flanagan, A. E., and Murray, S. E. (2004). A Decade of Reform: The Impact of School Reform in Kentucky. In J. Yinger, ed., *Helping Children Left Behind: State Aid and the Pursuit of Educational Equity* (pp. 165-213). Cambridge, MA: MIT Press.
- Guryan, J. (2001). *Does money matter? Regression-discontinuity estimates from education finance reform in Massachusetts*. National Bureau of Economic Research Working Paper No. 8269.
- Hanushek, E. A. (1986). The economics of schooling: Production and efficiency in public schools. *Journal of Economic Literature*, 24(3), 1141-1177.
- Hanushek, E. A. (1997). Assessing the effects of school resources on student performance: An update. *Educational Evaluation and Policy Analysis*, 19(2), 141-164.
- Hanushek, E. A. (2003). The failure of input-based schooling policies. *The Economic Journal*, 113, F64-F98.
- Hanushek, E. A. (2006). School resources. In E. A. Hanushek and F. Welch, eds., *Handbook of the Economics of Education*, vol. 2. Elsevier.
- Hanushek, E. A. & Lindseth, A. A. (2009). *Schoolhouses, Courthouses and Statehouses: Solving the Funding-Achievement Puzzle in America's Public Schools*. Princeton: Princeton University Press.
- Hanushek, E. A., Rivkin, S. G., & Taylor, L. L. (1996a). Aggregation and the estimated effects of school resources. *The Review of Economics and Statistics* 78(4), 611-627.
- Hanushek, E. A., Rivkin, S. G., & Taylor, L. L. (1996b). The identification of school resource effects. *Education Economics*, 4(2), 105-125.
- Horowitz, H. (1966). Unseparate but unequal: The emerging Fourteenth Amendment issue in public school education. *UCLA Law Review*, 13, 1147-1172.
- Hoxby, C. M. (2001). All school finance equalizations are not created equal. *The Quarterly Journal of Economics*, 116(4), 1189-1231.
- Hyman, J. (2013). Does money matter in the long run? Effects of school spending on educational attainment. Unpublished manuscript.

- Jackson, C. K., Johnson, R. C., & Persico, C. (2016). The effects of school spending on educational and economic outcomes: Evidence from school finance reforms. *Quarterly Journal of Economics* 131(1), 157-218.
- Kirp, D. L. (1968). The poor, the schools, and equal protection. *Harvard Educational Review* 38, 635-668.
- Koski, W. S., & Hahnel, J. (2015). The past, present and future of educational finance reform litigation. In H. F. Ladd and M. E. Goertz, eds., *Handbook of Research in Education Finance and Policy*, 2<sup>nd</sup> edition. New York: Routledge.
- Krueger, A. B. (1999). Experimental estimates of education production functions. *The Quarterly Journal of Economics*, 114(2), 497-532.
- Krueger, A. B. (2003). Economic considerations and class size. *The Economic Journal* 113, F34-F63.
- Krueger, A. B., & Whitmore, D. M. (2002). Would smaller classes help close the black-white achievement gap? In J. E. Chubb and T. Loveless, eds., *Bridging the Achievement Gap*. Washington: Brookings Institution Press.
- Ladd, H. F., & Goertz, M. E. (Eds.). (2015). *Handbook of Research in Education Finance and Policy*, 2<sup>nd</sup> Edition. New York, NY: Routledge.
- Levine, P. B., & Schanzenbach, D. (2009). The impact of children's public health insurance expansions on educational outcomes. *Forum for Health Economics & Policy*, 12(1), 1-26.
- Martorell, P., Stange, K. M., & McFarlin, I. (2015). Investing in schools: Capital spending, facility conditions, and student achievement. NBER Working Paper 21515, September.
- Murray, S. E., Evans, W. N., & Schwab, R. M. (1998). Education-finance reform and the distribution of education resources. *American Economic Review*, 88(4), 789-812.
- Nielson, C., & Zimmerman, S. (2014). The effect of school construction on test scores, school enrollment, and home prices. *Journal of Public Economics* 120.
- Sims, D. P. (2011a). Lifting all boats? Finance litigation, education resources, and student needs in the post-Rose era. *Education Finance and Policy*, 6(4), 455-485.
- Sims, D. P. (2011b). Suing for your supper? Resource allocation, teacher compensation and finance lawsuits. *Economics of Education Review*, 30(5), 1034-1044.
- Wise, A. (1967). *Rich Schools, Poor Schools: The Promise of Equal Educational Opportunity*. Chicago, IL: University of Chicago Press.

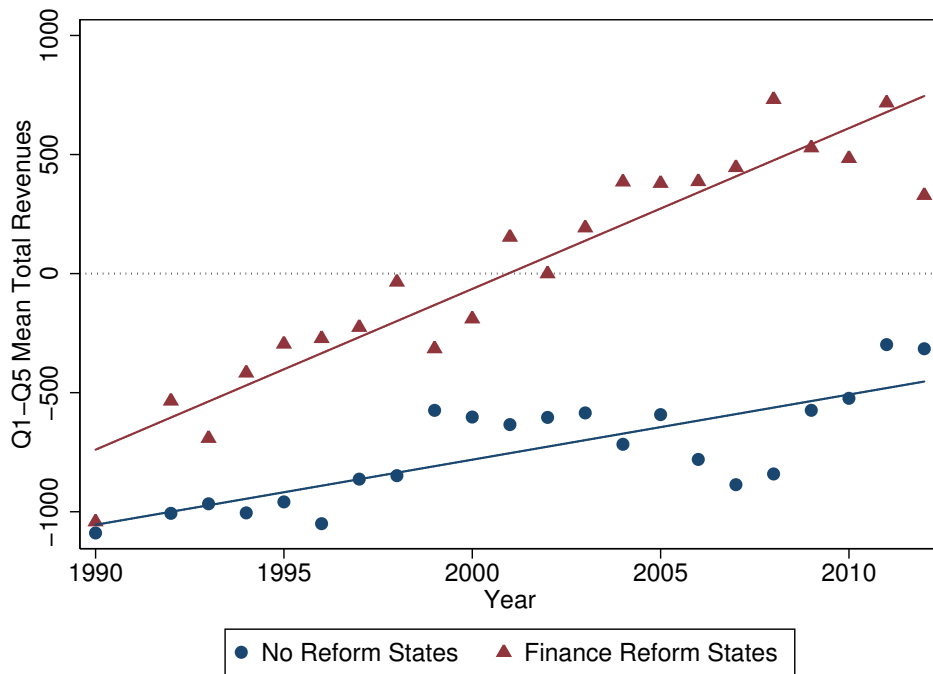
# Figures

Figure 1: Mean revenues per pupil for highest and lowest income school districts, 1990-2012



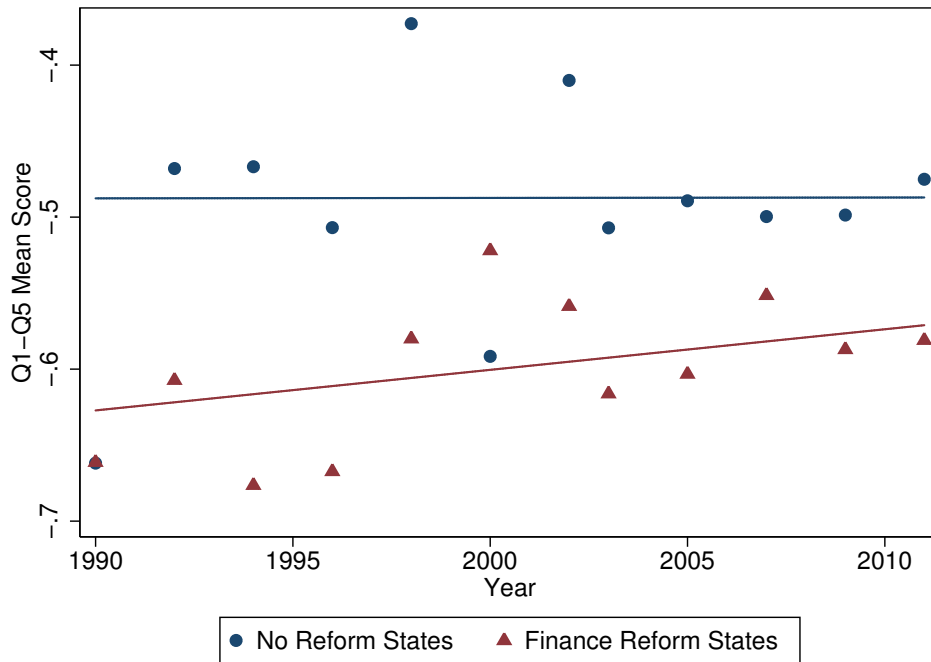
Notes: Highest (lowest) income districts are those in the top (bottom) 20% of their states' district-level distributions of mean household income in 1990, and are labeled as "Q5" and "Q1", respectively. See appendix for details of quintile classifications. Revenues are expressed in real 2013 dollars. Districts are averaged within states, weighing by log district enrollment; states are then averaged without weights. Hawaii and the District of Columbia are excluded.

Figure 2: Gap in revenues per pupil between lowest and highest income districts, by state finance reform status, 1990-2012



Notes: See notes to Figure 1. Finance reform states are those with school finance reforms between 1990 and 2011, as listed in Appendix Table A1. Lines show unweighted best linear fit to time series.

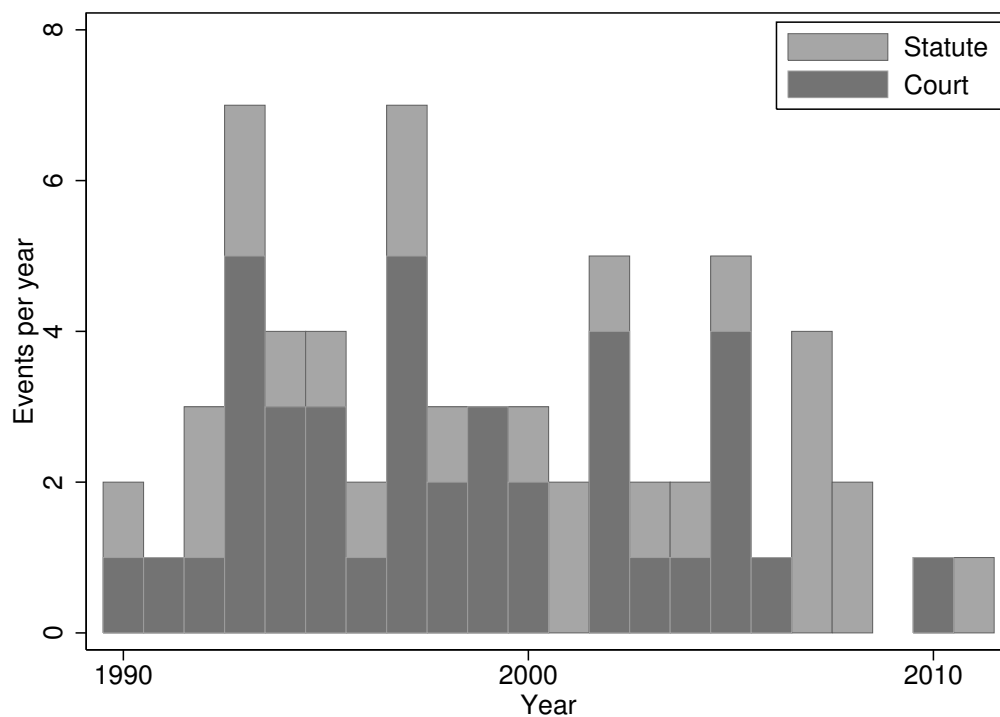
Figure 3: Gap in average test scores between lowest and highest income districts, by state finance reform status, 1990-2011



Notes: Lowest (Q1) and highest (Q5) income districts are defined as in Figure 1. NAEP observations in districts in each quintile are averaged, using NAEP sampling weights and separately for each grade and subject tested, and the Q1-Q5 difference is computed for each state. State-grade-subject Q1-Q5 differences are averaged separately for each group of states, weighting by the harmonic mean of the sum of the student weights in Q1 and Q5 districts. Lines show best linear fit to the time series.

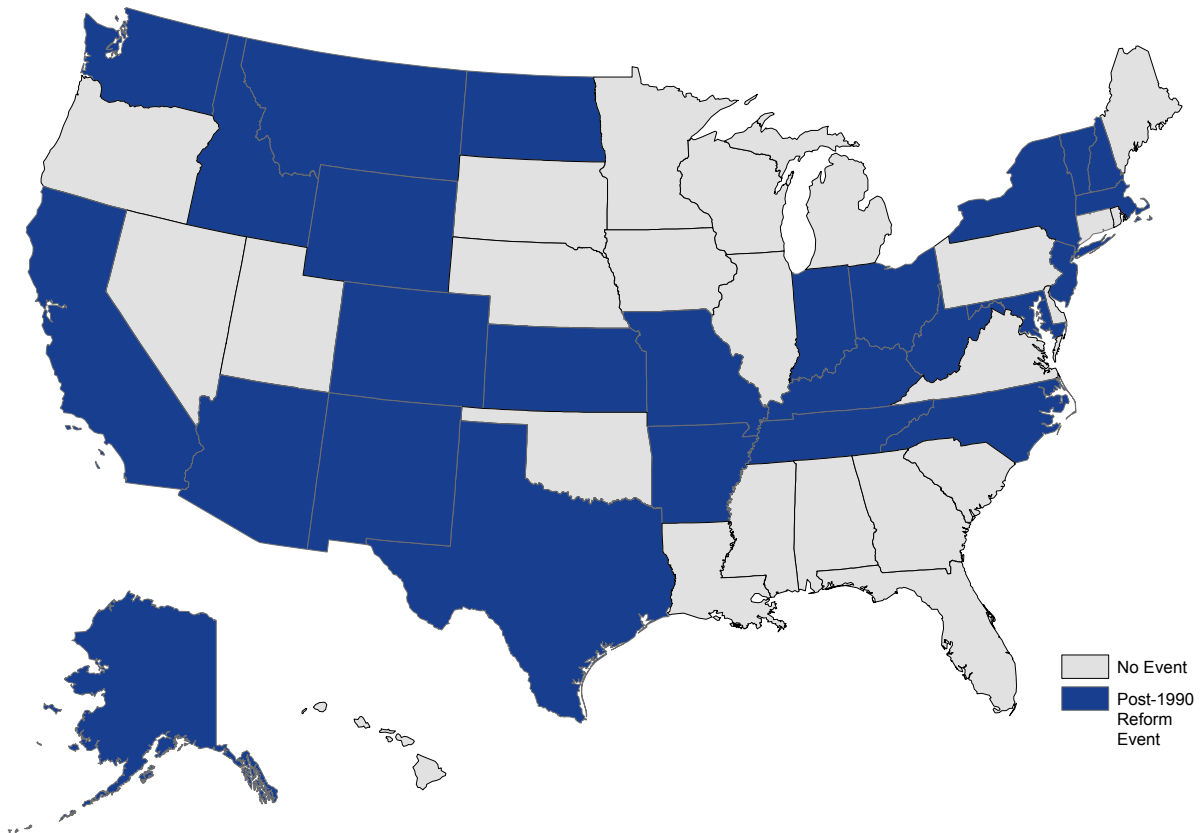


Figure 4: Timing of school finance events



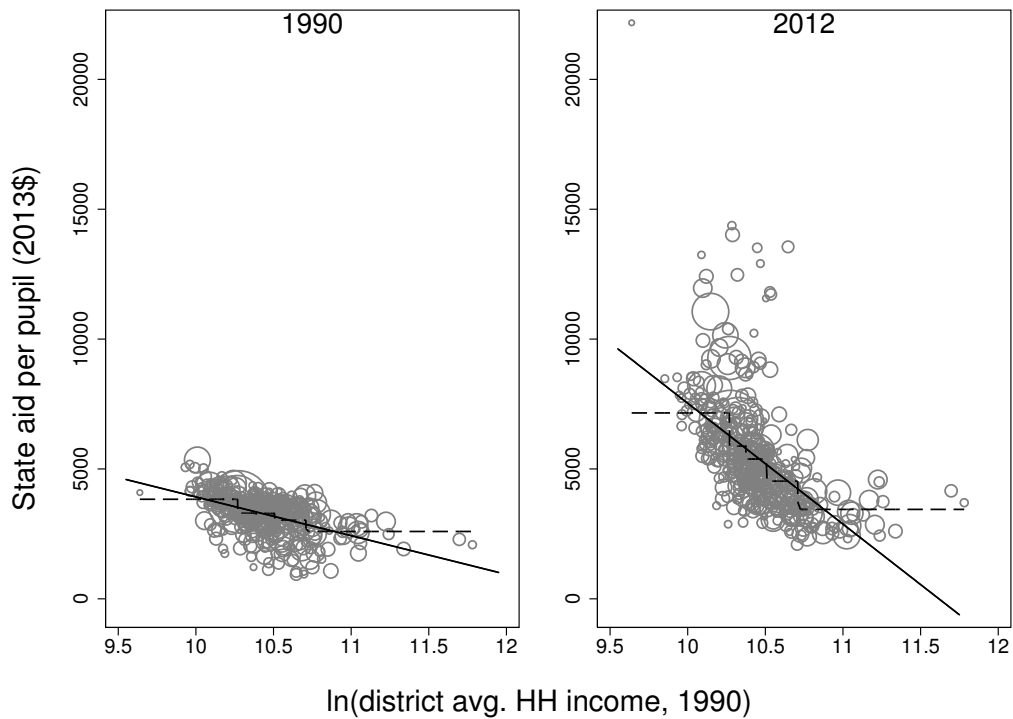
Notes: Each entry represents a state with a school finance reform event (a major court ruling and/or substantial statutory change) in a particular year. States may have multiple events. When states have multiple events in the same year, they are counted only once, as a court event if any of the events were court rulings and as a statute otherwise. Events are listed in Appendix Table A1.

Figure 5: Geographic distribution of post-1989 school finance events



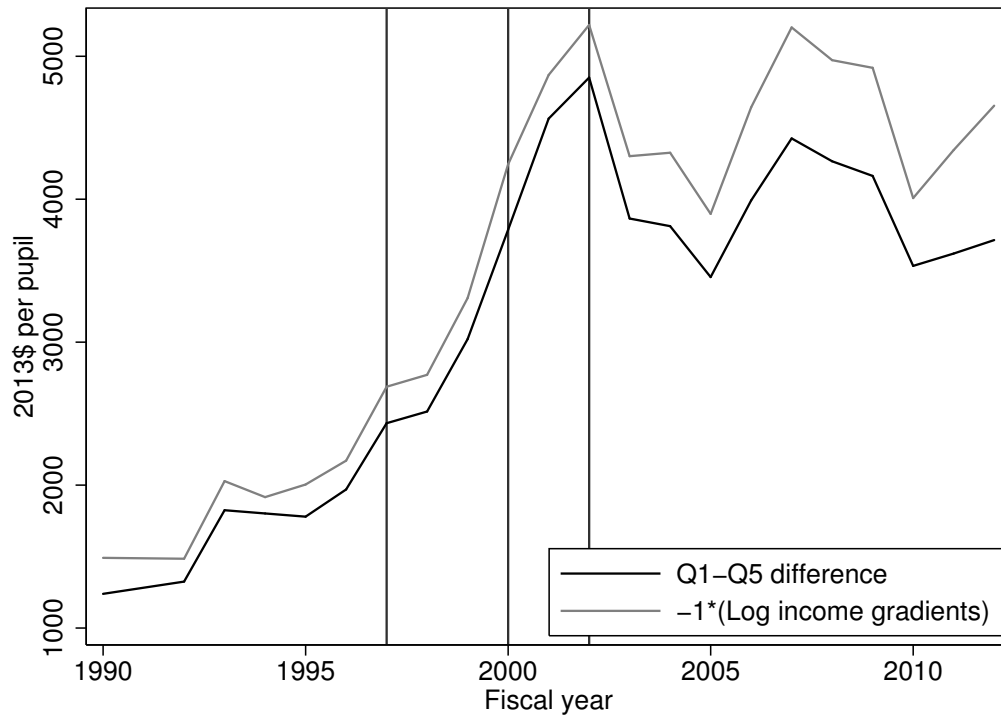
Notes: Map indicates states that had school finance reform events, as listed in Appendix Table A1, between 1990 and 2011.

Figure 6: State revenues per pupil vs. district income, Ohio, 1990 and 2012



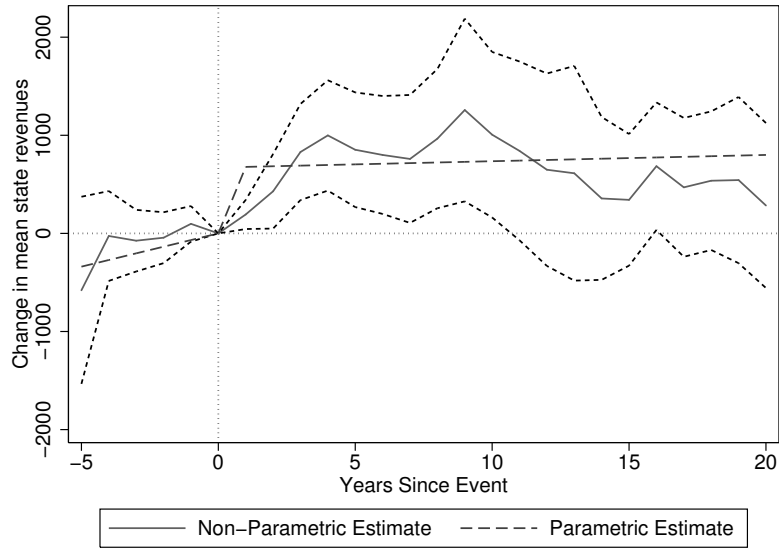
Notes: Each circle represents one district; size is proportional to average district enrollment over 1990-2012. Solid lines represent a regression of state revenue per pupil (2013\$) on log 1990 district mean household income, controlling for enrollment and district type (see footnote 16). Dashed lines represent means among districts in each quintile of the district mean income distribution.

Figure 7: Progressivity of state revenue distributions, Ohio, 1990-2012

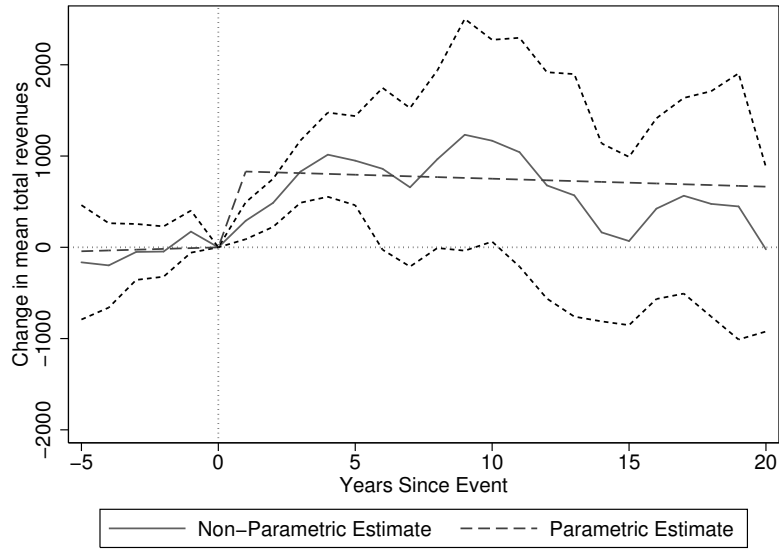


Notes: Dark line represents the difference in mean state revenue per pupil (2013\$) between the lowest (Q1) and highest (Q5) income districts in Ohio. Districts are classified based on 1990 mean household income and are weighted by log enrollment; see notes to Figure 1 for details. Lighter line represents regressions of state revenue per pupil on log mean income, controlling for enrollment and district type (see footnote 16); in this figure, coefficients are multiplied by -1 to facilitate comparisons. Solid vertical lines represent plaintiff victories in the Ohio Supreme Court in *De Rolph v State* I, II, and IV in 1997, 2000, and 2002.

Figure 8: Event study estimates of effects of school finance reforms on mean state and total revenues



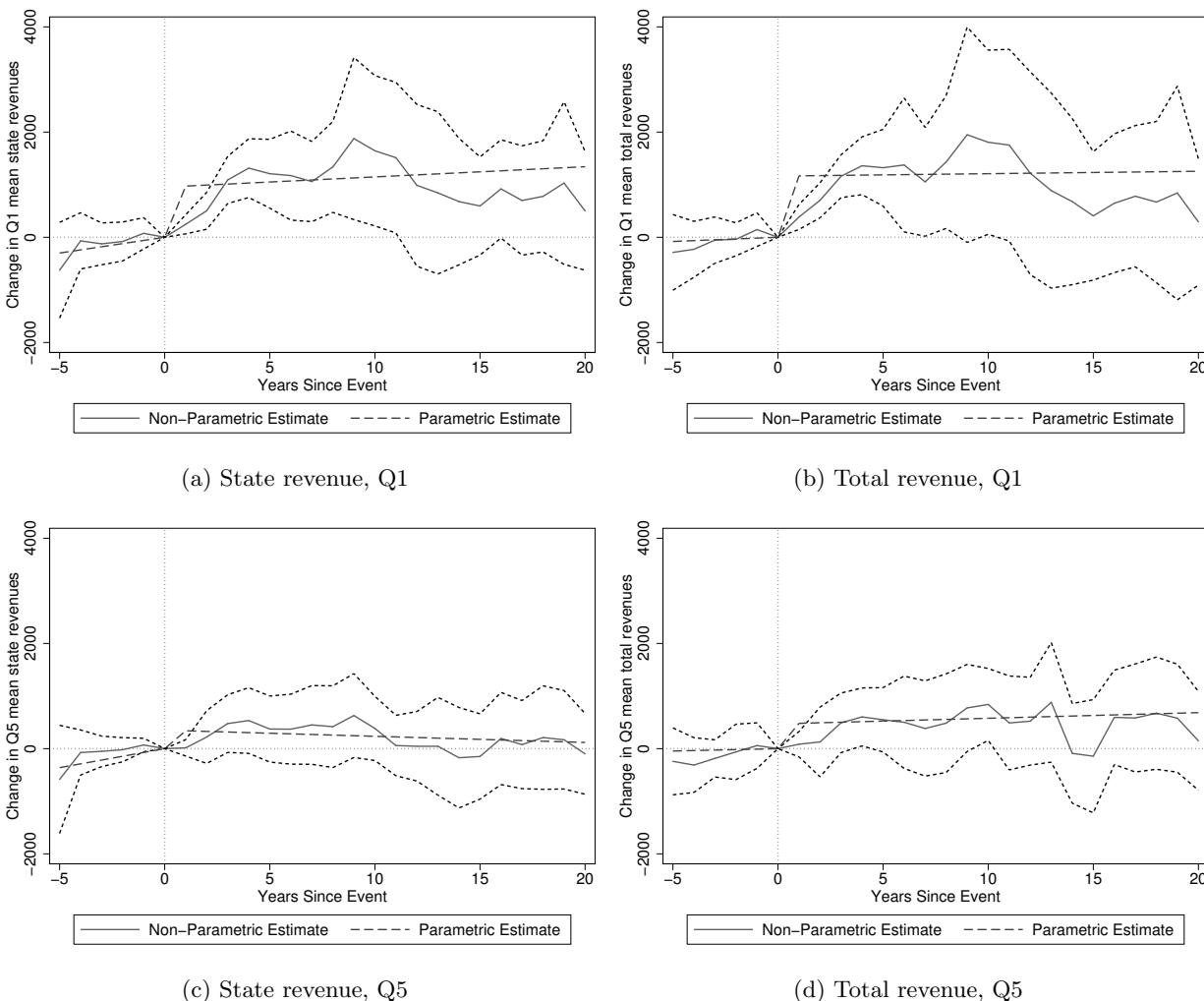
(a) State revenue



(b) Total revenue

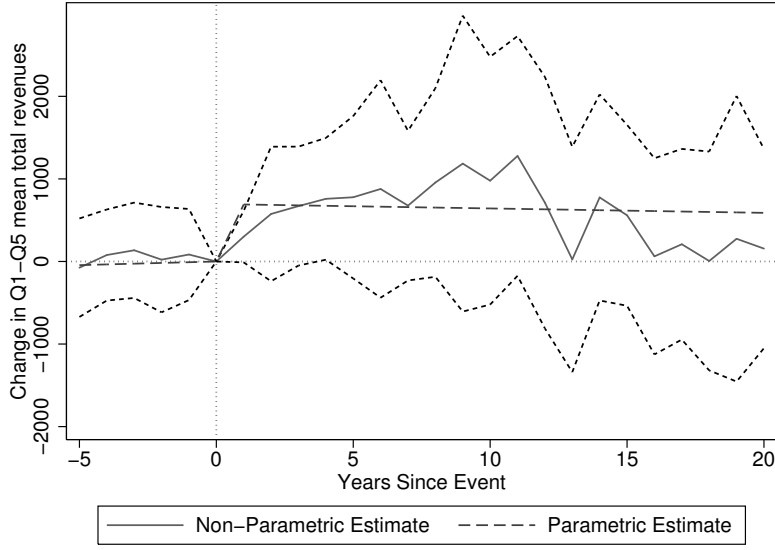
Notes: Figure displays coefficients from event study regressions, where the dependent variable is mean state (panel A) and total (panel B) revenues per pupil (2013\$) across all districts in a state. Dashed lines show the three-parameter parametric model (equation 2). Solid lines show the non-parametric model (equation 3), with the event year (indicated as 0) as the excluded category; dotted lines represent 95% confidence intervals. Estimates for the parametric models are reported in Table 3, Panel A, Columns 2 and 4. p values for omnibus hypothesis tests of zero pre- and post-event effects in the non-parametric model are 0.31 and  $<0.001$ , respectively, in Panel A, and 0.15 and  $<0.001$  in Panel B. In the parametric model, the p-value for the hypothesis that the pre-event trend is zero is 0.18 in Panel A and 0.79 in Panel B; for the test that the post-event jump and change in trend is zero it is 0.11 and 0.01, respectively.

Figure 9: Event study estimates of effects of school finance reforms on mean revenues in lowest and highest income districts

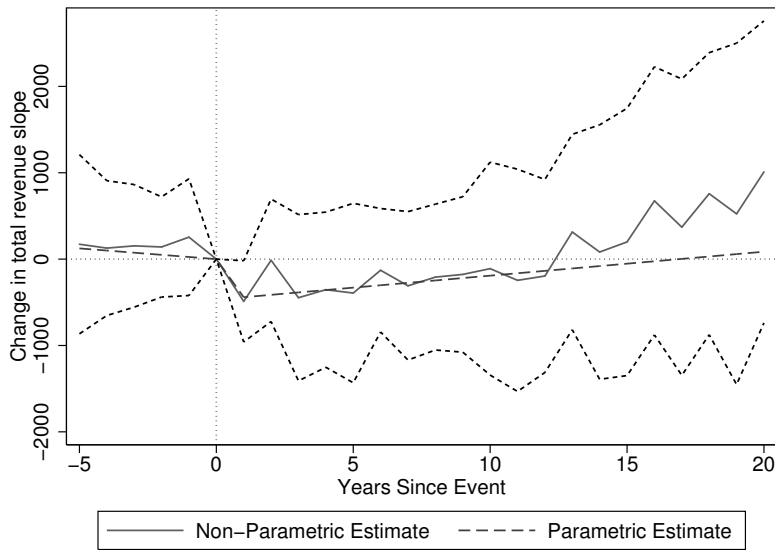


Notes: Figure displays coefficients from event study regressions. Dependent variables are mean state revenues in the lowest income quintile of districts (panel A), mean total revenues in these districts (panel B), and mean state and total revenues in the highest income quintile of districts (panels C and D, respectively), all measured in 2013 dollars per pupil. Dashed lines show the three-parameter parametric model (equation 2). Solid lines shows the non-parametric model (equation 3), with the event year (indicated as 0) as the excluded category; dotted lines represent 95% confidence intervals. Estimates for the parametric models are reported in Table 3, Panels B and C, Columns 2 and 4. p values for omnibus hypothesis tests of zero pre-event effects in the non-parametric model in Panels A-D are 0.53, 0.40, 0.41, and 0.74, respectively; p-values for zero post-event effects are <0.001 in all panels. In the parametric model, the p-values for the hypothesis that the pre-event trend is zero are 0.24, 0.68, 0.21, and 0.78; for the test that the post-event jump and change in trend is zero they are 0.01, <0.001, 0.30, and 0.22.

Figure 10: Event study estimates of effects of school finance reforms on progressivity of district revenues



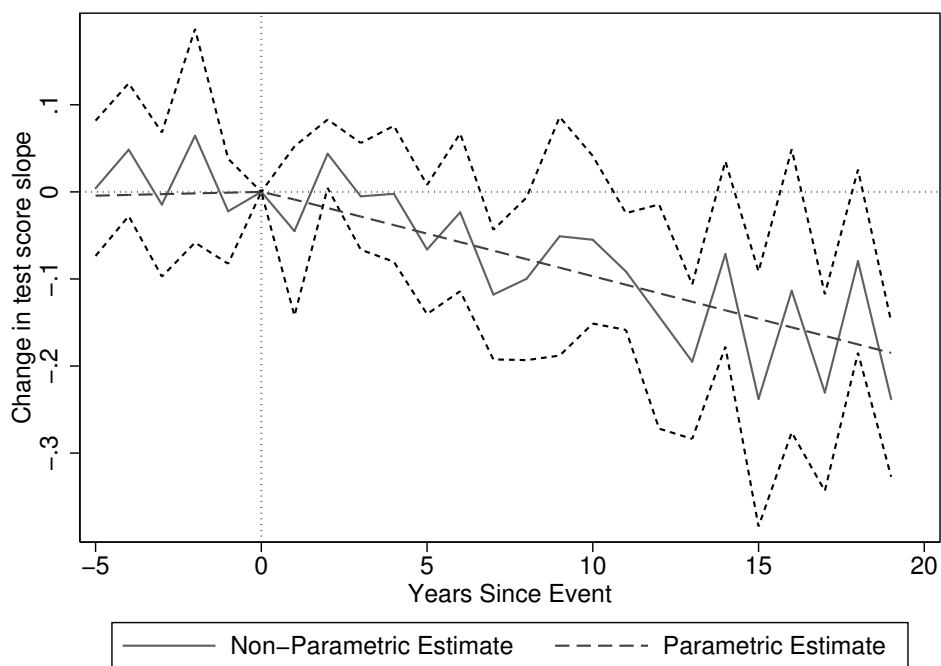
(a) Q1-Q5 mean



(b) Total revenue slope

Notes: Figure displays coefficients from event study regressions. Dependent variables are the difference in mean total revenues per pupil (in 2013\$) between districts in the bottom and top quintile by mean family income in the state (panel A), and the slope of total per-pupil revenues (in 2013\$) with respect to log mean family income, controlling for log enrollment and district type (panel B). Dashed lines show the three-parameter parametric model (equation 2). Solid lines shows the non-parametric model (equation 3), with the event year (indicated as 0) as the excluded category; dotted lines represent 95% confidence intervals. Estimates for the parametric models are reported in Table 4, Panels A and B, Columns 2 and 4. p-values for omnibus hypothesis tests of zero pre-event effects in the non-parametric model are 0.86 in Panel A and 0.96 in Panel B; p-values for zero post-event effects are <0.001 in each panel. In the parametric model, the p-value for the hypothesis that the pre-event trend is zero is 0.72 in Panel A and 0.58 in Panel B; for the test that the post-event jump and change in trend is zero it is 0.01 and 0.11, respectively.

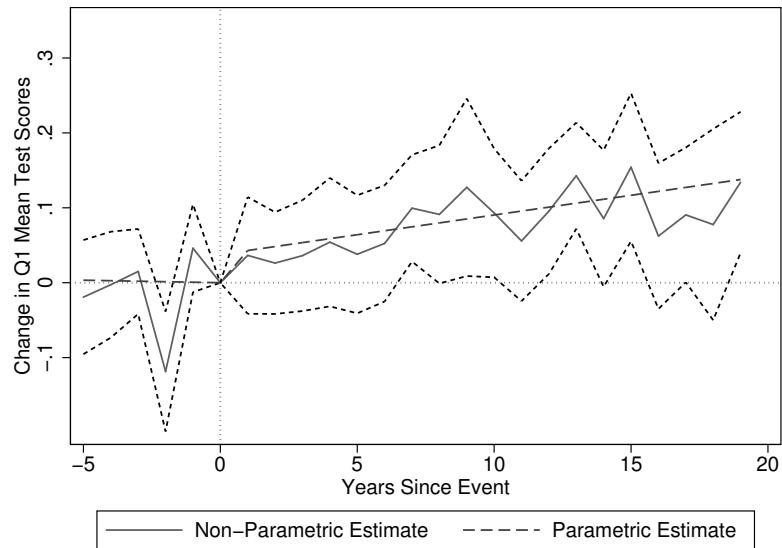
Figure 11: Event study estimates of effects of school finance reforms on progressivity of test scores



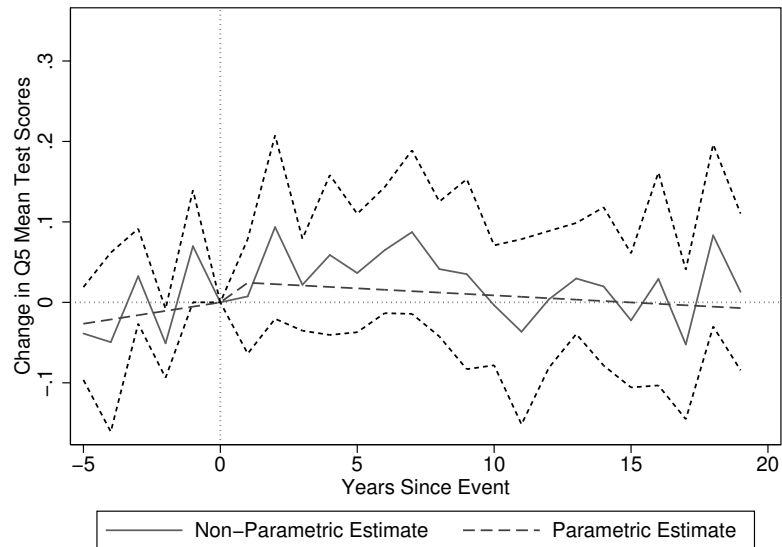
Notes: Figure displays coefficients from event study regressions. Dependent variable is the slope of mean test scores with respect to log mean family income, controlling for log enrollment. Dashed lines show the three-parameter parametric model (equation 2). Solid lines shows the non-parametric model (equation 3), with the event year (indicated as 0) as the excluded category; dotted lines represent 95% confidence intervals. Both event study regressions include state and subject-grade-year fixed effects. Estimates for the parametric models are reported in Table 6, Column 1. p-values for the hypothesis that pre-event effects are zero are 0.43 in the non-parametric model and 0.80 in the parametric model; for zero post-event effects, they are <0.001 and 0.02, respectively.



Figure 12: Event study estimates of effects of school finance reforms on mean test scores in highest and lowest income school districts



(a) Q1 mean test scores



(b) Q5 mean test scores

Notes: Figure displays coefficients from event study regressions. Dependent variables are mean test scores for students at districts in the bottom quintile (panel A) or top quintile (panel B) of the state's distribution of 1990 district mean household incomes. Dashed lines show the three-parameter parametric model (equation 2). Solid lines shows the non-parametric model (equation 3), with the event year (indicated as 0) as the excluded category; dotted lines represent 95% confidence intervals. Both event study regressions include state and subject-grade-year fixed effects. p-values for omnibus hypothesis tests of zero pre-event effects in the non-parametric model are 0.01 in Panel A and 0.02 in Panel B; p-values for zero post-event effects are  $<0.001$  in each panel. In the parametric model, the p-value for the hypothesis that the pre-event trend is zero is 0.86 in Panel A and 0.15 in Panel B; for the test that the post-event jump and change in trend is zero it is 0.01 and 0.25, respectively.

## Tables

Table 1: NAEP Testing Years

| Year | Subjects and grades covered |         |            |            | Number of States | Number of Students |
|------|-----------------------------|---------|------------|------------|------------------|--------------------|
|      | Math G4                     | Math G8 | Reading G4 | Reading G8 |                  |                    |
| 1990 |                             | X       |            |            | 38               | 97,900             |
| 1992 | X                           | X       | X          |            | 42               | 321,120            |
| 1994 |                             |         | X          |            | 41               | 104,890            |
| 1996 | X                           | X       |            |            | 45               | 228,980            |
| 1998 |                             |         | X          | X          | 41               | 206,810            |
| 2000 | X                           | X       |            |            | 42               | 201,110            |
| 2002 |                             |         | X          | X          | 51               | 270,230            |
| 2003 | X                           | X       | X          | X          | 51               | 691,360            |
| 2005 | X                           | X       | X          | X          | 51               | 674,420            |
| 2007 | X                           | X       | X          | X          | 51               | 711,360            |
| 2009 | X                           | X       | X          | X          | 51               | 775,060            |
| 2011 | X                           | X       | X          | X          | 51               | 749,250            |

Notes: In final column, students are cumulated across all tested subjects and grades, and rounded to the nearest 10.

Table 2: Summary statistics

(a) District-year panel

|                        | Overall |        |         | Mean by subgroup |        |
|------------------------|---------|--------|---------|------------------|--------|
|                        | N       | Mean   | SD      | Q1               | Q5     |
| Enrollment             | 229,386 | 67,523 | 181,811 | 13,537           | 31,403 |
| Log(mean income, 1990) | 223,334 | 10.53  | .2935   | 10.21            | 10.9   |
| Total revenue p.p.     | 229,386 | 11,087 | 3,489   | 10,809           | 11,871 |
| State                  | 229,386 | 5,135  | 2,291   | 6,371            | 4,003  |
| Local                  | 229,386 | 5,094  | 3,273   | 3,258            | 7,349  |
| Federal                | 229,386 | 858.2  | 641.4   | 1,180            | 518.4  |
| Expenditures p.p.      | 229,386 | 11,264 | 3,685   | 10,837           | 12,116 |
| Instructional          | 229,386 | 5,845  | 1,953   | 5,659            | 6,167  |
| Non-instructional      | 229,386 | 5,419  | 2,221   | 5,178            | 5,949  |
| NAEP scores            | 49,867  | .2559  | .4578   | .02925           | .5884  |

(b) State-year panel

|                        | N     | Q1     |       | Q5     |       | Q1-Q5 difference |       | Gradient |       |
|------------------------|-------|--------|-------|--------|-------|------------------|-------|----------|-------|
|                        |       | Mean   | SD    | Mean   | SD    | Mean             | SD    | Mean     | SD    |
| Log(mean income, 1990) | 49    | 10.2   | .135  | 10.8   | .234  | -.645            | .167  |          |       |
| Total revenue p.p.     | 1,078 | 11,527 | 3,905 | 11,844 | 3,351 | -329             | 2,158 | 539      | 3,574 |
| State                  | 1,078 | 6,552  | 2,822 | 4,347  | 2,006 | 2,196            | 2,244 | -3,086   | 3,470 |
| Local                  | 1,078 | 3,658  | 1,600 | 6,893  | 3,477 | -3,231           | 2,624 | 5,190    | 3,313 |
| Federal                | 1,078 | 1,317  | 1,082 | 604    | 482   | 706              | 722   | -1,565   | 1,532 |
| Mean NAEP score        | 532   | .0374  | .316  | .513   | .304  | -.475            | .326  | .955     | .337  |

Notes: Panel (a) reports summary statistics at the district by year level, weighted by district enrollment for the financial variables and by the sum of the student weights for the mean NAEP score. Panel (b) shows summary statistics for the unweighted state-year panel.

Table 3: Event study estimates of effects of school finance reforms on mean revenues per pupil, by district income

|                          | State Revenue     |                 | Total Revenue     |                   |
|--------------------------|-------------------|-----------------|-------------------|-------------------|
|                          | 1p                | 3p              | 1p                | 3p                |
| <b>Mean:</b>             |                   |                 |                   |                   |
| Post Event               | 912**<br>(359)    | 672**<br>(320)  | 829***<br>(302)   | 839***<br>(269)   |
| Trend                    |                   | 68<br>(50)      |                   | 9<br>(32)         |
| Post Event * Yrs Elapsed |                   | -61<br>(60)     |                   | -17<br>(52)       |
| Observations             | 1,078             | 1,078           | 1,078             | 1,078             |
| <b>Q1 Mean:</b>          |                   |                 |                   |                   |
| Post Event               | 1,225***<br>(343) | 954***<br>(302) | 1,233***<br>(370) | 1,164***<br>(287) |
| Trend                    |                   | 60<br>(50)      |                   | 16<br>(39)        |
| Post Event * Yrs Elapsed |                   | -40<br>(70)     |                   | -11<br>(70)       |
| Observations             | 1,078             | 1,078           | 1,078             | 1,078             |
| <b>Q5 Mean:</b>          |                   |                 |                   |                   |
| Post Event               | 527<br>(378)      | 351<br>(325)    | 544**<br>(277)    | 471*<br>(277)     |
| Trend                    |                   | 72<br>(56)      |                   | 9<br>(32)         |
| Post Event * Yrs Elapsed |                   | -84<br>(61)     |                   | 2<br>(41)         |
| Observations             | 1,076             | 1,076           | 1,076             | 1,076             |

Notes: Table reports estimates of the parametric event study models, equations (1) (columns 1 and 3) and (2) (columns 2 and 4). Dependent variables are mean state revenues per pupil (columns 1-2) and mean total revenues per pupil (columns 3-4), weighting districts by their log enrollment; each is computed separately for each state and year. In panel A, means are computed over all districts in each state; in panels B and C, they are computed over the bottom and top, respectively, quintiles of the states' district 1990 mean household income distributions. Event study regressions include state and year fixed effects, and are unweighted. Standard errors clustered at the state level.

Table 4: Event study estimates of effects of school finance reforms on progressivity of school finance

|                           | State Revenue    |                 | Total Revenue  |                 |
|---------------------------|------------------|-----------------|----------------|-----------------|
|                           | 1p               | 3p              | 1p             | 3p              |
| <b><i>Q1-Q5 Mean:</i></b> |                  |                 |                |                 |
| Post Event                | 711**<br>(316)   | 606***<br>(231) | 701**<br>(309) | 696***<br>(243) |
| Trend                     |                  | -10<br>(25)     |                | 9<br>(24)       |
| Post Event * Yrs Elapsed  |                  | 42<br>(36)      |                | -14<br>(44)     |
| Observations              | 1,076            | 1,076           | 1,076          | 1,076           |
| <b><i>Slopes:</i></b>     |                  |                 |                |                 |
| Post Event                | -622***<br>(223) | -522**<br>(209) | -424<br>(304)  | -469**<br>(233) |
| Trend                     |                  | -11<br>(25)     |                | -25<br>(45)     |
| Post Event * Yrs Elapsed  |                  | -5<br>(21)      |                | 53<br>(61)      |
| Observations              | 1,078            | 1,078           | 1,078          | 1,078           |

Notes: Table reports estimates of the parametric event study models, equations (1) (columns 1 and 3) and (2) (columns 2 and 4). In Panel A, dependent variable is the gap in state (columns 1-2) or total (columns 3-4) revenues per pupil between districts in the bottom and top quintiles of the states' district 1990 mean household income distributions. In Panel B, dependent variable is the coefficient from a district-level regression of the relevant per-pupil revenue measure on the log of the district's 1990 mean household income, controlling for district log enrollment and district type (elementary / secondary / unified) and weighting by the district's average log enrollment over time. Event study regressions include state and year fixed effects. Event study regressions are unweighted in Panel A, and is weighted by the inverse squared standard error of the dependent variable in Panel B. Standard errors clustered at the state level.

Table 5: Event study estimates of effects of school finance reforms on components of district finance

|                             | Mean of depvar | Mean               | Q1 Mean            | Q1-Q5 Mean     | Slope            |
|-----------------------------|----------------|--------------------|--------------------|----------------|------------------|
| <i>Revenue Effects:</i>     |                |                    |                    |                |                  |
| Total revenue               | 11,593         | 829***<br>(302)    | 1,233***<br>(370)  | 701**<br>(309) | -424<br>(304)    |
| State revenue               | 5,449          | 912**<br>(359)     | 1,225***<br>(343)  | 711**<br>(316) | -622***<br>(223) |
| Local revenue               | 5,238          | -146<br>(307)      | -126<br>(233)      | -126<br>(235)  | 90<br>(339)      |
| Federal revenue             | 907            | 63<br>(83)         | 134<br>(143)       | 116<br>(116)   | 34<br>(33)       |
| <i>Expenditure Effects:</i> |                |                    |                    |                |                  |
| Total expenditures          | 11,595         | 907***<br>(290)    | 1,377***<br>(367)  | 753**<br>(309) | -449<br>(309)    |
| Current instructional exp.  | 6,000          | 443***<br>(134)    | 604***<br>(155)    | 243*<br>(127)  | -161<br>(208)    |
| Teacher salaries + benefits | 5,533          | 339**<br>(153)     | 449***<br>(169)    | 143<br>(117)   | -103<br>(189)    |
| Mean teacher salary         | 63,425         | -286<br>(1,024)    | -245<br>(1,107)    | 272<br>(947)   | -259<br>(1,122)  |
| Pupil teacher ratio         | 15.40          | -0.62***<br>(0.19) | -0.67***<br>(0.19) | 0.00<br>(0.20) | 0.23<br>(0.17)   |
| Non-instructional exp       | 5,595          | 464**<br>(186)     | 773***<br>(257)    | 511**<br>(235) | -232<br>(176)    |
| Student support             | 3,426          | 221**<br>(102)     | 299**<br>(119)     | 100<br>(83)    | -81<br>(88)      |
| Total capital outlays       | 1,076          | 272**<br>(114)     | 486***<br>(177)    | 369**<br>(181) | -87<br>(78)      |
| Other current exp.          | 431.0          | 7.9<br>(12.4)      | 9.2<br>(14.5)      | -2.5<br>(13.3) | -2.9<br>(12.1)   |

Notes: Each entry in columns 2-5 represents the coefficient from a separate event study regression, using the one-parameter specification in equation (1). Dependent variables are constructed from district-level finance summaries indicated by row headings and expressed in per-pupil terms; means across districts are reported in column 1. Specifications correspond to columns 1 and 2 of Table 3, panels A (column 2) and B (column 3), and Table 4, panels A (column 4) and B (column 5). See notes to Tables 3 and 4.

Table 6: Event study estimates of effects of school finance reforms on student achievement

|                          | Slopes              |                      | Q1                 | Q5                | Q1-Q5              |                    |
|--------------------------|---------------------|----------------------|--------------------|-------------------|--------------------|--------------------|
|                          | (1)                 | (2)                  | (3)                | (4)               | (5)                | (6)                |
| Post Event * Yrs Elapsed | -0.011**<br>(0.004) | -0.010***<br>(0.003) | 0.007**<br>(0.003) | -0.001<br>(0.003) | 0.008**<br>(0.004) | 0.013**<br>(0.006) |
| Trend                    | 0.001<br>(0.003)    |                      |                    |                   |                    | -0.006<br>(0.005)  |
| Post Event               | 0.001<br>(0.023)    |                      |                    |                   |                    | 0.011<br>(0.024)   |
| Observations             | 1498                | 1498                 | 1509               | 1506              | 1504               | 1504               |
| p, total event effect=0  | 0.02                | 0.01                 | 0.02               | 0.69              | 0.04               | 0.07               |
| State FEs                | X                   | X                    | X                  | X                 | X                  | X                  |
| Sub-gr-yr FEs            | X                   | X                    | X                  | X                 | X                  | X                  |

Notes: Each column represents a separate event study regression, using specification (2) and, in columns 2-5, constraining  $\beta^{jump} = \beta^{trend} = 0$ . Dependent variable in columns 1-2 is the slope of test scores with respect to log mean 1990 income in the district, using NAEP weights and controlling for log district enrollment. In columns 3-4, dependent variable is the weighted mean score in districts in the bottom or top quintile, respectively, of the state district-level income distribution. In columns 5-6, dependent variable is the difference between the bottom and top quintiles. All are computed separately for each state-year-subject-grade cell with available data. All event study specifications include state and subject-grade-year fixed effects, and are weighted by the inverse squared standard error of the dependent variable. p-values for total event effect in columns 1 and 6 test the hypothesis that the  $\beta^{jump}$  and  $\beta^{phasein}$  coefficients are both zero; in columns 2-5, the p-value is for the hypothesis that  $\beta^{phasein} = 0$ , with  $\beta^{jump}$  constrained to zero.

Table 7: Event study estimates of effects of school finance reforms on student achievement by subject and grade

|                    | Test Score Slope     | Q1-Q5 Mean         |
|--------------------|----------------------|--------------------|
| Pooled             | -0.010***<br>(0.003) | 0.008**<br>(0.004) |
| <i>By Subject:</i> |                      |                    |
| Math               | -0.012***<br>(0.003) | 0.007*<br>(0.004)  |
| Reading            | -0.006<br>(0.005)    | 0.009**<br>(0.004) |
| Difference         | -0.006               | -0.002             |
| p-value            | 0.09                 | 0.46               |
| <i>By Grade:</i>   |                      |                    |
| G4                 | -0.010**<br>(0.005)  | 0.009*<br>(0.005)  |
| G8                 | -0.010**<br>(0.004)  | 0.007**<br>(0.004) |
| Difference         | 0.000                | 0.001              |
| p-value            | 0.93                 | 0.72               |

Notes: First row repeats specifications from Table 6, columns 2 and 5. See notes to that table for details. Subsequent models restrict the event study sample to slope and quintile gaps computed in specific subjects or grades. Difference entries report the difference in coefficients between math and reading or grade 4 and grade 8 specifications, with p-values for the hypothesis that the event study coefficient is equal in the two subsamples.



Table 8: Sensitivity of event study estimates to the treatment of states with multiple events

|                                   | Selected Events      | All events (stacked) | Initial court events |
|-----------------------------------|----------------------|----------------------|----------------------|
| <i>Panel A: Gradients</i>         |                      |                      |                      |
| State revenue p.p.                | -622***<br>(223)     | -479***<br>(160)     | -432*<br>(222)       |
| Total revenue p.p.                | -424<br>(304)        | -197<br>(269)        | -399<br>(292)        |
| NAEP scores                       | -0.010***<br>(0.003) | -0.009***<br>(0.003) | -0.009***<br>(0.003) |
| <i>Panel B: Q1-Q5 differences</i> |                      |                      |                      |
| State revenue p.p.                | 711**<br>(316)       | 463**<br>(191)       | 516<br>(354)         |
| Total revenue p.p.                | 701**<br>(309)       | 448**<br>(195)       | 584<br>(398)         |
| NAEP scores                       | 0.008**<br>(0.004)   | 0.011***<br>(0.004)  | 0.008**<br>(0.004)   |

Notes: Column 1 repeats estimates of the one-parameter parametric event study models from Table 4, columns 1 and 3, and Table 6, columns 2 and 5. See notes to those tables for details. In column 2, each potential event in each state is included, with a separate copy of the state's finance or test score panel for each event. Event study specification is modified to include state-by-event (-by-grade-by-subject) fixed effects; standard errors are clustered at the state level. Column 3 returns to the single-event specification, but uses the first post-1990 court order in each state as its event; states without judicial events are treated as not having finance reforms.

Table 9: Impacts of student sorting on student achievement results

|   | Q1-Q5 difference   | Slope                |
|---|--------------------|----------------------|
| Baseline Estimates                        | 0.008**<br>(0.004) | -0.010***<br>(0.003) |
| <i>Decomposition 1: Common covariates</i> |                    |                      |
| Predicted score                           | 0.003<br>(0.004)   | -0.003<br>(0.004)    |
| Residual score                            | 0.005**<br>(0.002) | -0.007**<br>(0.003)  |
| <i>Decomposition 2: Richer covariates</i> |                    |                      |
| Predicted score                           | 0.004<br>(0.004)   | -0.004<br>(0.003)    |
| Residual score                            | 0.004*<br>(0.002)  | -0.006***<br>(0.002) |

Notes: First row repeats estimates from Table 6, columns 2 and 5. In subsequent rows, dependent variables are modified. We estimate student-level regressions of NAEP scores on student demographic characteristics, with year fixed effects, then compute predicted and residual test scores. We compute separate slopes with respect to district income and quintile gaps for the predicted and residual test scores, and estimate separate event study regressions for each. In decomposition 1, student demographic characteristics are race/ethnicity and gender, along with school means (in the NAEP sample) of each. Decomposition 2 adds indicators for students whose parent is a college graduate and for free or reduced-price lunch receipt, along with indicators for NAEP samples where these variables are unavailable and school means of each.

Table 10: Event study estimates for mean NAEP scores by subgroup

|                                | Post Event * Yrs Elapsed |         |
|--------------------------------|--------------------------|---------|
| Overall mean                   | 0.004                    | (0.003) |
| <i>Spread of distribution:</i> |                          |         |
| Std Dev.                       | -0.000                   | (0.001) |
| 25th percentile                | 0.004                    | (0.003) |
| 75th percentile                | 0.003                    | (0.002) |
| P75 - P25                      | -0.001                   | (0.002) |
| <i>By race:</i>                |                          |         |
| Black                          | 0.001                    | (0.003) |
| White                          | 0.004*                   | (0.003) |
| White - black                  | 0.002                    | (0.002) |
| <i>By free lunch status:</i>   |                          |         |
| Free lunch                     | 0.001                    | (0.003) |
| No free lunch                  | 0.004                    | (0.003) |
| No free lunch - free lunch gap | -0.000                   | (0.002) |

Notes: Table reports event study specifications, using equation (3) with  $\beta^{jump}$  and  $\beta^{phasein}$  constrained to zero. Dependent variables are the indicated summaries of the state-level student achievement distribution: The mean score; the standard deviation of scores; the 25th and 75th percentile scores; the interquartile range; mean scores for black and white students, respectively; the white-black mean score gap; mean scores for free/reduced-price lunch and non-free/reduced-price lunch students; and the gap between these.

## APPENDICES

### Appendix A. Event database

Appendix Table A1 lists all of the events in our database, covering the period from 1990 forward. As noted in the text, we include both court orders and major legislative reforms. Columns of the table indicate how our list compares with those of Jackson, Johnson, and Persico (2016) and Corcoran and Evans (2015).

Appendix D, below, discusses in depth each case where our list differs from that of Jackson, Johnson, and Persico (2016).

### Appendix B. Details of samples and empirical specifications

The primary sources for our outcome measures are the Common Core of Data Local Education Agency (LEA) finance survey (also known as the F-33), for finance outcomes, and the NAEP, for test scores. Each is matched to district mean household income from the 1990 School District Data Book (SDDB), a tabulation of Decennial Census data at the district level. Mean incomes pertain to all households in the district, with and without children and without regard to public school attendance.

Our analysis relies on collapsing the district- and student-level measures to summaries at the state-by-year level. We use three types of summaries: Means for districts in each quintile of family income, the difference in between the first and fifth quintile means, and slopes with respect to log district income. Our methods differ slightly among these; we describe them here.

#### Sample definitions

All of our samples exclude Hawaii and the District of Columbia, each of which has only one school district.

Our finance analyses exclude district-year observations with enrollment of fewer than 100 students. This removes 8% of district-year observations, with only 0.1% of total enrollment.

We make two additional exclusions aimed at reducing volatility in the per-pupil funding measures. Both total funding and enrollment can vary dramatically from year to year in a district, particularly in small districts, creating enormous swings in per-pupil revenues. We view this variability as likely to reflect measurement error; it is particularly problematic when it derives from large proportional swings in enrollment with more stable funding.

We begin by computing each district's average enrollment over our sample, as well as its average growth rate over our sample period. We exclude from our sample any district-year observation with enrollment (a) more than double the district's average enrollment; (b) more than 15% above or below the prior year or the subsequent year's enrollment; or (c) more than 10% above or below the district's constant-growth-rate trend. In addition, for any district for which more than one-third of annual observations are excluded under these criteria, we exclude all remaining observations as well. Exclusion (a) in particular likely leads us to exclude districts serving newly developed areas, but we are not confident that 1990 incomes are reliable measures of population resources in these districts in any case. Together, these exclusions capture 18% of district-year observations, with 8% of enrollment.

To address volatility in the numerator of our revenue and expenditure measures, we exclude as well district-year observations with per-pupil revenues (respectively, expenditures) greater than 500% or less than 20% of the unweighted state-by-year mean. Only 0.02% of district-year observations are excluded by these rules.

When analyzing mean teacher salaries and pupil-teacher ratios, each of which is somewhat noisily measured, we exclude the top and bottom 2% of districts (unweighted) in each state-year cell.

Finally, our NAEP analyses exclude students in charter schools.

For many purposes, it is useful to have a weight for each district that does not vary over time. We use the geometric mean of the district's enrollment in all available years for this.

#### Definition of income quintiles

The basis for our income quintile calculations is the finance sample, as defined above. Districts' quintile assignments are treated as fixed over time.

To construct our income quintile cutoffs, we sort districts in a state by their 1990 mean family income and compute the 20<sup>th</sup>, 40<sup>th</sup>, 60<sup>th</sup>, and 80<sup>th</sup> percentile of the state distribution of 1990 mean family income. These percentiles are based on the districts in our finance sample in 1994 (the first year in which complete CCD data are available), weighted by our stable enrollment count. Districts spanning the quintile cutoffs are assigned with partial weights to each of the relevant quintiles.

#### Quintile means

Quintile means of our finance measures are computed as weighted averages over the districts in each quintile, weighting each district by its average log enrollment and including only districts that meet the criteria outlined above. The specific districts included can vary slightly over time due to differences in the availability of the dependent variable.

Our NAEP quintile means are similar but weight districts by the sum of the NAEP student weights in the district. Only districts meeting the finance sample restrictions for the relevant year are included.

### Income slopes

To construct state-by-year slopes of revenues with respect to district income, we estimate a separate regression for each state and each year. Explanatory variables are the log mean income of the district, based on the 1990 data, the district's log enrollment in that year, and indicators for whether the district is an elementary or a secondary district (unified districts are the excluded category). These regressions are weighted by our stable log enrollment measure and samples are defined as above. The coefficient on the log mean district income is extracted, along with its standard error.

NAEP score-income slopes are computed similarly, using NAEP data aggregated to the district-year-subject-grade level. Separate regressions are estimated for each state-year-subject-grade combination. The district-level regression is weighted by the sum of NAEP student weights in the district, and does not include district type controls. Standard errors account for the NAEP plausible values methodology, as discussed below.

### Event study regressions

Once quintile means, between-quintile gaps, and income slopes are constructed at the state-year level, we estimate event-study regressions as described in the main text.

For finance outcomes, where we have a census of school districts, the event study regressions using quintile means as dependent variables are unweighted. For test score outcomes, our quintile mean event study regressions are weighted by the sum of the NAEP student weights within the grade-subject-quintile-year cell. When we examine quintile gaps in scores, we weight by the harmonic mean of the two quintile weights.

All event studies with income slopes as the dependent variable are weighted by the inverse sampling variance of the state-year slope.

### NAEP plausible values

NAEP does not report a single test score for each student, but rather reports five plausible values, random draws from the student's posterior distribution. We average these five plausible values before computing quintile means or income slopes. Our estimated standard errors for the income slopes account for the

contribution of the sampling from the posterior distribution, following NAEP guidance.

Jacob and Rothstein (2016) point out that the use of NAEP plausible values as dependent variables may create biases, as the measurement error in PVs is not classical. The bias depends on the degree to which the “conditioning variables” in the NAEP model can predict the relevant explanatory variables in the research regression, but likely takes the form of attenuated treatment effects.

Jacob and Rothstein (2016) discuss methods for obtaining unbiased estimates from a single NAEP. We are not aware of methods for avoiding bias in analyses that pool across many NAEP samples. We have verified that cross-sectional regressions of NAEP PVs on measures of district finance, both across and within states, are minimally biased relative to unbiased MML estimates, and therefore conclude that the use of PVs is unlikely to meaningfully bias our results.

### **Appendix C. Robustness and additional analyses**

Appendix figures and tables present numerous additional results.

Figure A1 tabulates our finance and NAEP samples by event time, the number of years relative to the date of the event. In the NAEP data, we have large samples for event years up to 10, but beyond that sample sizes diminish.

Figure A2 shows the time series of total revenue slopes and test score slopes, each with respect to log district income, separately for reform and non-reform states. Both revenue and test score slopes decline in reform states, relative to non-reform states, between 1990 and 2011.

Figure A3 plots our event study estimates of impacts on total revenues and mean test scores in each of the five quintiles, along with 95% confidence intervals.

Figure A4 presents event study estimates, analogous to Figure 11, separately for 4<sup>th</sup> and 8<sup>th</sup> grade scores. There is no indication of meaningful differences between these. Figure A5 shows the event study for the between-quintile gap in mean test scores.

Table A1 lists all of the events in our finance reform database, along with those in the Jackson, Johnson, Persico (2016) and Corcoran and Evans (2015) databases. This is discussed in greater detail in Appendix D.

Table A2 presents an event study analysis for state-level budgets, on both per-capita and per-pupil bases. Our one-parameter specification (equation 1) is used. Events are associated with sharp increases in both total revenues and total expenditures. Expenditure increases are concentrated in the education and intergovernmental transfer categories; there is no significant effect on other expenditures. The impacts

on total per-pupil revenues and expenditures are larger than in our district-level analyses. This may indicate that some of the new state expenditures involve re-labeling existing funds rather than allocating new funds to education. Another potential explanation is that some reforms may have led to state spending on pre-K education that does not show up on district balance sheets.

Table A3 presents Card and Payne's (2002) analysis of the effect of SFRs on the slope of district revenues with respect to district income. Card and Payne use the income level, in dollars, rather than log income as the explanatory variable in this slope calculation. They compute a single long-difference of this slope for each state, from 1977 to 1992, and regress it on indicators for plaintiff and defense victories in court cases. We construct a similar slope with respect to income levels, and a similar 1990-2012 long difference. Columns 2 and 5 report regressions of this on an indicator for a post-1990 event. Columns 3 and 6 report estimates of our one-parameter event study model. Our estimates of the impacts of court rulings are somewhat larger than in Card and Payne (2002), but we cannot rule out equal effects.

Table A4 presents a similar comparison to Corcoran and Evans' (2015) analysis of the impact of SFRs on univariate measures of district finances in each state. Columns 1-3 are drawn from Corcoran and Evans. Column 1 reports coefficients of a regression of the indicated finance summary on an indicator for a prior court ruling, using Corcoran and Evans' 1972-2002 panel. This regression controls for state demographic characteristics and state and year effects. Columns 2 and 3 report ruling main effects (column 2) and the effect of an adequacy ruling (column 3) from specifications that include both together. Columns 4-5 report estimates using our 1990-2012 panel, without demographic controls, where we time events as in our main analysis (column 4) or to the first court ruling in a state (column 5).

Note that the coefficients in columns 4-5 are comparable to the sum of those in columns 2 and 3, or to those in column 1 without adjustment. Estimates for per-pupil revenues are similar. We obtain smaller impacts on log mean per-pupil expenditures and on the coefficient of variation of per-pupil expenditures.

Table A5 reports event study estimates where the dependent variable is the slope of various demographic characteristics of a district's students with respect to district log income (panel A) or the between-quintile gap in mean demographic characteristics (panel B). Log mean income is measured in 1990, 2000, and 2011. (The slope of log mean income in 1990 with respect to a district's 1990 log mean income is by construction 1 in every state, but this slope can vary in subsequent years.) Minority and free lunch shares are measured in every year, though free lunch data is missing for some states and years.

Table A6 reports the share of students of various characteristics who are in districts in each quintile. Rows sum to 1.



Table A7 reports event study regressions where the dependent variable is the difference in the revenues of the district attended by the average black (or free lunch, or low scoring) student and the revenues of the district attended by the average white (or non-free-lunch, or high scoring) student.

## **Appendix D. Reconciliation of school finance reform tabulations**

The literature on school finance reforms has been plagued by a lack of authoritative tabulations of court-ordered reforms, with substantial discrepancies between the tabulations used by different authors. Our tabulation, too, differs from all previous listings.

In an effort to provide clarity to the literature going forward, in this appendix we discuss every case between 1990 and 2011 where our tabulation of court-ordered school finance reforms differs from that of Jackson, Johnson, and Persico (2016; hereafter *JJP*). Many of these discrepancies reflect judgment calls. We have estimated our main results with a number of variants of the event sample, and in general have found little sensitivity of the results; we nevertheless present the basis for our preferred tabulation for completeness.

The states and years for which the two tabulations disagree are:

- Alabama, 1993
- Arizona, 2007
- Connecticut, 1995 & 2010
- Idaho, 1993 & 1998
- Maryland, 1996 & 2005
- Michigan, 1997
- Montana, 1993 & 2008
- New Hampshire, 2006
- New Jersey, 1991, 1998 & 2000
- New Mexico, 1998 & 1999
- Oregon, 2009
- South Carolina, 2005
- Texas, 2004
- Washington, 1991, 2007 & 2010

This includes only cases in scope for both lists but coded differently. This in particular means that we do not discuss our tabulation of legislative school finance reforms, as these are out of *JJP*'s scope. For each state, we discuss only the events where the two tabulations disagree; see Appendix Table A1 for a full listing of events in each state.

### **Alabama<sup>1</sup>**

---

<sup>1</sup> Case histories from <http://schoolfunding.info/2012/01/school-funding-cases-in-alabama/>; <http://www.encyclopediaofalabama.org/article/h-2045>.

1993: JJP court order; Lafortune-Rothstein-Schanzenbach (LRS) no event

In 1993's *Alabama Coalition for Equity (ACE) v. Hunt*, the public school funding system was found inequitable, on both adequacy and equity grounds, by a lower court, and a remedy order was issued. The remedy negotiated among the parties and ordered by the court, in *ACE v. Folsom*, included equitable and adequate funding, and in addition also covered performance-based education, professional development, early childhood programs, and inclusive special education— all to be fully funded within six years. No educational reform package made it through the legislature before the 1994 election season, and education reform became an important issue in the gubernatorial campaign, with incumbent governor Folsom promising reform and compliance with the remedy order and his opponent (and eventual winner) Forrest “Fob” James vowing to fight what he described as a usurpation of executive and legislative powers. Upon appeal, the Alabama Supreme Court decided in 1997 that while schools were inadequately funded, it would decline to issue a remedy order, leaving the funding system unchanged. Because the lower court was overturned and no school finance legislation was passed, we do not code this event as a school finance reform.

## **Arizona<sup>2</sup>**

2007: JJP court order; LRS no event

*Flores v. Arizona* was first decided in 1992 under Federal law, in the United States District Court for the District of Arizona. The plaintiffs claimed that the state failed to adequately fund programs for English language learners (ELLs). In 2000, the district court found that the state's method and level of funding ELL programs was "arbitrary and capricious" and ordered that the level of state funding for ELL programs bear a rational relationship to the cost of those programs. The parties reached an agreement in 2002, and the court ordered a costing-out study. The state's repeated failure to comply led to a December 2005 order and daily fines that mounted to \$21 million before the state enacted additional funding in early March 2006. In August 2006, the Ninth Circuit Court of Appeals, in *Flores v. Rzeslawski*, vacated the 2005 district court judgment and remanded the case so the district court could hold new hearings to determine whether circumstances had changed and required modification of the 2000 court order.

In March 2007 Judge Raner Collins of the U.S. District Court for the District of Arizona ruled that Arizona was in violation of the Equal Educational Opportunities Act (EEOA) by under-funding programs directed towards English learners, invalidating HB 2064, the funding formula passed by the Arizona legislature in response to the court's earlier decision. Judge Collins ordered the state to comply with the order by the end of the 2007 legislative session, but when the legislature

---

<sup>2</sup> Case history from <http://www.clearinghouse.net/detail.php?id=11194>; [http://www.schoolfunding.info/states/az/lit\\_az.php3](http://www.schoolfunding.info/states/az/lit_az.php3).

failed to do so the judge issued a contempt order. The Ninth Circuit Court of Appeals upheld the ruling in 2008.

In September 2008, the defendants petitioned the U.S. Supreme Court to review the 9th U.S. Circuit Court of Appeals' holding. In 2009's *Horne v. Flores*, 129 S. Ct. 2579 decision, the Supreme Court reversed and directed the District Court to examine several specific factors, including whether non-compliance was statewide.

On March 28, 2013, the plaintiff's statewide claims were dismissed, requiring district-by-district analysis instead. The dismissal was upheld by the Court of Appeals in June 2015.

Because the 2007 ruling was a Federal district court order that the state never complied with and was subsequently overturned by the Supreme Court, we do not code this event as a school finance reform.

### **Connecticut<sup>3</sup>**

1995: JJP court order; LRS no event

2010: JJP court order; LRS no event

In 1996, the State Supreme Court ruled in *Sheff v. O'Neill* (coded by JJP as 1995) that the separation of suburban and Hartford students violated the segregation clause in the Connecticut Constitution, and ordered the State Legislature to take necessary measures to integrate schools and to provide equal educational opportunity to all children. This resulted in a plan by the 1997 State Legislature geared at promoting voluntary school desegregation and magnet schools. Though plaintiffs made adequacy-based arguments, the ruling and subsequent legislation focused on desegregation and not school funding.

In 2010, the Supreme Court ruled in *Coalition for Justice in Education Funding, Inc. v. Rell* that the state's constitution guaranteed all students an adequate education. It did not order changes in school finance, however, but rather sent the case back to a trial court to determine whether the appropriate standard had been met. As of 2013, the case was still pending. We therefore do not code it as a school finance reform order.

### **Idaho<sup>4</sup>**

---

<sup>3</sup> Case history drawn from <https://www.jud.ct.gov/external/news/sheff.htm>; <http://connecticuthistory.org/sheff-v-oneill-settlements-target-educational-segregation-in-hartford/#sthash.6QnsSrbm.dpuf>; [https://scholar.google.com/scholar\\_case?case=10572221569547466633&q=Sheff+v+o+neill+199&hl=en&as\\_sdt=400006](https://scholar.google.com/scholar_case?case=10572221569547466633&q=Sheff+v+o+neill+199&hl=en&as_sdt=400006); <http://schoolfunding.info/2012/01/school-funding-cases-in-connecticut-2/>.

<sup>4</sup> Case history from <http://www.educationjustice.org/states/idaho.html>; [https://nces.ed.gov/edfin/pdf/lawsuits/ISEEO\\_v\\_idaho.pdf](https://nces.ed.gov/edfin/pdf/lawsuits/ISEEO_v_idaho.pdf).

1993: JJP no event; LRS court order  
1998: JJP court order; LRS no event

In the 1993 ruling on *Idaho Schools for Equal Educational Opportunity v. Evans* (ISEEO) (850 P.2d 724), the Idaho Supreme Court found that the state constitution required adequate (but not equitable) school spending. In 1994, the legislature passed Senate Bill 1560 which revised the state funding formula in regard to teacher salaries, allocating more than \$90 million to public schools fund this change. We code the 1993 decision as a court-ordered school finance reform.

After the legislative changes, the trial court declared the lawsuit moot, but this decision was overturned by the state Supreme Court, which concluded that whether a "thorough education" was being provided to students was still in question. In 1997, the trial court again dismissed the plaintiffs' claim. The state Supreme Court reversed in part in 1998, in *ISEEO v. State* (976 P.2d 913), remanding the facilities and capital funding portion of the case. The court held that "the Legislature has the duty to provide a means for school districts to fund facilities that offer a safe environment conducive to learning." In 2000 and 2001, the legislature passed minor facilities measures that help property-poor districts, but plaintiffs argued these measures were insufficient. We do not code this as an independent school finance reform, due in part to its limited scope.

### **Maryland<sup>5</sup>**

1996: JJP no event; LRS court order  
2005: JJP court order; LRS no event

The ACLU and Baltimore City alleged that Baltimore's students were not receiving an adequate education. In a 1996 summary judgment decision in the consolidated *Bradford v. Maryland State Board of Education* case, the trial court agreed, though the cause of the inadequacies was in dispute. The parties entered into a settlement that provided an increase in state funding for the Baltimore City Public Schools for the next five years. During this period, the "Thornton" Commission on Education Finance, Equity, and Excellence was established to address statewide adequacy in funding. We code the 1996 court order as a school finance reform, in part because Baltimore is such a large district.

In 2004, the Baltimore schools had an accumulated budget deficit of \$58 million. In response to a new state law requirement, it cut its budget drastically, and planned a two-year paydown of the deficit. The ACLU returned to court in *Bradford*, trying to restore funding to Baltimore schools and stop cuts to academic programs impacting students. The Circuit Court ruled that the budget cuts had resulted in reduced educational opportunity to students and that \$30 million to \$45 million in funds should be restored, preferably with additional revenue from the city and state. The

---

<sup>5</sup> Case history drawn from [http://www.schoolfunding.info/states/md/lit\\_md.php3](http://www.schoolfunding.info/states/md/lit_md.php3); [http://www.aclu-md.org/uploaded\\_files/0000/0173/bradford\\_summary.pdf](http://www.aclu-md.org/uploaded_files/0000/0173/bradford_summary.pdf).

State appealed, arguing that education funding levels are outside court jurisdiction. In 2005, Maryland's highest court ruled against the State's attempt to strike the lower court order, but did not overturn the state law for the deficit paydown. As a result, the additional funding awarded under the Thornton commission would proceed, but since no additional funds were ordered at this time we do not code this as a separate court ordered school finance reform.

### **Michigan<sup>6</sup>**

1997: JJP court order; LRS no event

*Durant v. State of Michigan* ("Durant I"), was filed in 1980 and decided in 1997. The major issue was state funding for special education mandates. In its ruling on *Durant I*, the Michigan Supreme Court unanimously held that state government had not properly financed three state-imposed mandates: special education, special education transportation and a school lunch program. The court split awarded monetary damages to local school districts to repay past costs of mandates. Due to the limited nature of the lawsuit, we do not code this as a school finance reform.

### **Montana<sup>7</sup>**

1993: JJP court order; LRS legislative event but no court order

2008: JJP court order; LRS no event

Montana's Supreme Court ruled in *Helena Elementary School District No. 1 v. State* in 1989 that the state's school finance system was unconstitutional. This is outside the scope of our sample. The legislature responded in 1989, then overhauled the formula again in 1993 via House Bill 667. Earlier that year, the *Montana Rural Education Association v. State* case was tried but not decided. Following the legislative action, but still in 1993, the state's First Judicial District Court for Lewis and Clark County ruled that the case was moot due to the new law. It permitted the plaintiffs to argue that the new law remained unconstitutional, but to our knowledge the case ended then. JJP code this as a court order; we code House Bill 667 as a legislative action, but do not code the case as a court order.

In 2005, in *Columbia Falls Elem. Sch. Dist. 6 v. State*, the trial court found that the state was not providing a "quality" education as mandated by the constitution, and

---

<sup>6</sup> Case history from <https://www.mackinac.org/8568>.

<sup>7</sup> Case history from <http://www.mqec.org/school-funding-history/>;  
<http://schoolfunding.info/2011/12/school-funding-cases-in-montana/>;  
<https://static1.squarespace.com/static/53ab63e1e4b0cb2b67560152/t/55ef5b40e4b064e46223df9f/1441749824419/CF-Decision-II.pdf>;  
[http://static1.squarespace.com/static/53ab63e1e4b0cb2b67560152/t/55ef3dcbe4b0adc4e323efbc/1441742283987/Rural\\_Ed\\_Assoc-v-State\\_District\\_Order\\_re\\_Mootness\\_Issue\\_1993.pdf](http://static1.squarespace.com/static/53ab63e1e4b0cb2b67560152/t/55ef3dcbe4b0adc4e323efbc/1441742283987/Rural_Ed_Assoc-v-State_District_Order_re_Mootness_Issue_1993.pdf);  
[http://leg.mt.gov/content/committees/interim/2005\\_2006/edu\\_local\\_gov/minutes/02242006exhibits/ELG02242006\\_ex5.pdf](http://leg.mt.gov/content/committees/interim/2005_2006/edu_local_gov/minutes/02242006exhibits/ELG02242006_ex5.pdf).

in particular it had violated the provision of the state constitution requiring the state to commit to preserve the cultural heritage of American Indians. JJP and LRS each code this as a court-ordered school finance reform. A subsequent 2007 legislative reform (which we code as a legislative event) made substantial changes to the school finance system in light of this ruling.

Suit was filed in 2008 seeking supplemental monetary relief to help districts avoid funding shortfalls in 2009. In December 2008, the district court declined to award any supplemental relief, so we do not code 2008 as a court-ordered school finance reform.

### **New Hampshire<sup>8</sup>**

*2006: JJP court order; LRS no event*

In September 2006 in *Londonderry School District v. State* the New Hampshire Supreme Court ordered the state to define a “constitutionally adequate education” by June 2007. After recounting the failure to establish this definition in several previous cases (both JJP and LRS code court orders in 1993, 1997, and 1999), the court concluded that it is willing to defer to the legislature one more time, and that “in the absence of action..., a judicial remedy is not only appropriate, but essential” in order to vindicate the constitutional rights of New Hampshire’s students.

In the 2006 decision, the Court ordered the State to define a “constitutionally adequate education” by the end of the 2007 legislative session, but deferred to the legislature for appropriate action. We code the 2008 legislative action but not the 2006 court order.

### **New Jersey<sup>9</sup>**

*1991: JJP court order; LRS no event*

*1998: JJP no event; LRS court order*

*2000: JJP no event; LRS court order*

New Jersey’s school finance litigation history is extremely complex, with a decades-long exchange between the legislature and the courts. There have been many, many rulings in the *Abbott v. Burke* case in particular. The court ruled in *Abbott II* in 1990 (counted by both JJP and LRS) that state funding statutes failed to ensure adequate

---

<sup>8</sup>Case history from <https://www.nhbar.org/publications/display-journal-issue.asp?id=365>.

<sup>9</sup> Case histories drawn from [http://www.schoolfunding.info/resource\\_center/legal\\_docs/New%20Jersey/Abbot%20Decisions/Abbott-SupremeCourt\\_May1997.PDF](http://www.schoolfunding.info/resource_center/legal_docs/New%20Jersey/Abbot%20Decisions/Abbott-SupremeCourt_May1997.PDF);  
[http://www.schoolfunding.info/resource\\_center/legal\\_docs/New%20Jersey/Abbot%20Decisions/Abbott-SupremeCourt-May-1998.PDF](http://www.schoolfunding.info/resource_center/legal_docs/New%20Jersey/Abbot%20Decisions/Abbott-SupremeCourt-May-1998.PDF);  
[http://www.schoolfunding.info/resource\\_center/legal\\_docs/New%20Jersey/Abbot%20Decisions/Abbott-SupremeCourt-Feb-2002.PDF](http://www.schoolfunding.info/resource_center/legal_docs/New%20Jersey/Abbot%20Decisions/Abbott-SupremeCourt-Feb-2002.PDF).

funding in the low-wealth “Abbott districts”, and noted that students in these districts need programs and services beyond those provided to students in wealthier districts. In response, the legislature passed the Quality of Education Act of 1990 (QEA; LRS code this as a legislative event).

In 1991, the plaintiffs applied to the court to declare the QEA unconstitutional. The court declined to hear the motion at that time. JJP code this as a court order, but we do not. The court did find the QEA unconstitutional in the 1994 *Abbott III* ruling; both JJP and LRS count this event.

In 1998’s *Abbott V* ruling, the court required the state to increase funding to ensure parity in per-pupil expenditures between the Abbott districts and the average of the state’s 110 successful suburban school districts, and directed the state to conduct a study to determine the needs of Abbott students and the programs necessary to meet those needs. Based on the State’s study, the court ordered additional remedial measures for the Abbott children, including preschool for all three- and four-year olds, adequate school facilities, and “supplemental” programs. We code this as a school finance reform, though JJP do not.

After plaintiffs brought another motion alleging the state did not comply with the *Abbott V* ruling, the court provided (in the 2000 *Abbott VI* ruling) more detail on the preschool requirements, including substantive educational standards, certified staff, and a maximum student/teacher ratio of 15:1. We code this as a school finance reform; again, JJP do not.

### **New Mexico<sup>10</sup>**

1998: JJP court order; LRS no event

1999: JJP no event; LRS court order

In 1998, a number of districts brought a capital funding/facilities suit, *Zuni School District v. State*, CV-98-14-II (Dist. Ct., McKinley County Oct. 14, 1999), claiming that the funding system for capital items was unconstitutional. The trial court granted partial summary judgment in favor of plaintiffs and ordered the state to “establish and implement a uniform funding system for capital improvements . . . and for correcting existing past inequities.”

The case was filed in 1998 but decided in 1999. JJP code it as a 1998 event, but we code it as a 1999 event based on the decision date.

### **Oregon<sup>11</sup>**

2009: JJP court order; LRS no event

---

<sup>10</sup> Case history from [http://www.schoolfunding.info/states/nm/lit\\_nm.php3](http://www.schoolfunding.info/states/nm/lit_nm.php3);

[https://nces.ed.gov/edfin/pdf/lawsuits/Zuni\\_v\\_%20nm.pdf](https://nces.ed.gov/edfin/pdf/lawsuits/Zuni_v_%20nm.pdf);

[http://ielp.rutgers.edu/resources/New\\_Mexico](http://ielp.rutgers.edu/resources/New_Mexico).

<sup>11</sup> Case history from <http://www.educationjustice.org/states/oregon.html>.

In January 2009, the Oregon Supreme Court found in *Pendleton School District 16R v. State* that the legislature had, in violation of a 2000 constitutional amendment, failed to fund the Oregon public school system at a level sufficient to meet the quality education goals established by law. However, it concluded that the state constitution did not give the court authority to issue an injunction requiring the state to provide sufficient funding to reach those goals. Because the court ruled that the law was not judicially enforceable, and no subsequent legislative actions were taken, we do not code this event as a school finance reform.

### **South Carolina<sup>12</sup>**

*2005: JJP court order; LRS no event*

In 1999, in *Abbeville County Sch. Dist. v. State*, the South Carolina Supreme Court held that plaintiffs had a valid claim under the state constitution's education clause, interpreted the clause to mean that the legislature must provide children with a "minimally adequate education," and remanded the case for trial. The lower court ruled in 2005 that the state's failed to meet its constitutional requirement by inadequately providing early education programs, but ruled against plaintiff claims requesting relief regarding school buildings and quality teaching. Because the court did not order substantial school finance reform, we do not code a 2005 event.

Both plaintiffs and defendants appealed to the South Carolina Supreme Court, which heard oral argument in 2008 and again in 2012. In 2014, the state supreme court held the state's school funding unconstitutional, declaring that "South Carolina's education funding scheme is a fractured formula denying students ... the constitutionally required opportunity." The court explained that the resources provided failed to produce sufficient educational opportunities. The court explicitly refrained from mandating how the state should remedy the system, but ordered the parties to work together to present a new funding system to the court "within a reasonable time." The 2014 court order meets our definition of a court-ordered school finance reform, but is outside of our sample period so is not included in our tabulation (or in JJP's).

### **Texas<sup>13</sup>**

*2004: JJP court order; LRS no event.*

A trial court found in *West Orange-Cove Consolidated ISD v. Nelson* (2004) that the Texas school finance system failed to provide "an adequate, suitable and efficient education system" as required by the state constitution, and additionally found the state property tax to be unconstitutional.

---

<sup>12</sup> Case history from <http://www.educationjustice.org/states/southcarolina.html>.

<sup>13</sup> Case history from <http://caselaw.findlaw.com/tx-supreme-court/1153227.html>; <http://www.schoolfunding.info/states/tx/McCown.pdf>.



In 2005, the state Supreme Court ruled in *Neeley v. West Orange-Cove Indep. Sch. Dist.* that the state property tax was unconstitutional, but held that despite funding inequities the state's education finance system did not violate the constitutional adequacy, efficiency, and suitability requirements. The court wrote that the school finance system displayed deficiencies that could in time render it unconstitutional under the education article. Because the supreme court did not order reform's, we do not include this case.

#### **Washington<sup>14</sup>**

1991: JJP court order; LRS no event

2007: JJP court order; LRS no event

2010: JJP no event; LRS court order

*Seattle School District v. State*, also known as *Seattle II*, was a 1983 trial court ruling following up on the 1978 *Seattle I* decision that prompted an overhaul of the school finance system and the introduction of the Basic Education Act. *Seattle II* expanded the definition of "basic education" in the state to include special education, and bilingual and remedial programs. The state did not appeal, and the legislature amended the school finance system to include funding for these programs. JJP date this case to 1991. To our knowledge, it occurred in 1983, so does not fall into our sample period.

In *Federal Way Sch. Dist. v. State*, filed in 2006, plaintiffs alleged that the state funding system failed to amply fund education in all school districts and was unconstitutional. In 2007, Judge Michael Heavey held in favor of plaintiffs, finding that the State's method of providing salary funding was unconstitutional. The state Supreme Court, however, issued a narrower ruling in 2009 that a "uniform system" of education governs educational content, teacher certification, instructional hour requirements and the assessment system, but does not require uniform funding of staff salaries. The court did not rule on whether the plaintiffs had "ample" funds under the state constitution. Because the 2009 Supreme Court ruling did not involve finances, we do not code this as an event.

*McCleary v. State*, filed in 2007, argued that although the state had developed standards for a constitutional "basic education," it was not fully funding that education. In 2010, the Superior Court held that the state funding system was unconstitutional because it neither determined the cost of nor provided the resources needed for a basic education for all children in the state. The court ordered the state to fund a constitutionally adequate education, using stable and

---

<sup>14</sup> Case history drawn from

<https://www.courts.wa.gov/opinions/pdf/843627.opn.pdf>;

<http://digitalcommons.law.seattleu.edu/cgi/viewcontent.cgi?article=2290&context=sulr>;

<https://www.courts.wa.gov/opinions/pdf/843627.opn.pdf>;

[http://www.schoolfunding.info/states/wa/lit\\_wa.php3](http://www.schoolfunding.info/states/wa/lit_wa.php3).

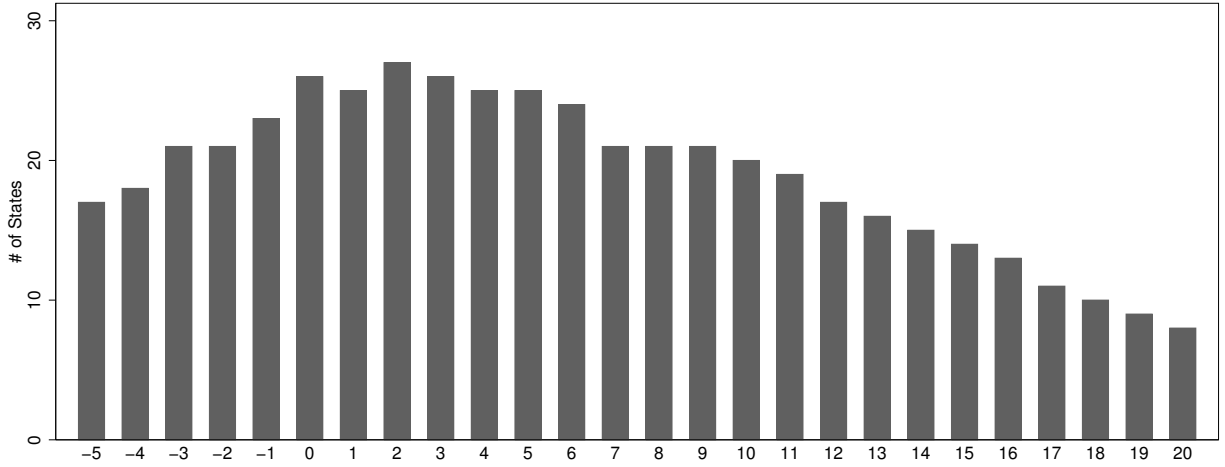
dependable state sources. In response, the legislature enacted legislative reforms, and in early 2012 the Washington Supreme Court affirmed the Superior Court ruling. We code the 2010 event, as the legislature acted on it without waiting for it to be upheld by the Supreme Court.

## References

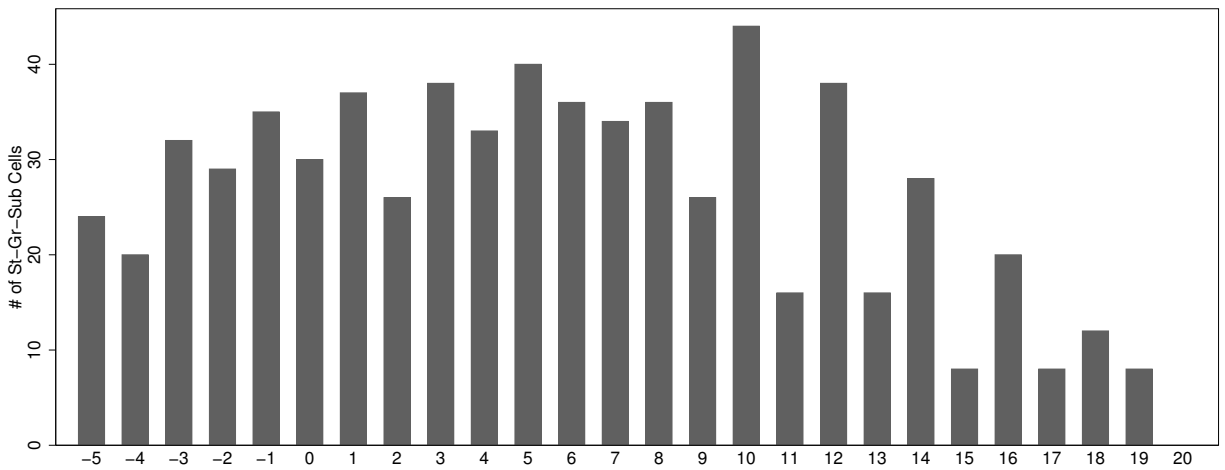
- Corcoran, S. P., & Evans, W. N. (2015). Equity, adequacy, and the evolving state role in education finance. In H. F. Ladd and M. E. Goertz, eds., *Handbook of Research in Education Finance and Policy*, 2<sup>nd</sup> edition. New York: Routledge.
- Jackson, C. K., Johnson, R. C., & Persico, C. (2016). The effects of school spending on educational and economic outcomes: Evidence from school finance reforms. *Quarterly Journal of Economics* 131(1), 157-218.
- Jacob, B. & Rothstein, J. (2016). The measurement of student ability in modern assessment systems. *Journal of Economic Perspectives*, forthcoming.

## Appendix Figures

Figure A1: Event time balance



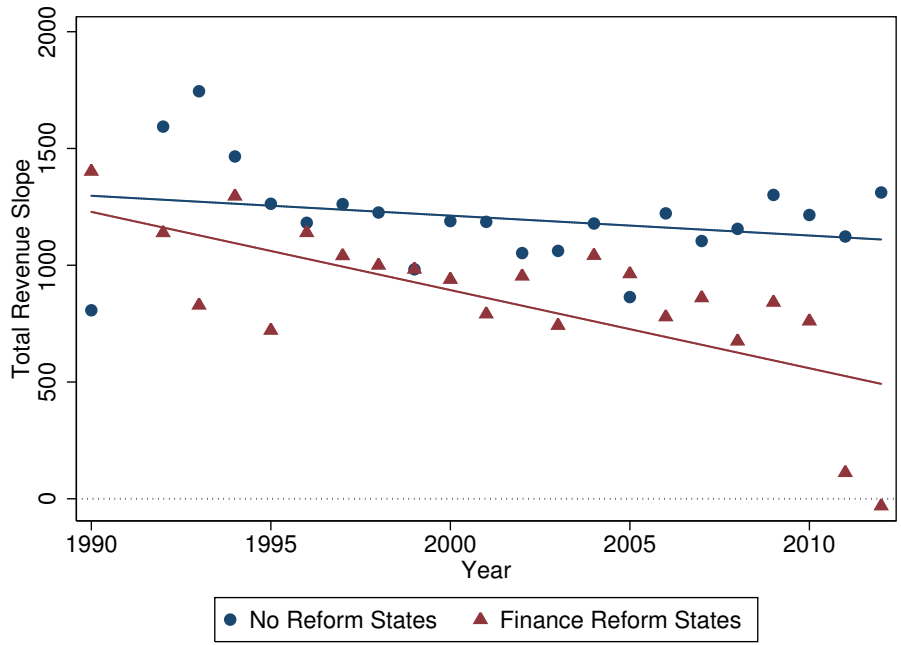
(a) Finance (# of states)



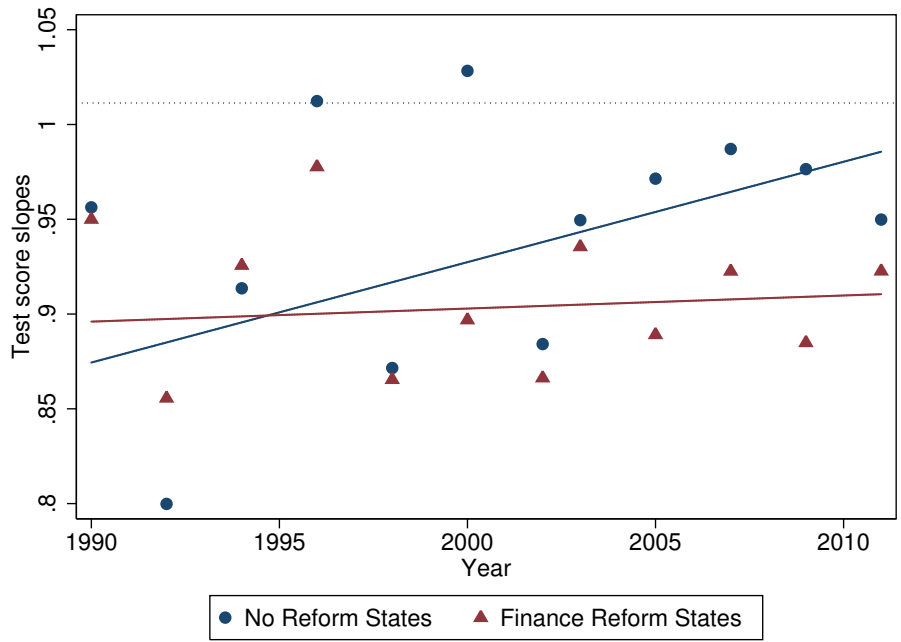
(b) NAEP (# of state-grade-subject cells)

Notes: Figure shows the number of state-year (panel A) or state-subject-grade-year (panel B) observations used in our event study samples, for each year relative to the focal event.

Figure A2: Slopes of revenues per pupil with respect to log district mean income, by state finance reform status, 1990-2012



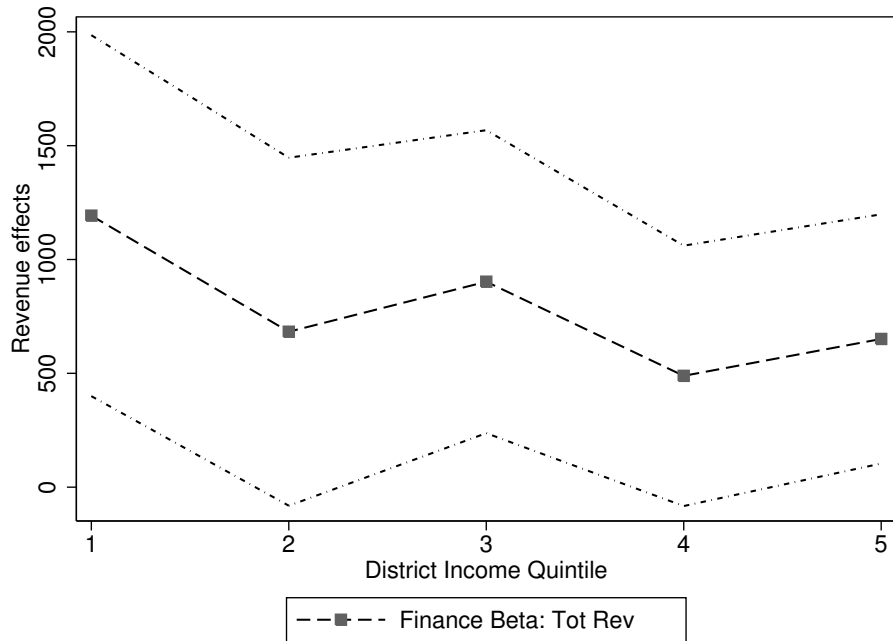
(a) Total revenue slopes



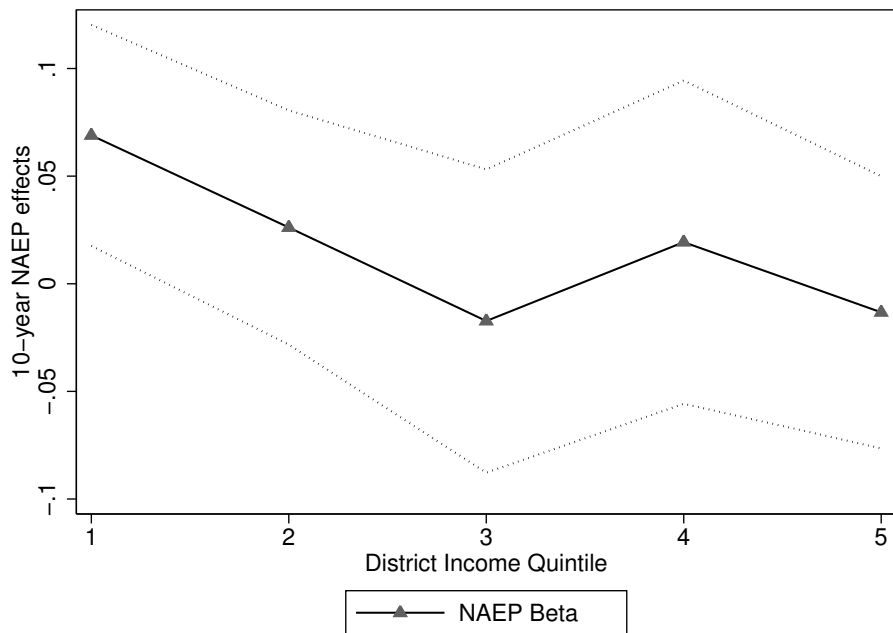
(b) NAEP slopes

Notes: See notes to Figures 2 and 3. This figure repeats those, but uses the slopes of revenues (panel A) or test scores (panel B) with respect to log district mean income in place of the between-quintile gaps.

Figure A3: Event study estimates for total revenues and test scores by district income group



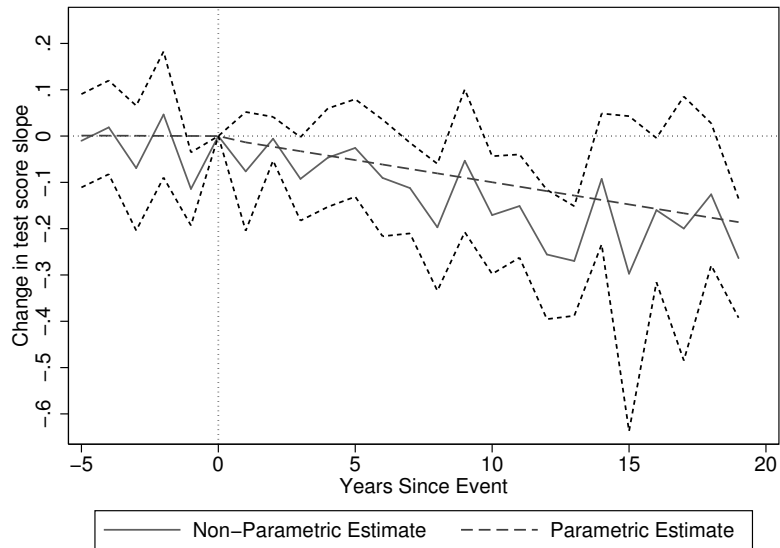
(a) Total revenue



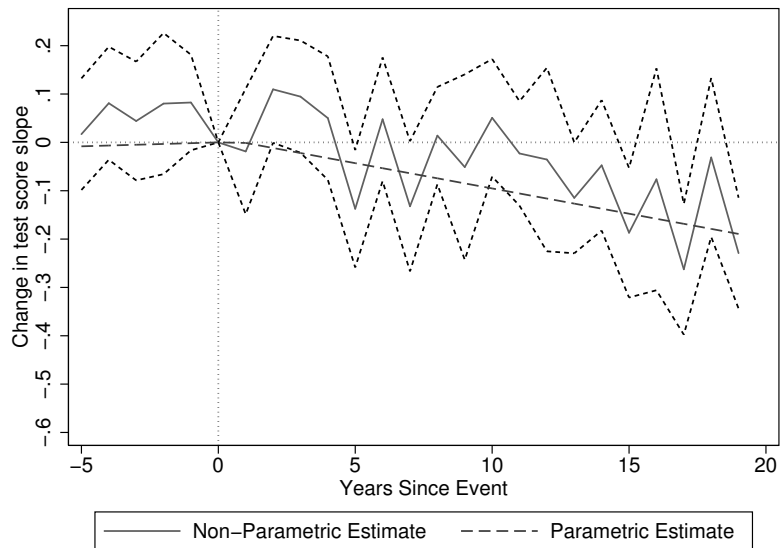
(b) NAEP

Notes: Figure shows event study estimates from one-parameter parametric models for mean revenues and mean test scores in each quintile. Estimates for quintiles 1 and 5 are shown in Table 3, panels B and C, column 3, and Table 6, columns 3 and 4. 95% confidence intervals shown by dotted lines.

Figure A4: Event study estimates of NAEP effects, by grade



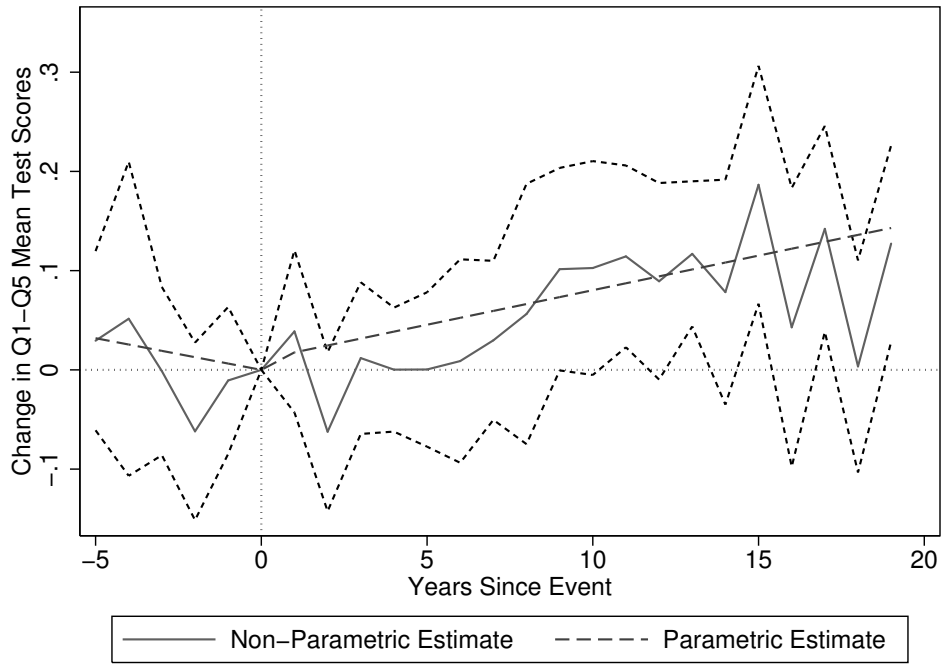
(a) Grade 4



(b) Grade 8

Notes: Figure shows event study estimates for NAEP scores, separately for 4th and 8th grade. Each specification includes state and subject-year fixed effects. p-values for omnibus hypothesis tests of zero pre-event effects in the non-parametric model are 0.05 in Panel A and 0.24 in Panel B; p-values for zero post-event effects are  $<0.001$  in each panel. In the parametric model, the p-value for the hypothesis that the pre-event trend is zero is 0.97 in Panel A and 0.69 in Panel B; for the test that the post-event jump and change in trend is zero it is 0.23 and 0.005, respectively.

Figure A5: Event study estimates of school finance reform effects on the difference in mean test scores between lowest and highest income school districts.



Notes: Figure shows event study estimates for the gap in mean test scores between the bottom (Q1) and top (Q5) quintiles of the state's distribution of district mean household income. p-value for the hypothesis that pre-event effects are zero is 0.64 in the non-parametric model and 0.23 in the parametric model; p-values for zero post-event effects are <0.001 and 0.07, respectively.

## Appendix Tables

**Appendix Table A1**  
**Complete Event List, 1990-2011**

| State       | Year        | Event  | Lafortune,<br>Rothstein &<br>Schanzenbach<br>(2016) | Jackson,<br>Johnson<br>& Persico<br>(2016) | Corcoran<br>& Evans<br>(2015) |
|-------------|-------------|--|---|--|-------------------------------|
| Alabama     | 1993        | Alabama Coalition for Equity (ACE) v. Hunt; Harper v. Hunt                                     |   | X  |                               |
| Alaska      | <b>1999</b> | Kasayulie v. State of Alaska   | Court   | X  |                               |
| Arizona     | 1994        | Roosevelt v. Bishop  | Court   | X  |                               |
|             | 1997        | Hull v. Albrecht   | Court   | X  |                               |
|             | <b>1998</b> | Hull v. Albrecht   | Court   | X  |                               |
|             | 2007        | Flores v. Arizona  |   | X  |                               |
| Arkansas    | 1994        | Lake View v. Arkansas  | Court   | X  |                               |
|             | 1995        | Approved Equitable School Finance Plan (Acts 917, 916, and 1194)                               | Bill  |  | n/a                           |
|             | <b>2002</b> | Lake View v. Huckabee  | Court   | X  | X                             |
|             | 2005        | Lake View v. Huckabee  | Court   | X  | X                             |
|             | 2007        | Various acts resulting from Master's Report findings   | Bill  |  | n/a                           |
| California  | 1998        | Leroy F. Greene School Facilities Act of 1998  | Bill  |  | n/a                           |
|             | <b>2004</b> | Senate Bill 6, Senate Bill 550, Assembly Bill 1550, Assembly Bill 2727, and Assembly Bill 3001 | Bill  |  | n/a                           |
| Colorado    | <b>2000</b> | Bill 181; Various Other Acts   | Bill  |  | n/a                           |
| Connecticut | 1995        | Sheff v. O'Neill   |   | X  |                               |
|             | 2010        | Coalition for justice in Education Funding, Inc. v. Rell                                       |   | X  | n/a                           |
| Idaho       | <b>1993</b> | Idaho Schools for Equal Educational Opportunity v. Evans (ISEEO)                               | Court   |  |                               |
|             | 1994        | Senate Bill 1560   | Bill  |  | n/a                           |
|             | 1998        | Idaho Schools for Equal Educational Opportunity v. State (ISEEO III)                           |   | X  |                               |
|             | 2005        | Idaho Schools for Equal Educational Opportunity v. Evans (ISEEO V)                             | Court   | X  |                               |
| Indiana     | <b>2011</b> | HB 1001 (PI229)  | Bill  |  | n/a                           |

(continued)



**Appendix Table A1 (continued)**

| <b>State</b>  | <b>Year</b> | <b>Event</b>  | <b>LRS (2016)</b> | <b>JJP (2016)</b> | <b>CE (2015)</b> |
|---------------|-------------|---|-------------------|-------------------|------------------|
| Kansas        | 1992        | The School District Finance and Quality Performance Act                                       | Bill              |                   | n/a              |
|               | <b>2005</b> | Montoy v. State; Montoy v. State funding increases  | Both              | X                 | X                |
| Kentucky      | (1989)      | Rose v. Council for Better Education, Inc.  | Court             | X                 | X                |
|               | <b>1990</b> | Kentucky Education Reform Act (HB 940)  | Bill              |                   | n/a              |
| Maryland      | 1996        | Bradford v. Maryland State Board of Education   | Court             |                   |                  |
|               | <b>2002</b> | Bridge to Excellence in Public Schools Act (BTE) (Senate Bill 856)                            | Bill              |                   | n/a              |
|               | 2005        | Bradford v. Maryland State Board of Education   |                   | X                 | (upheld)         |
| Massachusetts | <b>1993</b> | McDuffy v. Secretary of the Executive Office of Education; Massachusetts Education Reform Act | Both              | X                 | X                |
| Michigan      | 1997        | Durant v. State of Michigan   |                   | X                 |                  |
| Missouri      | <b>1993</b> | Committee for Educational Equality v. State of Missouri; Outstanding Schools Act (S.B. 380)   | Both              | X                 |                  |
|               | 2005        | Senate Bill 287   | Bill              |                   | n/a              |
| Montana       | 1993        | House Bill 667  | Bill              | X                 |                  |
|               | <b>2005</b> | Columbia Falls Elementary School v. State   | Court             | X                 | X                |
|               | 2007        | M.C.A. § 20-9-309   | Bill              |                   | n/a              |
|               | 2008        | Montana Quality Education Coalition v. Montana  |                   | X                 | n/a              |
| New Hampshire | 1993        | Claremont New Hampshire v. Gregg  | Court             | X                 |                  |
|               | 1997        | Claremont School District v. Governor   | Court             | X                 | X                |
|               | 1998        | Opinion of the Justices--School Financing (Claremont III)                                     |                   |                   | X                |
|               | 1999        | Claremont v. Governor (Claremont III); RSA chapter 193-E                                      | Both              | X                 | X                |
|               | 2000        | Opinion of the Justices--School Financing (Claremont VI)                                      |                   |                   | X                |
|               | 2002        | Claremont School District v. Governor   | Court             | X                 | X                |
|               | 2006        | Londonderry School District v. New Hampshire  |                   | X                 |                  |
|               | <b>2008</b> | SB 539  | Bill              |                   | n/a              |

(continued)

**Appendix Table A1 (continued)**

| <b>State</b>   | <b>Year</b> | <b>Event</b>   | <b>LRS (2016)</b>             | <b>JJP (2016)</b> | <b>CE (2015)</b> |
|----------------|-------------|--|-------------------------------|-------------------|------------------|
| New Jersey     | 1990        | The Quality Education Act; Abbot v. Burke                          | Both                          | X                 | X                |
|                | 1991        | Abbott v. Burke  |                               | X                 |                  |
|                | 1994        | Abbott v. Burke  | Court                         | X                 | X                |
|                | 1996        | Comprehensive Educational Improvement and Financing Act of 1996    | Bill                          |                   | n/a              |
|                | 1997        | Special Master's Report; Abbott v. Burke                           | Bill                          |                   | X                |
|                | <b>1998</b> | Abbott v. Burke  | Court                         |                   | X                |
|                | 2000        | Abbott v. Burke  | Court                         |                   |                  |
|                | 2008        | The School Funding Reform Act of 2008                              | Bill                          |                   | n/a              |
|                | New Mexico  | 1998   | Zuni School District v. State |                   | X                |
| <b>1999</b>    |             | Zuni School District v. State                                      | Court                         |                   |                  |
| 2001           |             | Deficiencies Corrections Program; Public School Capital Outlay Act | Bill                          |                   | n/a              |
| New York       | 2003        | Campaign for Fiscal Equity, Inc. v. State                          | Court                         | X                 | X                |
|                | <b>2006</b> | Campaign for Fiscal Equity, Inc. v. State                          | Court                         | X                 |                  |
|                | 2007        | Education Budget and Reform Act                                    | Bill                          |                   | n/a              |
| North Carolina | <b>1997</b> | Leandro v. State   | Court                         | X                 |                  |
|                | 2004        | Hoke County Board of Education v. State                            | Court                         | X                 | X                |
| North Dakota   | <b>2007</b> | SB 2200  | Bill                          |                   | n/a              |
| Ohio           | <b>1997</b> | DeRolph v. Ohio  | Court                         | X                 | X                |
|                | 2000        | DeRolph v. Ohio; Increased school funding (see 93 Ohio St.3d 309 ) | Both                          | X                 | X                |
|                | 2001        | DeRolph v. Ohio  |                               |                   | X                |
|                | 2002        | DeRolph v. Ohio  | Court                         | X                 | X                |
| Oregon         | 2009        | Pendleton School District 16R v. State                             |                               | X                 | n/a              |
| South Carolina | 2005        | Abbeville County School District v. State                          |                               | X                 |                  |

(continued)

**Appendix Table A1 (continued)**

| <b>State</b>  | <b>Year</b> | <b>Event</b>  | <b>LRS (2016)</b> | <b>JJP (2016)</b> | <b>CE (2015)</b> |
|---------------|-------------|---|-------------------|-------------------|------------------|
| Tennessee     | 1992        | The Education Improvement Act   | Bill              |                   | n/a              |
|               | 1993        | Tennessee Small School Systems v. McWherter   | Court             | X                 | X                |
|               | <b>1995</b> | Tennessee Small School Systems v. McWherter   | Court             | X                 | X                |
|               | 2002        | Tennessee Small School Systems v. McWherter   | Court             | X                 | X                |
| Texas         | 1991        | Edgewood Independent School District v. Kirby   | Court             | X                 | X                |
|               | <b>1992</b> | Carrollton-Farmers Branch ISD v. Edgewood Independent School District                 | Court             | X                 | X                |
|               | 1993        | Senate Bill 7   | Bill              |                   | n/a              |
|               | 2004        | West Orange-Cove ISD v. Nelson  |                   | X                 |                  |
|               | 2005        | West Orange-Cove Consolidated ISD v. Neeley   |                   |                   | X                |
| Vermont       | 1997        | Brigham v. State  | Court             | X                 | X                |
|               | <b>2003</b> | Revisions to Act 68; H.480  | Bill              |                   | n/a              |
| Washington    | 1991        | Seattle II  |                   | X                 |                  |
|               | 2007        | Federal Way School District v. State  |                   | X                 |                  |
|               | <b>2010</b> | McCleary v. State   | Court             | n/a               | n/a              |
| West Virginia | <b>1995</b> | Tomblin v. Gainer   | Court             | X                 |                  |
| Wyoming       | 1995        | Campbell County School District v. State  | Court             | X                 | X                |
|               | 1997        | The Wyoming Comprehensive Assessment System; The Education Resource Block Grant Model | Bill              |                   | n/a              |
|               | <b>2001</b> | Campbell II; Recalibration of the MAP model   | Bill              | X                 | n/a              |

Notes: Table lists all events included in any of the Lafortune-Rothstein-Schanzenbach (2016); Jackson-Johnson-Persico (2016); or Corcoran-Evans (2015) event lists, from 1990 onward. Xs indicate events that appear in the relevant event list; n/a indicates events that were out of scope for the relevant list, either because they were too recent or because it included only court cases and not legislative events. In Lafortune et al. column, events are classified as "court," "bill," or "both"; rows without an entry are not included in our event database but are included in one of the comparison samples. Bold years indicate the single event per state selected by our algorithm (see text). Appendix D discusses discrepancies between Lafortune et al. and Jackson et al. lists.

Table A2: Event studies for state budgets

|   | Per capita     | Per pupil          |
|---|----------------|--------------------|
| <i>Tax revenues:</i>                                |                |                    |
| Total revenues                                      | 433**<br>(187) | 3,586**<br>(1,762) |
| <i>Expenditures:</i>                                |                |                    |
| Total expenditures                                  | 415**<br>(162) | 3,113**<br>(1,508) |
| Education expenditures                              | 137**<br>(68)  | 1,102*<br>(605)    |
| Intergovernmental transfers                         | 164**<br>(70)  | 1,264**<br>(581)   |
| General expenditures (less education, IG transfers) | 83<br>(105)    | 537<br>(707)       |

Notes: Table shows estimates from the one-parameter event study specification (equation (1)) for state budgetary aggregates. State and year fixed effects are included. Standard errors are clustered at the state level.

Table A3: Comparison to Card-Payne

|                         | State revenues (per capita) |                 |                   | Total revenues (per capita) |                 |                 |
|-------------------------|-----------------------------|-----------------|-------------------|-----------------------------|-----------------|-----------------|
|                         | 1997-1992<br>(CP)           | 1990-2012 (LRS) |                   | 1997-1992<br>(CP)           | 1990-2012 (LRS) |                 |
|                         | Long diff                   | Long diff       | Event study       | Long diff                   | Long diff       | Event study     |
| <i>Court Ruling:</i>    |                             |                 |                   |                             |                 |                 |
| Upheld                  | -0.81<br>(0.67)             |                 |                   | 0.20<br>(0.52)              |                 |                 |
| Unconstitutional        | -1.89***<br>(0.62)          |                 |                   | -1.10**<br>(0.48)           |                 |                 |
| <i>Selected Events:</i> |                             |                 |                   |                             |                 |                 |
| Post Event              |                             | -2.06<br>(2.24) | -2.25**<br>(0.89) |                             | -2.44<br>(4.73) | -1.61<br>(2.38) |

Notes: This table shows results using slopes from a regression of per capita state or total funding on district mean household income (note: district mean income here is in *levels*, not logs). Columns 1 and 4 are from table 4 of Card and Payne (2002) and show the long difference from 1977-1992 in the level-level slope coefficient. In columns 2 and 5, we replicate the Card and Payne specification using data from 1990 and 2012. Columns 3 and 6 show estimated effects from the one parameter event study specification (equation (1)) where level-level per capita slope coefficients are the dependent variables.

Table A4: Comparison to Corcoran-Evans

|  | CE 2015              | CE 2015              |                       | LRS 2016            |                    |
|--|----------------------|----------------------|-----------------------|---------------------|--------------------|
|  | Overturn             | Overturn             | Overturn*<br>Adequacy | Selected            | First<br>Court     |
| <i>Per-pupil expenditure inequality:</i> |                      |                      |                       |                     |                    |
| Coefficient of variation                 | -0.029***<br>(0.010) | -0.044***<br>(0.014) | 0.028**<br>(0.014)    | 0.010<br>(0.011)    | -0.001<br>(0.008)  |
| <i>Per-pupil expenditures:</i>           |                      |                      |                       |                     |                    |
| log(Mean)                                | 0.092***<br>(0.025)  | 0.056<br>(0.037)     | 0.068<br>(0.049)      | 0.056***<br>(0.021) | 0.044**<br>(0.018) |
| <i>Per-pupil revenues, by source:</i>    |                      |                      |                       |                     |                    |
| Total revenues                           | 701***<br>(256)      | 478<br>(360)         | 416<br>(445)          | 829***<br>(302)     | 759***<br>(264)    |
| State revenues                           | 786***<br>(202)      | 489**<br>(199)       | 556**<br>(271)        | 912**<br>(359)      | 998**<br>(454)     |
| Local revenues                           | -91<br>(266)         | -31<br>(404)         | -112<br>(452)         | -146<br>(307)       | -351<br>(372)      |

Notes: Columns 1-3 are from Table 19.3 of Corcoran and Evans (2015). In Columns 2 and 3, coefficients in each row come from a single regression, where column 2 represents the impact of a court ruling overturning the existing school finance system and column 3 represents the additional impact of an adequacy ruling relative to an equity ruling. Columns 4-5 repeat the analysis, using our sample and an approximation to the Corcoran and Evans specification.

Table A5: Event study for log income, race, free lunch

## (a) Income gradients

|                                  | Log mean income     |                     | Minority share      |                     | Free lunch share   |                     |
|----------------------------------|---------------------|---------------------|---------------------|---------------------|--------------------|---------------------|
|                                  | (1)                 | (2)                 | (3)                 | (4)                 | (5)                | (6)                 |
| Post Event * Yrs Elapsed         | -0.0010<br>(0.0029) | 0.0008<br>(0.0040)  | 0.0022*<br>(0.0013) | 0.0018<br>(0.0015)  | 0.0062<br>(0.0064) | 0.0091<br>(0.0071)  |
| Trend                            |                     | -0.0026<br>(0.0042) |                     | 0.0008<br>(0.0008)  |                    | -0.0022<br>(0.0030) |
| Post Event                       |                     | 0.0193<br>(0.0368)  |                     | -0.0044<br>(0.0051) |                    | -0.0227<br>(0.0291) |
| Observations                     | 147                 | 147                 | 1045                | 1045                | 958                | 958                 |
| p(post-event=post-event*trend=0) | 0.72                | 0.87                | 0.09                | 0.49                | 0.34               | 0.39                |
| State FEs                        | X                   | X                   | X                   | X                   | X                  | X                   |
| Yr FEs                           | X                   | X                   | X                   | X                   | X                  | X                   |

## (b) Q1-Q5 difference

|                                  | Log mean income     |                     | Minority share      |                     | Free lunch share     |                       |
|----------------------------------|---------------------|---------------------|---------------------|---------------------|----------------------|-----------------------|
|                                  | (1)                 | (2)                 | (3)                 | (4)                 | (5)                  | (6)                   |
| Post Event * Yrs Elapsed         | -0.0017<br>(0.0029) | -0.0008<br>(0.0035) | -0.0015<br>(0.0017) | -0.0017<br>(0.0020) | -0.0036*<br>(0.0019) | -0.0052**<br>(0.0024) |
| Trend                            |                     | -0.0004<br>(0.0035) |                     | 0.0003<br>(0.0016)  |                      | 0.0018<br>(0.0021)    |
| Post Event                       |                     | -0.0073<br>(0.0290) |                     | -0.0005<br>(0.0081) |                      | -0.0048<br>(0.0157)   |
| Observations                     | 145                 | 145                 | 1045                | 1045                | 962                  | 962                   |
| p(post-event=post-event*trend=0) | 0.55                | 0.95                | 0.40                | 0.66                | 0.06                 | 0.06                  |
| State FEs                        | X                   | X                   | X                   | X                   | X                    | X                     |
| Yr FEs                           | X                   | X                   | X                   | X                   | X                    | X                     |

Notes: Table presents event study specifications where the dependent variable is the slope of the indicated demographic characteristic with respect to the district's 1990 log mean household income (panel A) or the gap between the average for districts in the bottom and top quintiles of the 1990 income distribution (panel B). Minority share and free lunch share are available annually from the Common Core of Data (though missing in some states and some years); log mean income is available from the Census in 1990 and 2000 and from the American Community Survey in 2007-11 (coded as 2011).

Table A6: Stratification of race, FRL, &amp; achievement, by quintile

|                           | Q1   | Q2   | Q3   | Q4   | Q5   |
|---------------------------|------|------|------|------|------|
| Black                     | 0.24 | 0.24 | 0.24 | 0.17 | 0.11 |
| Black/Hispanic            | 0.25 | 0.23 | 0.24 | 0.18 | 0.11 |
| White                     | 0.20 | 0.20 | 0.18 | 0.20 | 0.22 |
| Free/reduced-price lunch  | 0.32 | 0.23 | 0.20 | 0.15 | 0.10 |
| 25th pctl or below (NAEP) | 0.27 | 0.21 | 0.22 | 0.17 | 0.13 |
| 75th pctl or above (NAEP) | 0.14 | 0.15 | 0.17 | 0.22 | 0.32 |

Note: Table shows fraction of students of various groups in districts in various quintiles of the state's district income distribution. Each row sums to 1. Racial and free lunch shares are computed using CCD district-level data for the year 1994. The distribution of high- and low-achieving students is based on the 2003 NAEP data, which is the first year of comprehensive data for all grades and subjects.

Table A7: Event studies for district-mean resource gaps by race, FRL, &amp; achievement

|               | Black/White  |              | Free Lunch |             | 25th/75th Pctl (NAEP) |               |
|---------------|--------------|--------------|------------|-------------|-----------------------|---------------|
|               | St. Rev      | Tot. Rev     | St. Rev    | Tot. Rev    | St. Rev               | Tot. Rev      |
| Post Event    | 197<br>(160) | 195<br>(164) | 2<br>(185) | 23<br>(195) | 143<br>(141)          | 193*<br>(101) |
| Observations  | 1047         | 1047         | 938        | 938         | 1509                  | 1509          |
| State FEs     | X            | X            | X          | X           | X                     | X             |
| Yr FEs        | X            | X            | X          | X           |                       |               |
| Sub-gr-yr FEs |              |              |            |             | X                     | X             |

Note: In columns 1 and 2, the dependent variable in event study specifications is the average per-pupil revenue in the district attended by the average black student, less that in the district attended by the average white student in the same state. In columns 3 and 4, analogous revenue gaps are constructed for free/reduced-price lunch and non-free/reduced-price lunch students. In columns 5 and 6, analogous revenue gaps are constructed for students scoring at or below the 25th percentile in the NAEP, and students scoring at or above the 75th percentile in the NAEP. The *Post Event* coefficient shows the estimated event effect from parametric event study model without controlling for prior trends. State and year fixed effects are included in columns 1-4. State and grade-subject-year fixed effects are included in columns 5 and 6. Standard errors are clustered at the state level.