

CWED Series on MW Evaluations: Local Minimum Wage Policies Evidence from Six Cities

Allegretto, Godoey, Nadler & Reich

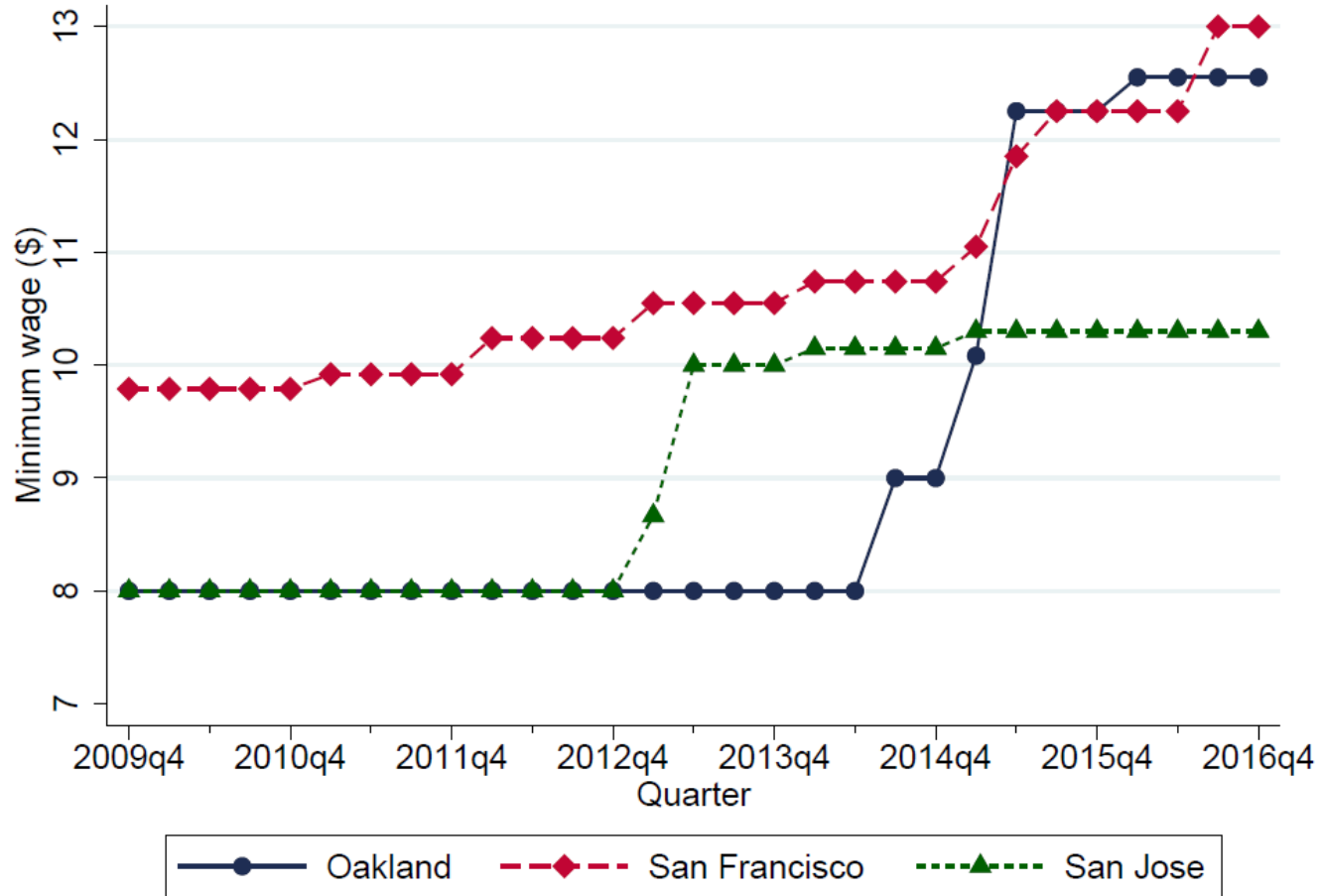
CWEDs 10th Anniversary!!!

December 8, 2017
Berkeley, CA

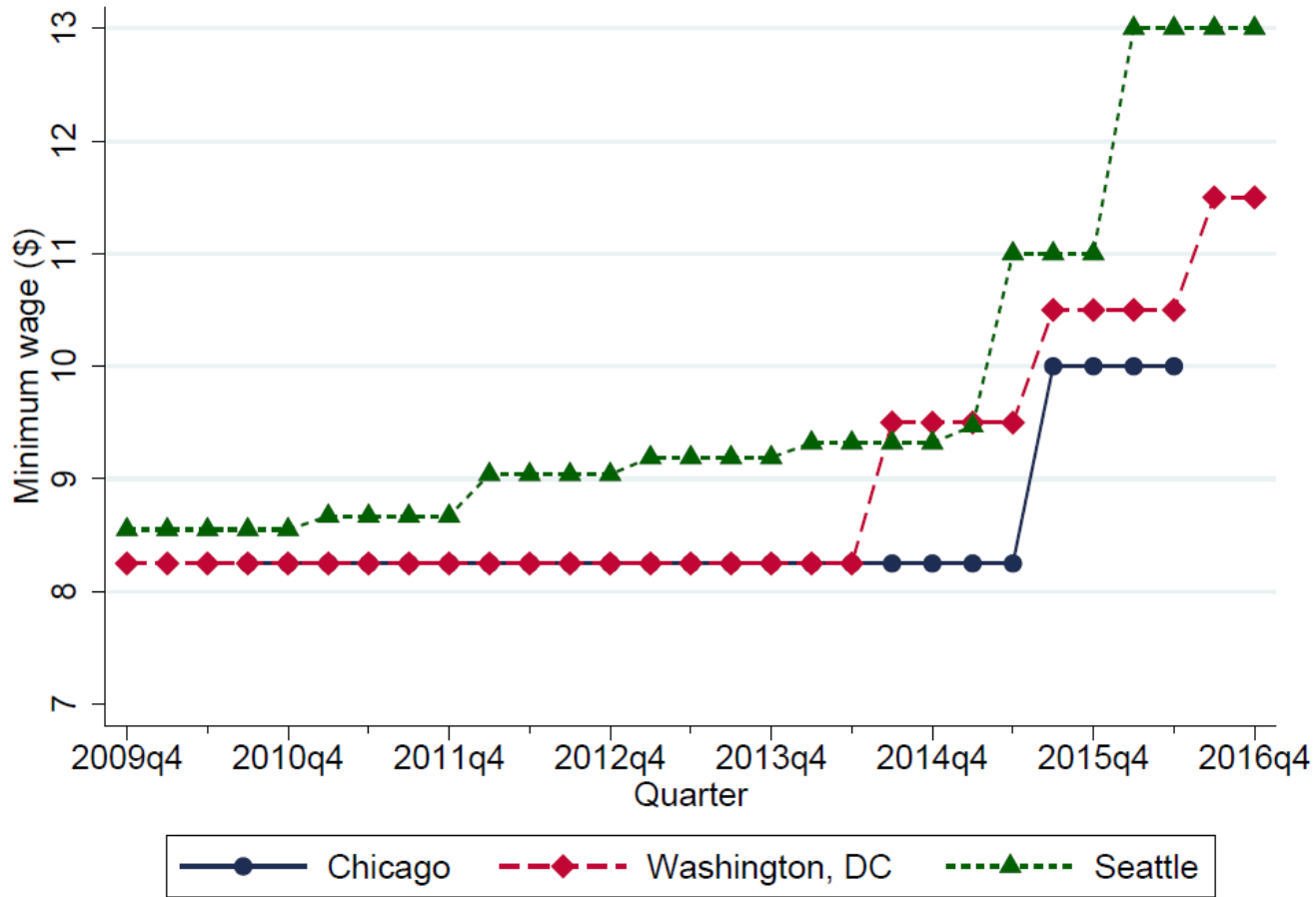
Sylvia A. Allegretto, PhD
Co-Chair, Center on Wage & Employment Dynamics
Institute for Research on Labor & Employment
University of California, Berkeley



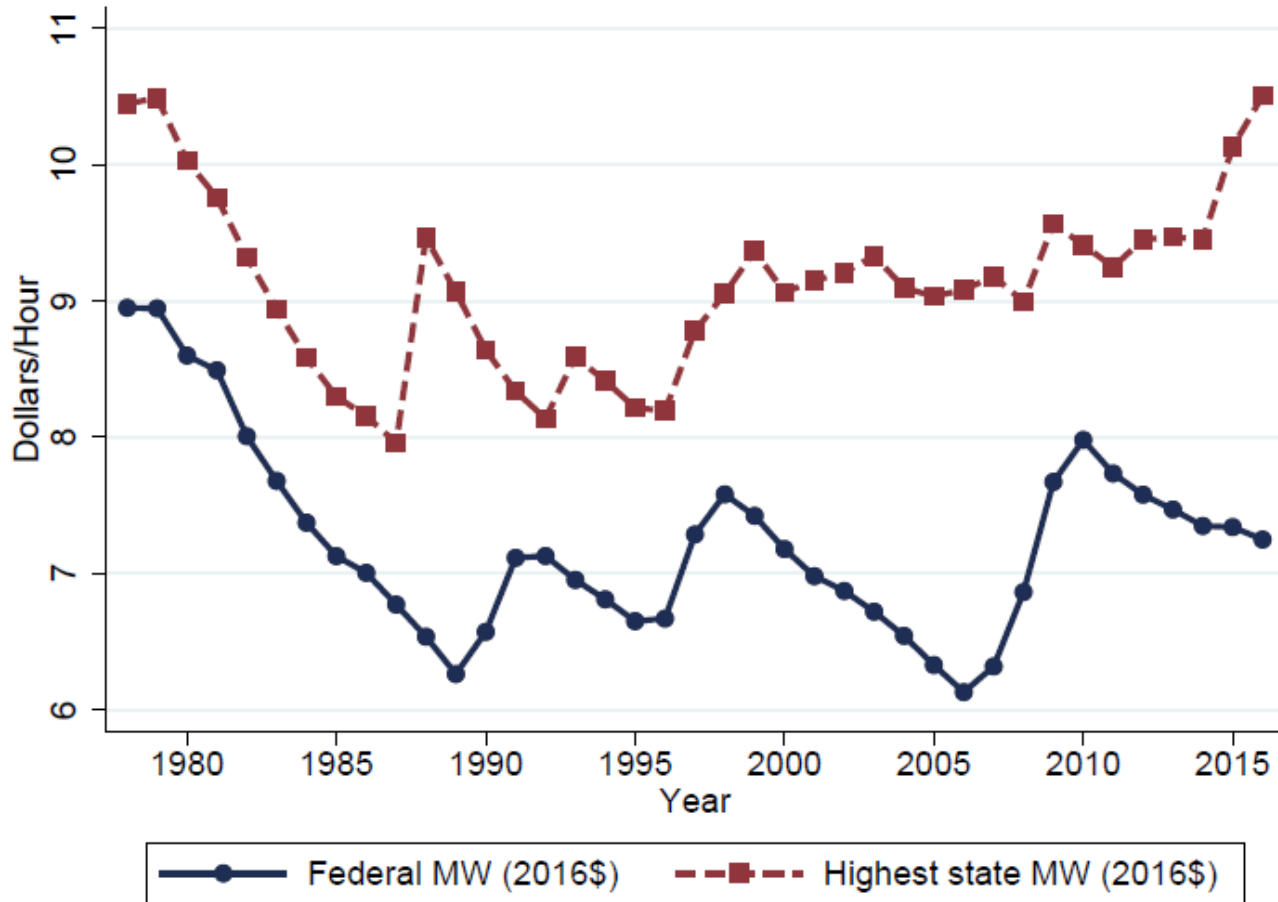
Three CA cities



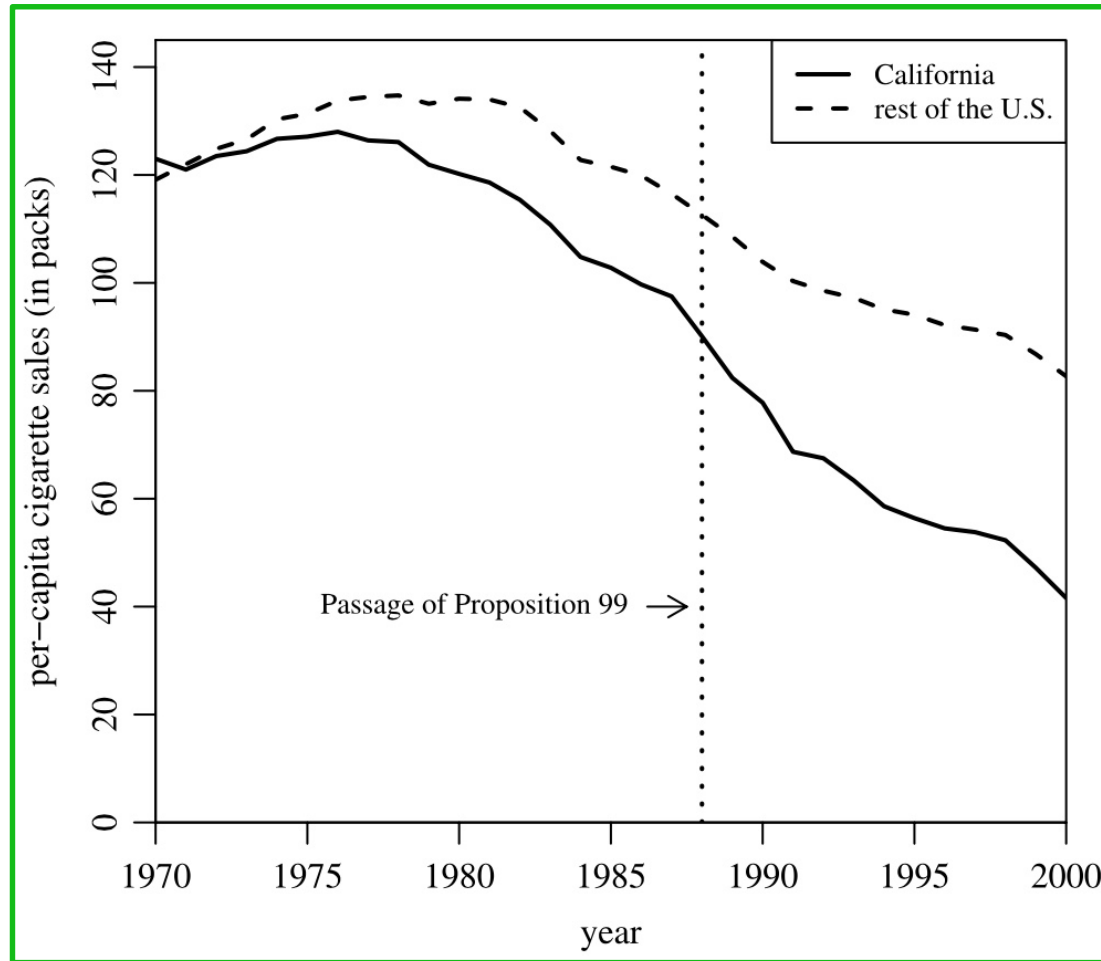
Three other cities



Historically, recent local MWs are higher

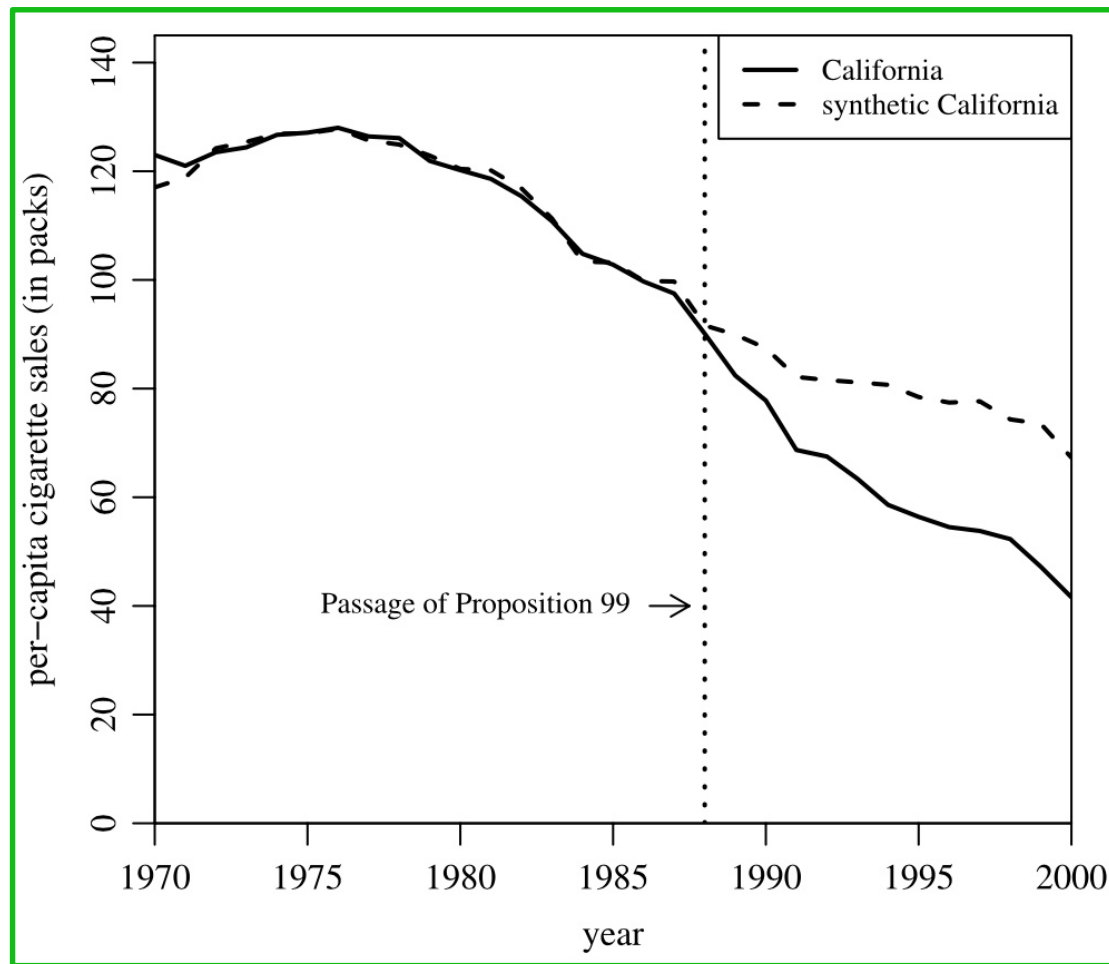


Synthetic control example: CA tobacco tax and cigarette consumption



Source: Abadie, Diamond, and Hainmueller 2010.

Synth-CA as a weighted average of other states: pre-period match, post-period effect



Source: Abadie, Diamond, and Hainmueller 2010.

Policy & donor pool selection

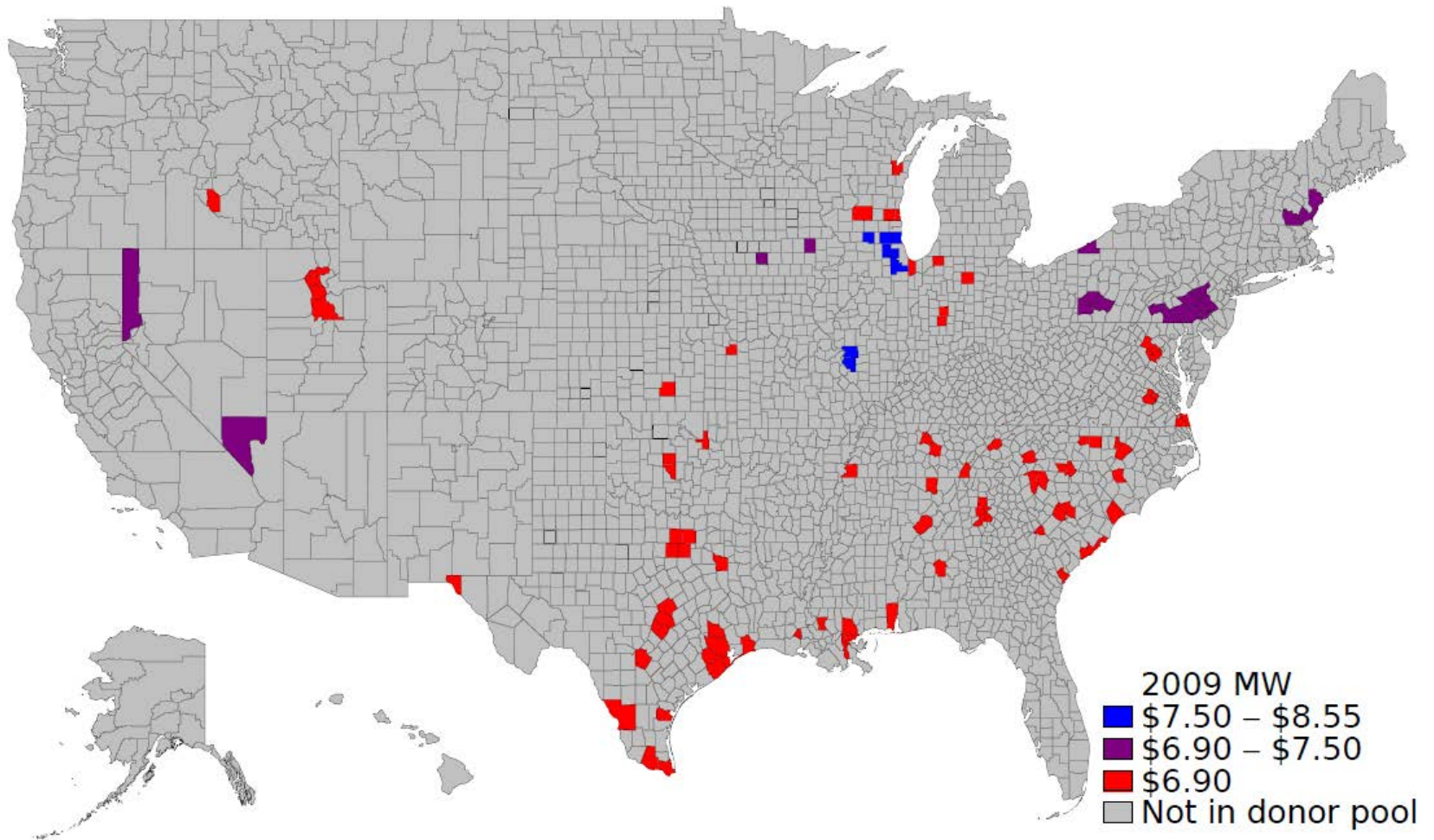
City	Pre-period	Evaluation period	MW growth	Donor pool
Chicago	2010q3--2015q2	2015q3--2016q2	19.2%	No increases
Oakland	2009q4--2014q2	2015q2--2016q3	43.8%	No increases
San Jose	2009q4--2012q4	2013q2--2014q3	23.1%	No increases
Wash. DC	2009q4--2014q2	2014q3--2016q4	21.9%	No increases
San Francisco	2009q4--2015q1	2015q2--2016q4	11.4%	Indexed to inflation
Seattle	2009q4--2015q1	2015q2--2016q4	24.1%	Indexed to inflation

We use QCEW county data on earnings & employment by industry

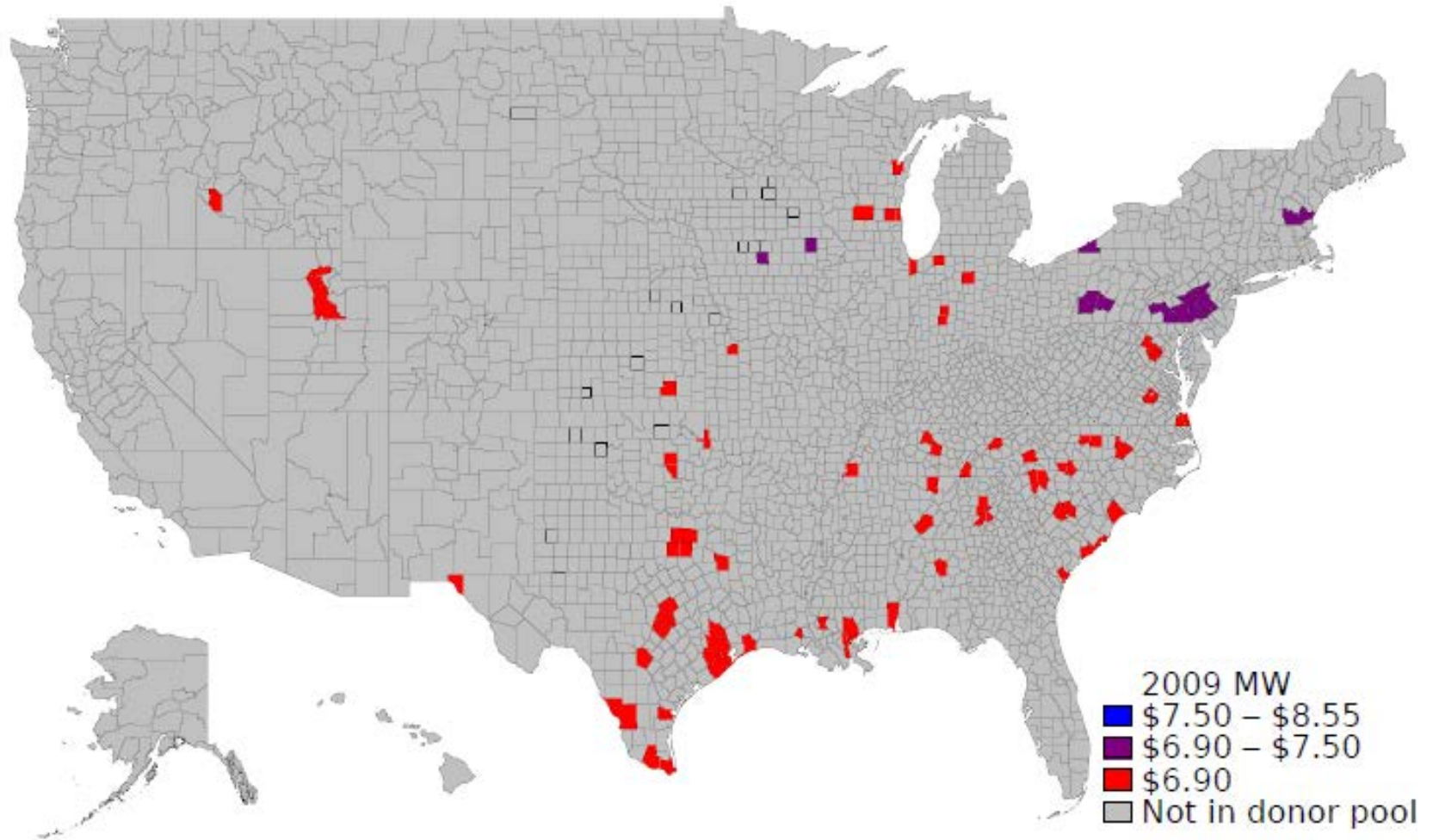
We restrict our donor pool to counties:

- In a metropolitan area with at least 200k population
- “Clean” - meaning no state or local MW policy
- Similar MW - no changes or indexation

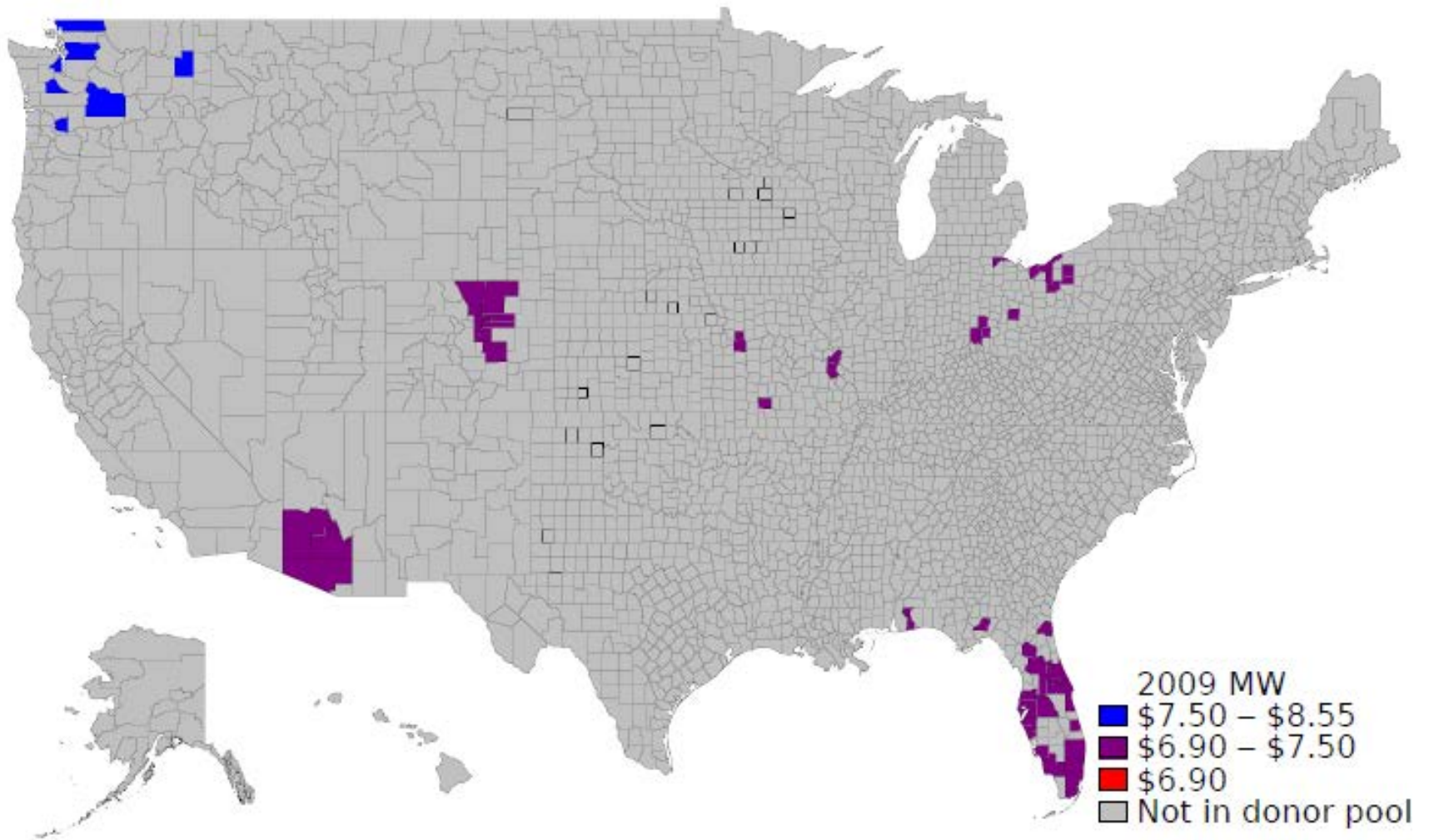
Chicago donor pool



Oakland, SJ & DC donor pool

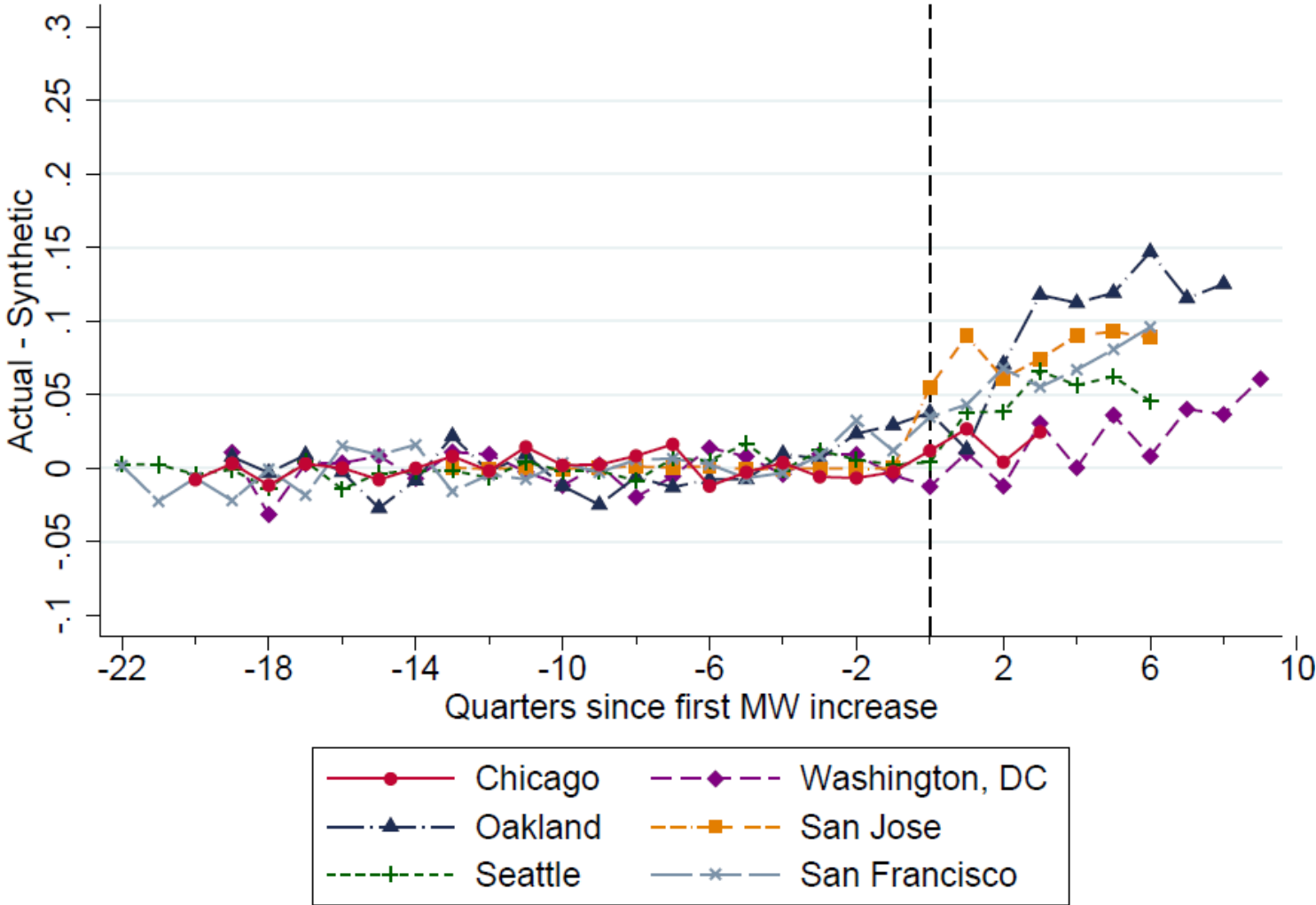


San Francisco & Seattle donor pool



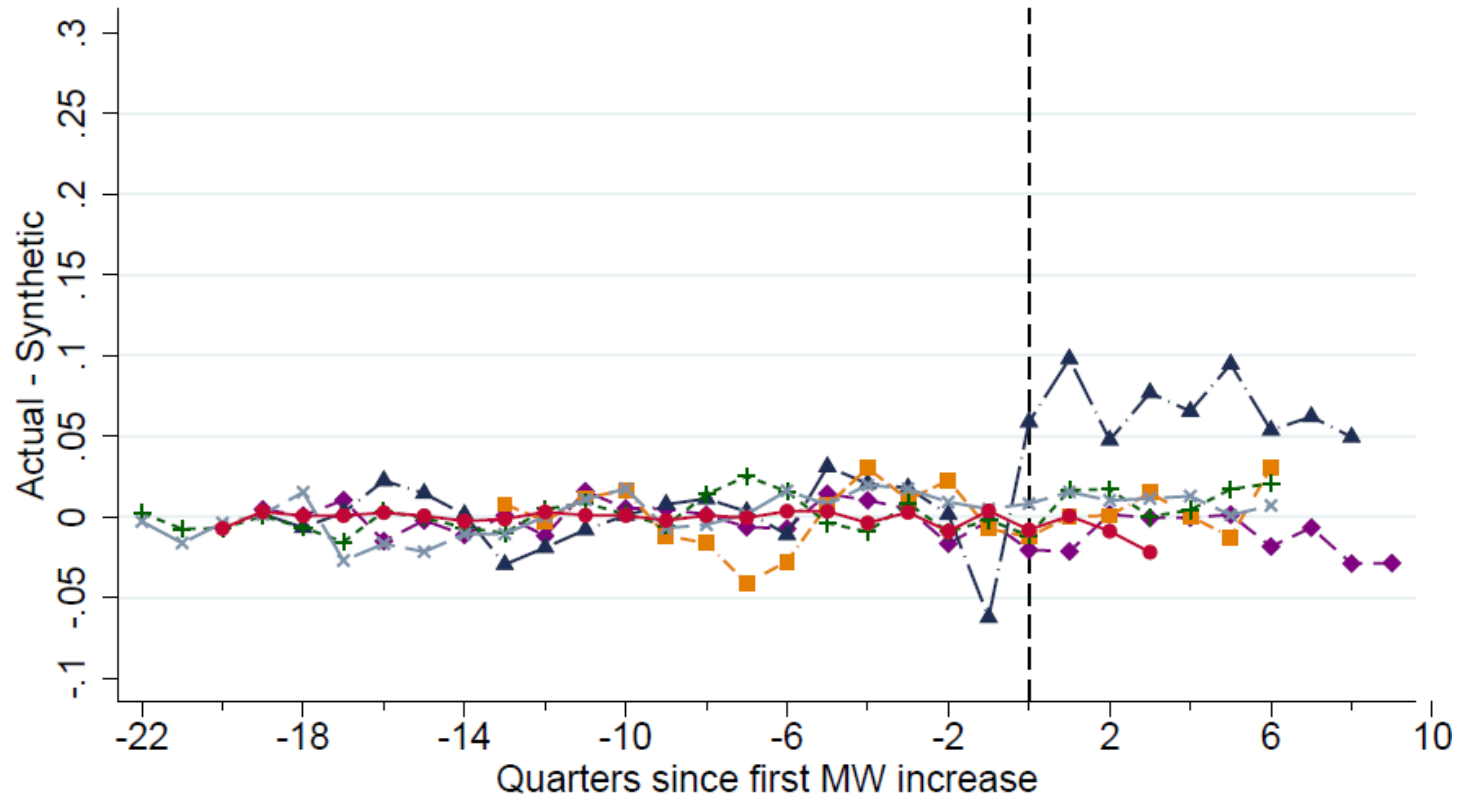
Earnings effects: food svc & drinking places

Preliminary results do not cite



Employment effects: food svc & drinking places

Preliminary results do not cite



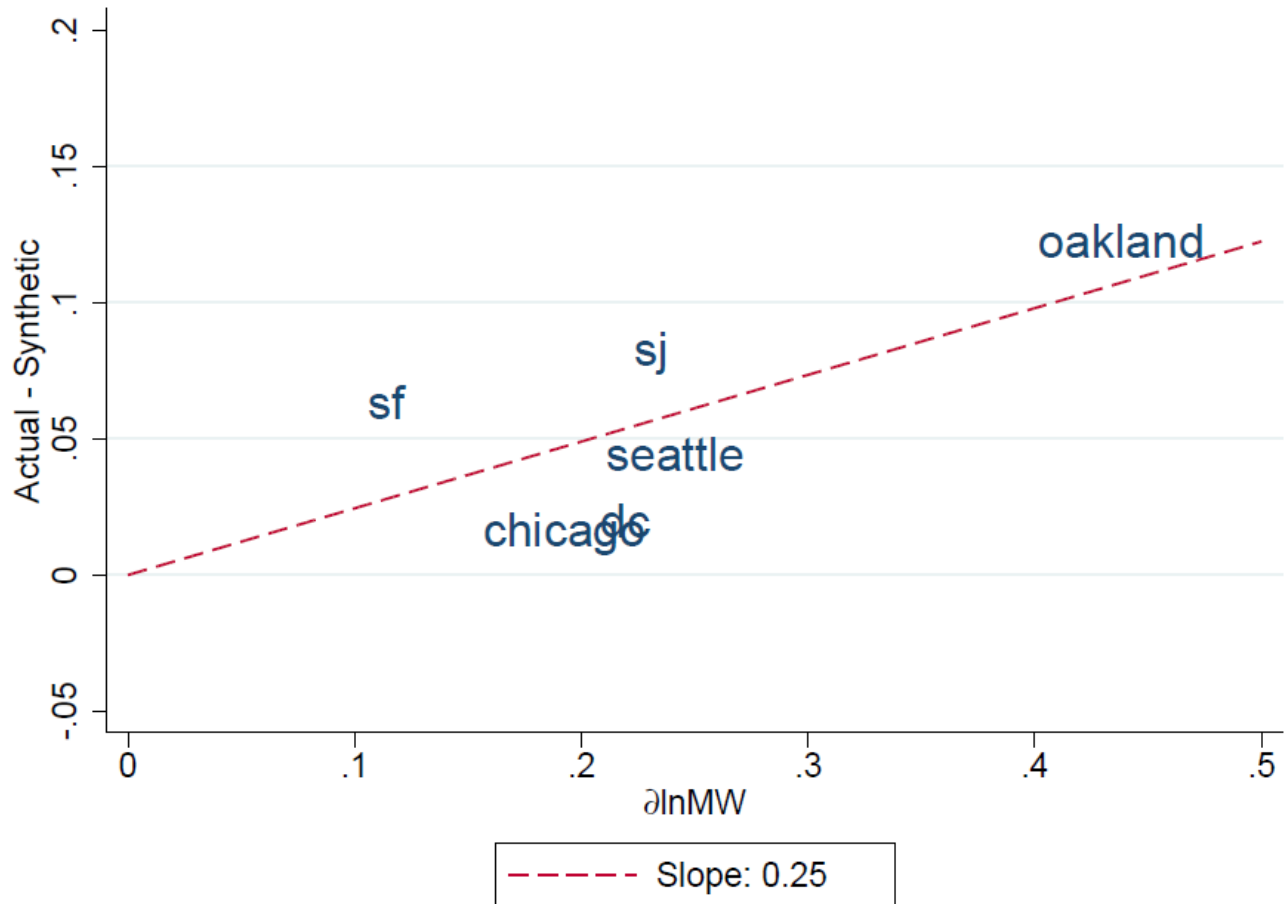
Food Service and Drinking Places

	Chicago	Oakland	San Jose	Seattle	San Francisco	Washington DC
		Earnings				
Effect	0.02	0.12	0.08	0.04	0.06	0.02
P-value	0.45	0.14	0.04	0.02	0.03	0.52
95% CI	[-0.03,0.07]	[-0.30,0.55]	[0.03,0.13]	[0.02,0.07]	[0.01,0.12]	[-0.18,0.22]
Mean effect, donor pool	0.00	0.00	0.00	0.00	0.00	0.00
		Employment				
Effect	-0.01	0.07	0.01	0.01	0.01	-0.01
P-value	0.30	0.50	1.00	0.77	0.97	0.75
95% CI	[-0.04,0.02]	$[-\infty, \infty]$	$[-\infty, \infty]$	[-0.06,0.07]	[-0.08,0.10]	[-0.21,0.19]
Mean effect, donor pool	0.00	0.00	0.00	0.00	0.00	0.00
Donor pool size	113	99	99	60	60	99
Pre-increase periods	20	19	13	22	22	19

Preliminary results do not cite

Pooled analysis for earnings effects - lie along a regression line

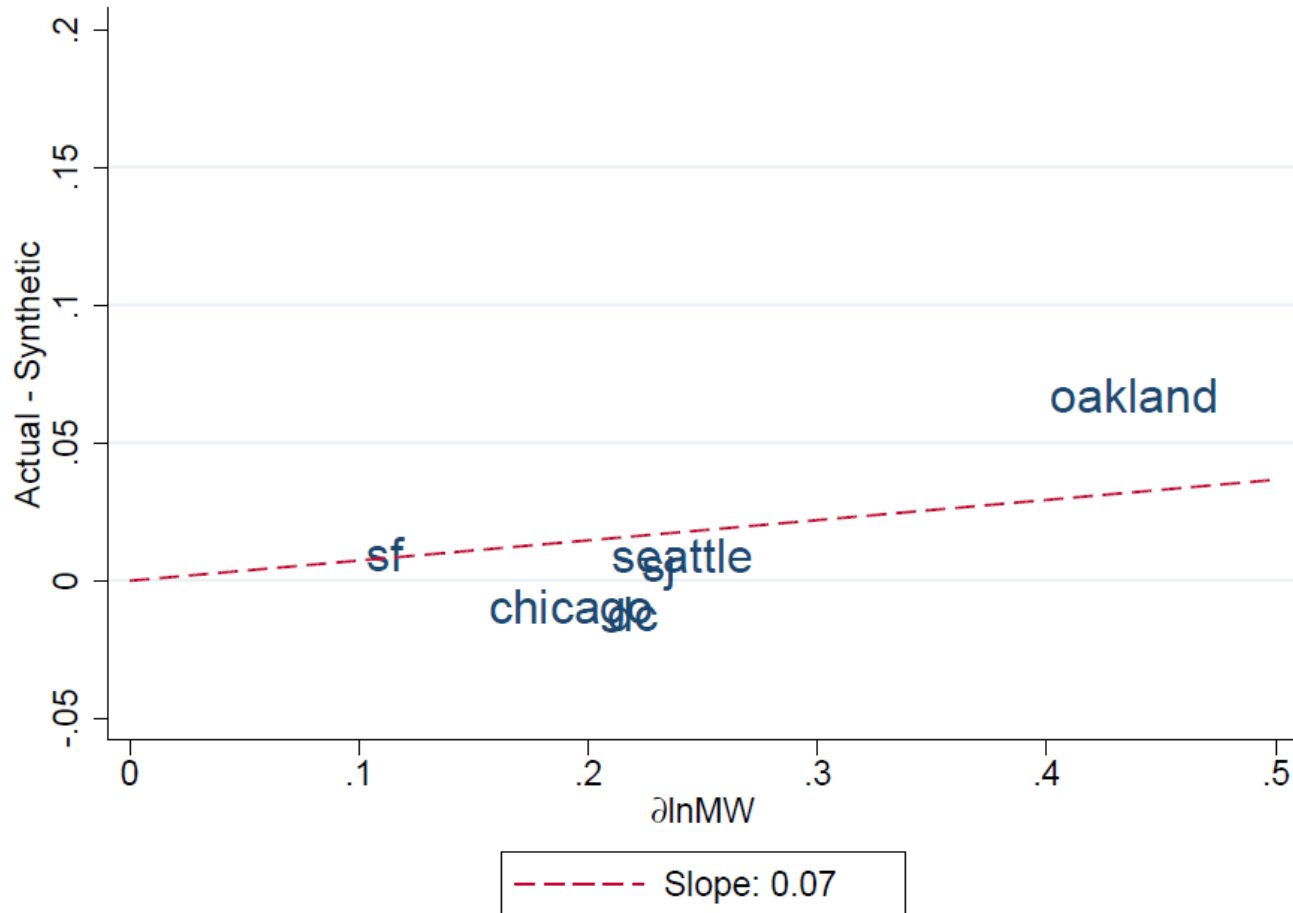
Preliminary results do not cite



Confidence interval [0.10,0.40]

Pooled analysis for employment effects do not exhibit this pattern

Preliminary results do not cite



Confidence interval [-0.21, 0.36]

More work to be done

- **Perform pooled difference-in-differences analysis**
 - Robustness checks
 - Covariates may help, vary w/time effects
- **Synthetic Control to do list**
 - Include more sectoral analyses
 - Retail trade, food & beverage, nursing home workers
 - Falsification tests on higher paying sectors
 - Professional and Technical Services
 - Relax donor pool restrictions

Stay tuned as our 6 city brief will be out in early 2018 and downstream effects analyses will follow

Thank you!

Sylvia A. Allegretto, PhD

allegretto@berkeley.edu

Co-Chair, Center on Wage & Employment Dynamics

Institute for Research on Labor & Employment

University of California, Berkeley

